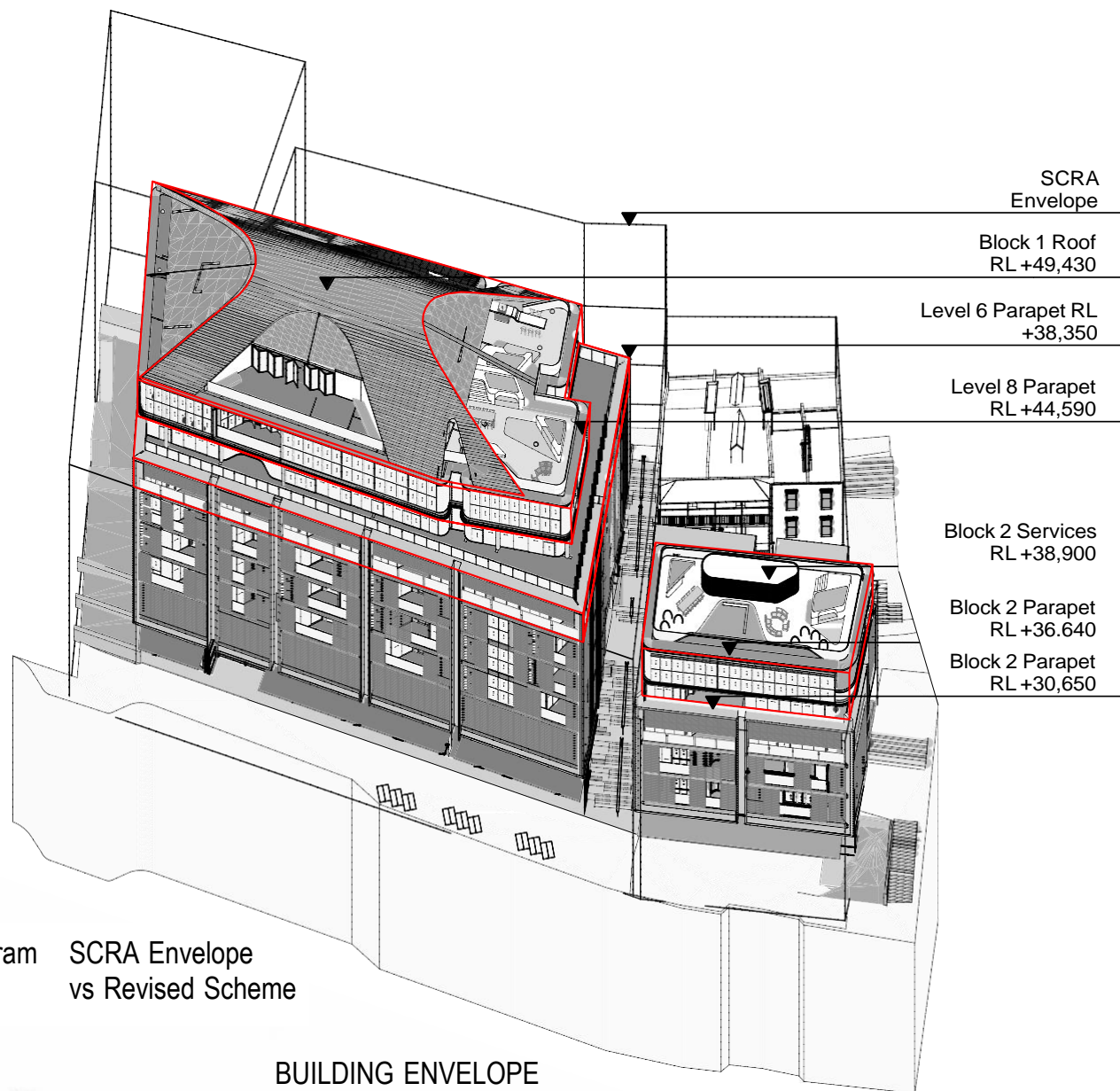
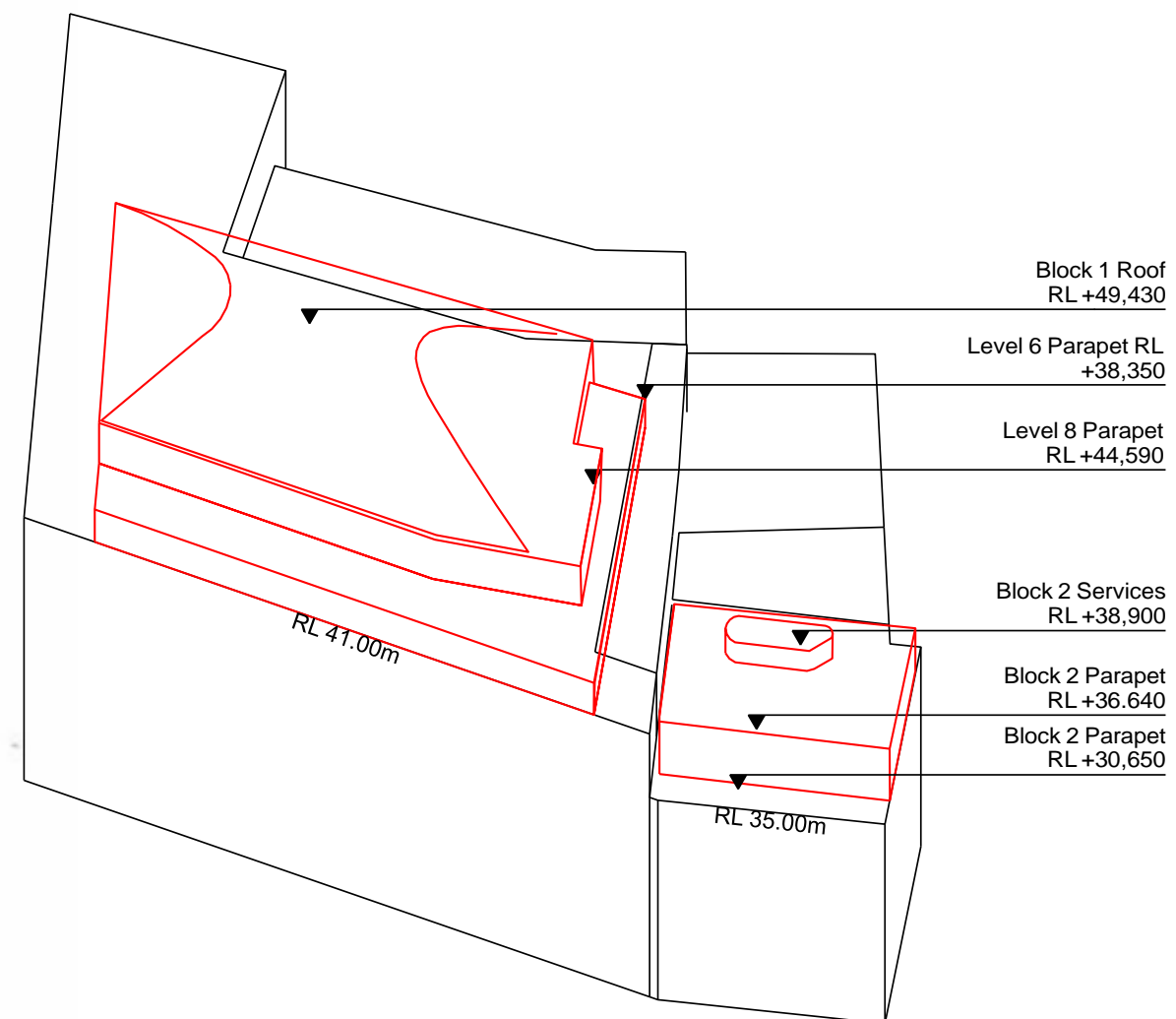
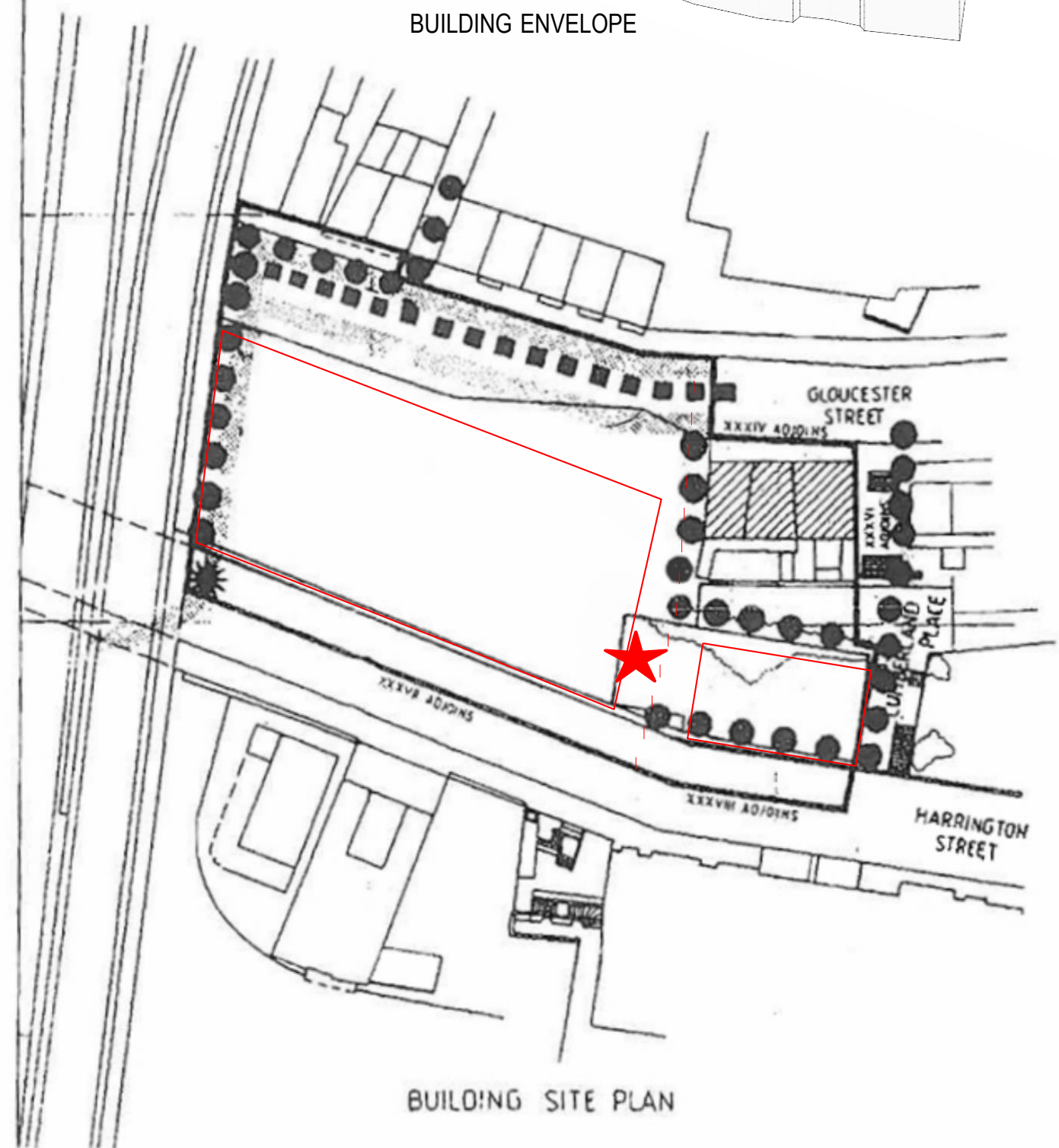


4 Diagram SCRA Envelope vs Revised Scheme

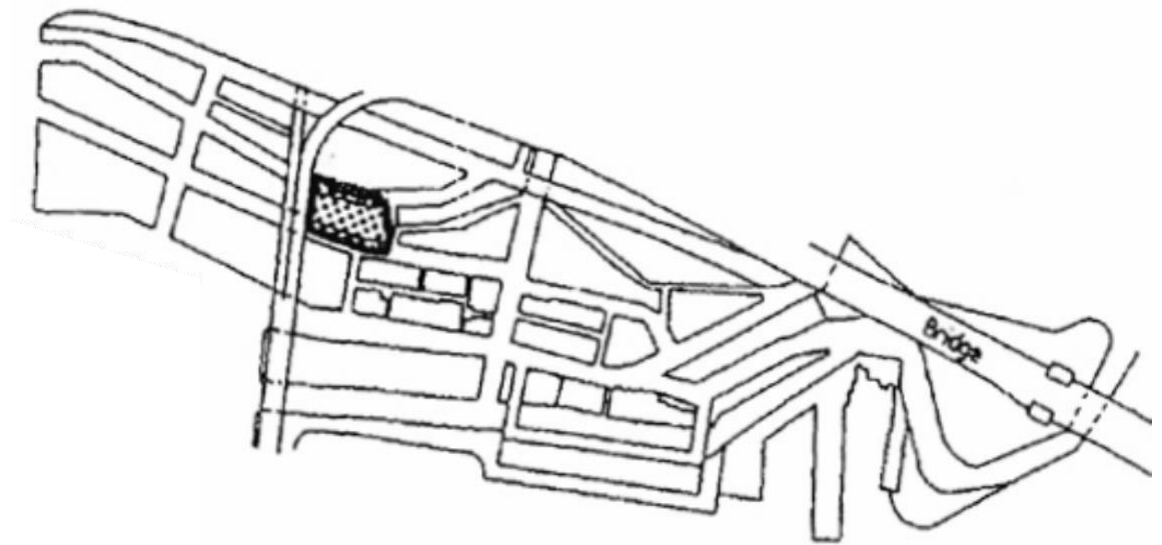


BUILDING ENVELOPE



BUILDING ENVELOPE

AXONOMETRIC DRAWING



This drawing refers to the land shaded

LEGEND

SITE BOUNDARY

EASEMENT

HISTORIC BUILDINGS

PEDESTRIAN ROUTE

VEHICLE ROUTE

PERMITTED USES

COMMERCIAL

RESIDENTIAL

SPECIAL

PUBLIC LIFT
TO MAXIMUM OF
SCRA RL 34.0

NEW PEDESTRIAN LINK

NEW PUBLIC ELEVATOR

We, the Planning Assessment Commission as delegate of the Minister for Planning, under delegation dated 28 February 2016, pursuant to clause 9 of the *Environmental Planning and Assessment (Sydney Cove) Savings and Transitional Regulation 1999*, under the *Environmental Planning and Assessment Act 1979*, approve the variation to the Prescribed Scheme, described by the Control Drawing.

Planning Assessment Commission

S. O'Connor

Lynette Ziegler

Date 12.1.2018

The general controls as shown on the drawing are subject to refinement of detail in relation to dimensions, easements, useages, open spaces and means of circulation and the sites shall be subject to such further conditions in relation to architectural details, financial considerations, staging and timing and system of approvals as the Authority may deem necessary and make known prior to the sites being offered for development.

BUILDING SITE CONTROL DRAWING XXXV-A
30 METRES

SYDNEY HARBOUR FORESHORE AUTHORITY

Generated by

AUGUST 2007