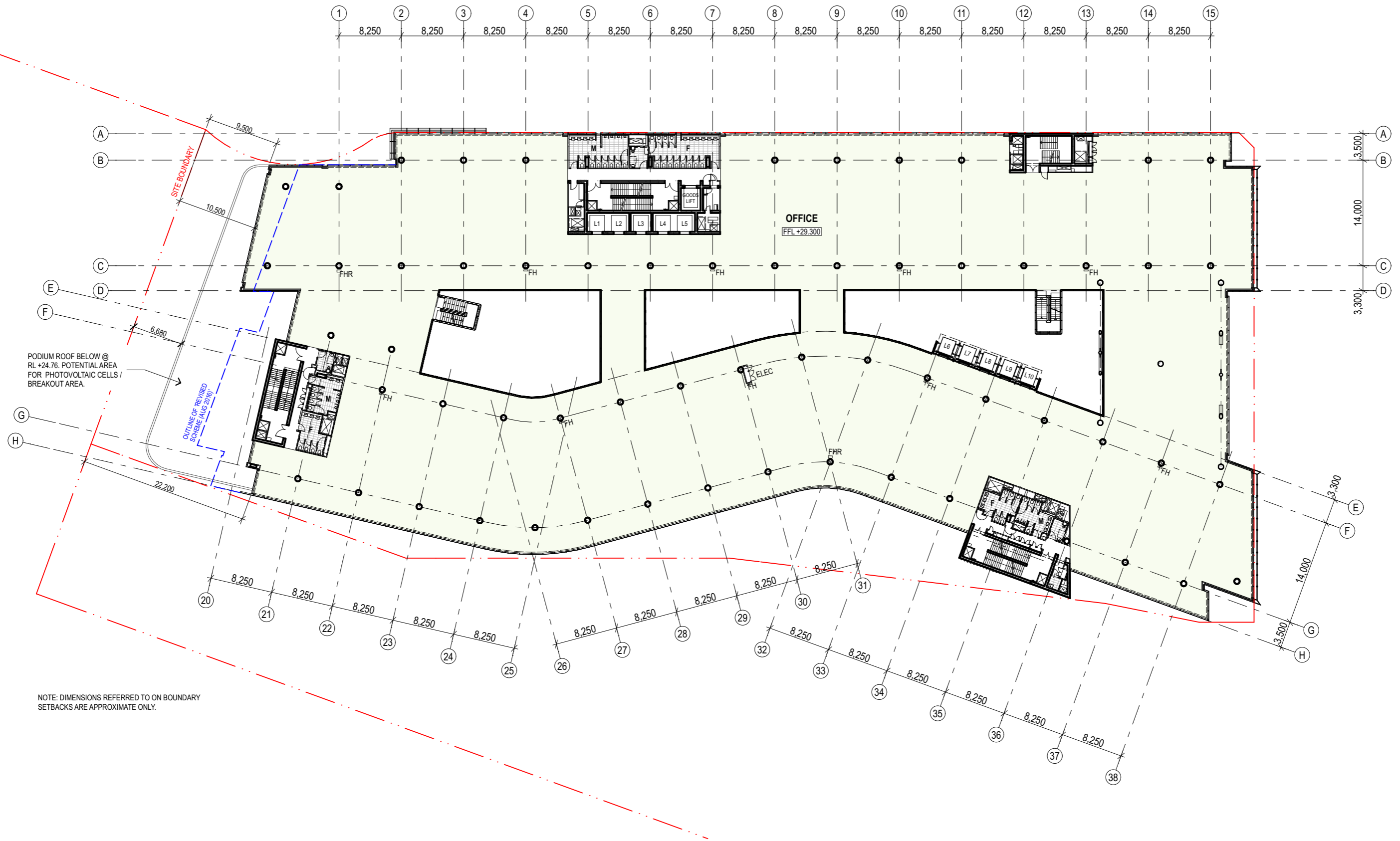
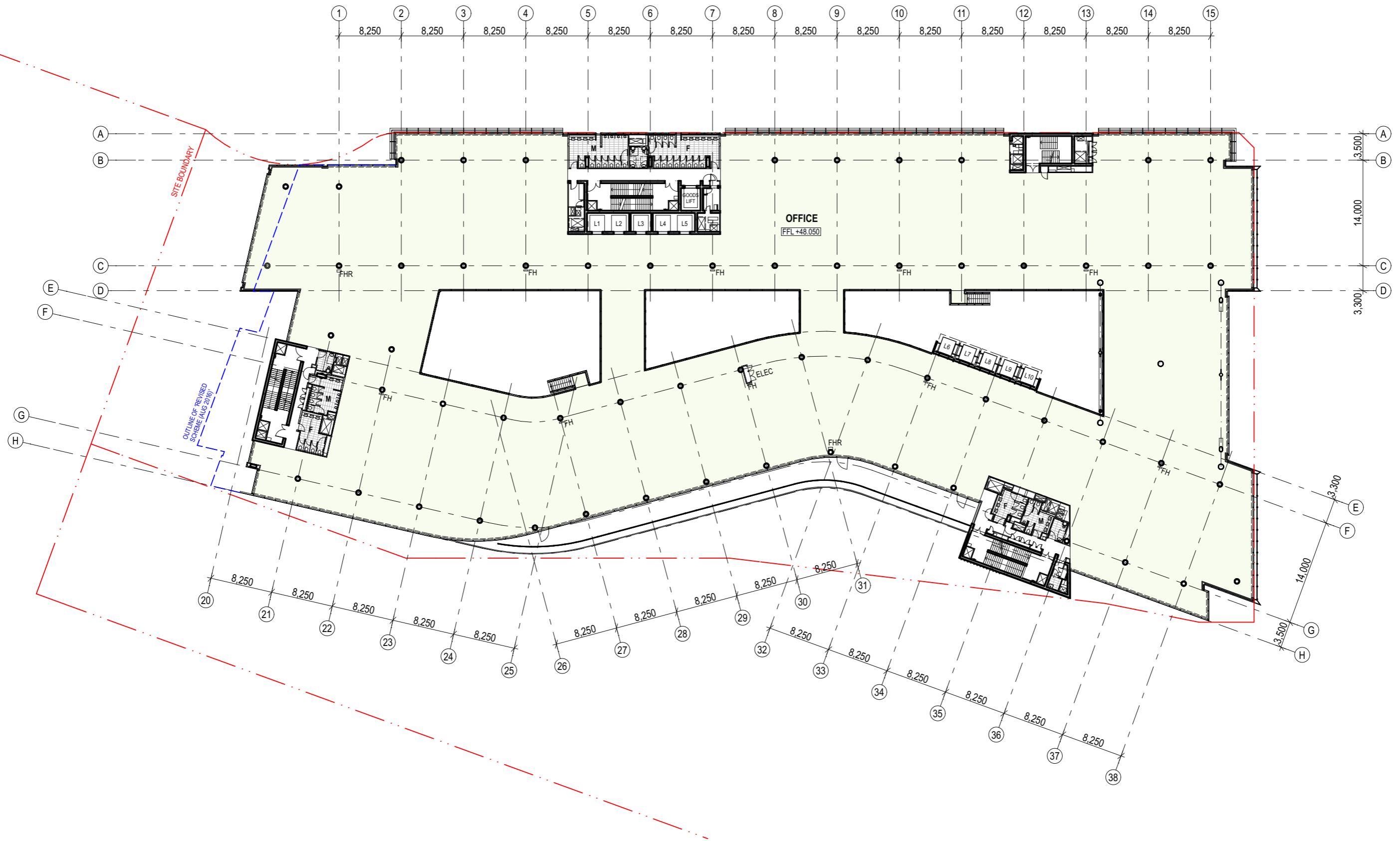
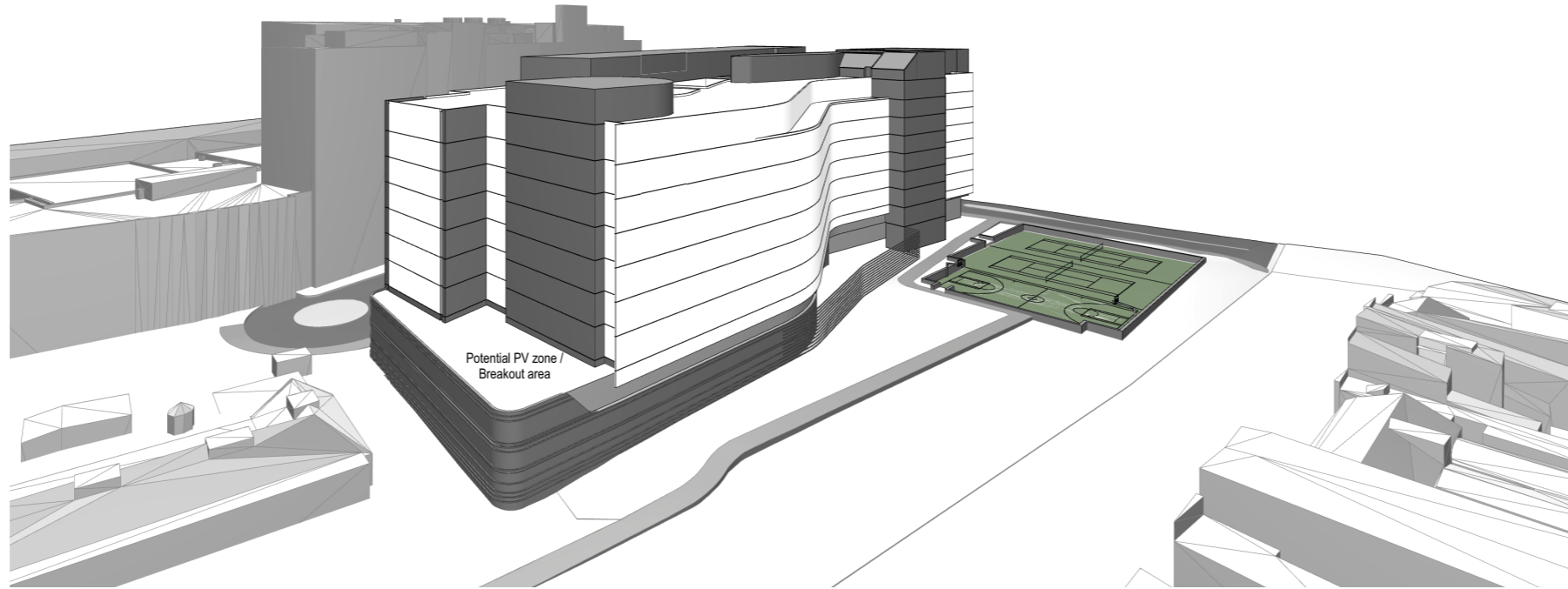


NOTE: DIMENSIONS REFERRED TO ON BOUNDARY SETBACKS ARE APPROXIMATE ONLY.

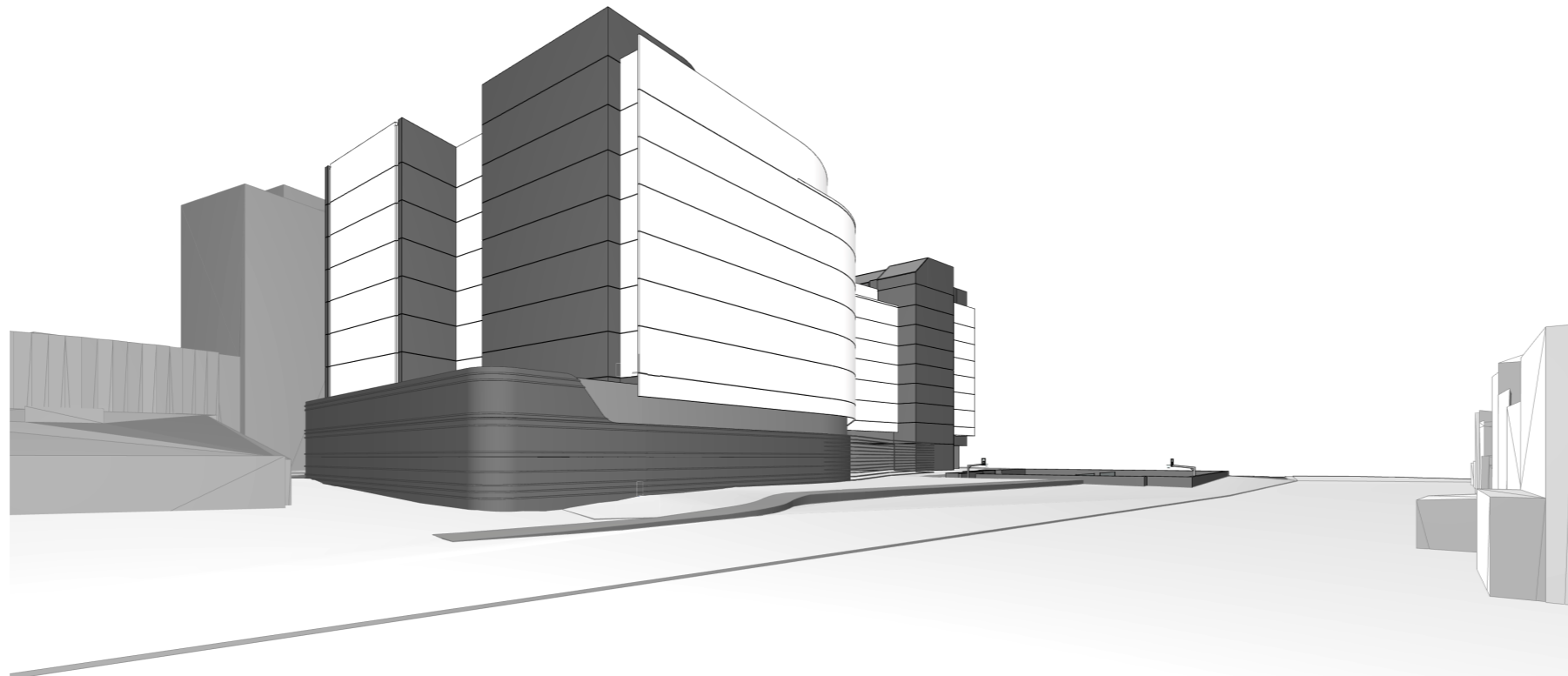


NOTE: DIMENSIONS REFERRED TO ON BOUNDARY SETBACKS ARE APPROXIMATE ONLY.





Building 1: PAC Review Revised Massing - Bird's Eye View from South West



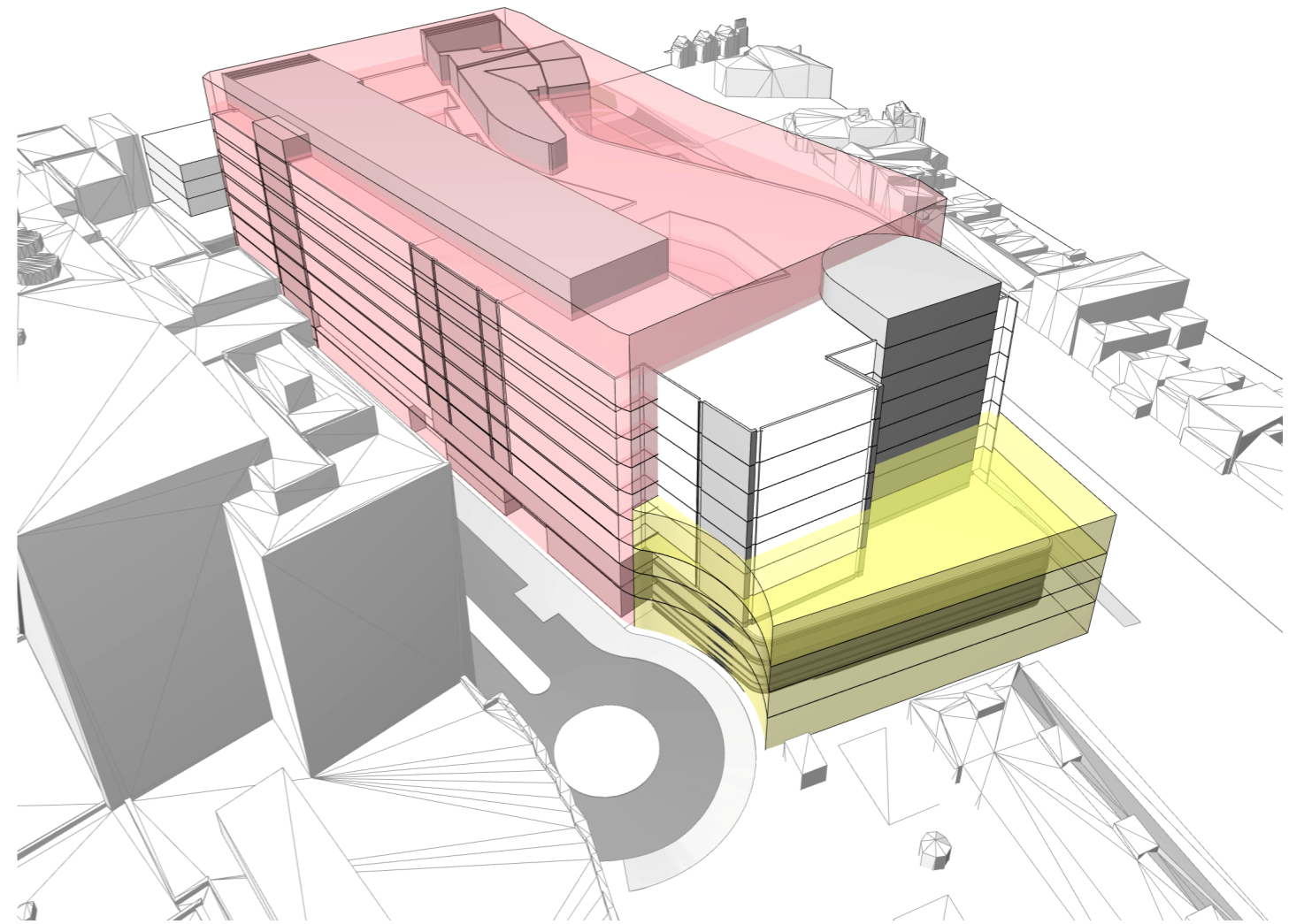
Building 1: PAC Review Revised Massing - Street Level View from South West



Building 1: PAC Review Revised Massing

**Legend**

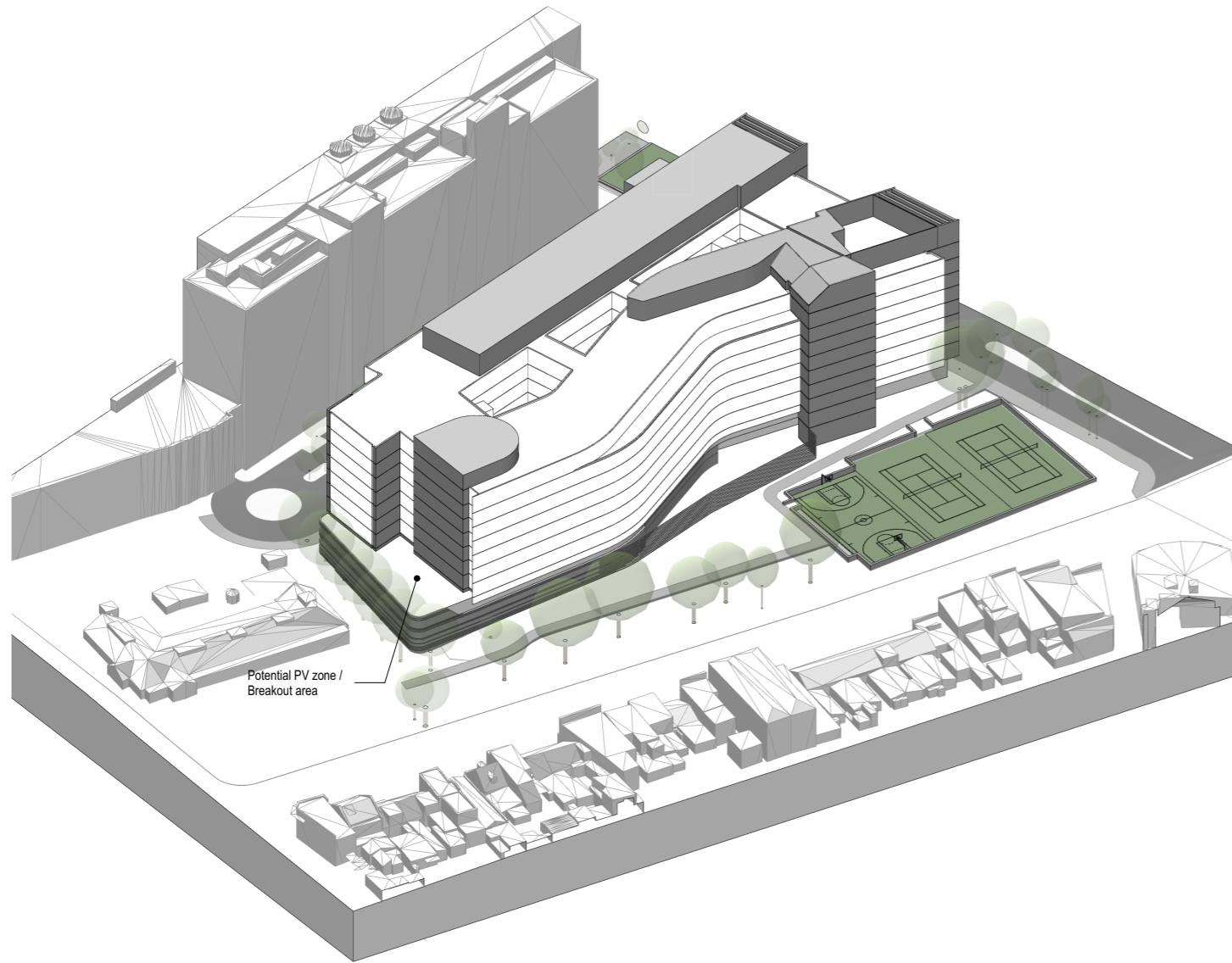
- Glazed areas of facade
- Facade areas & service cores with solid/opaque cladding



Building 1: PAC Review Revised Massing  
(with height envelope overlay)

**Legend**

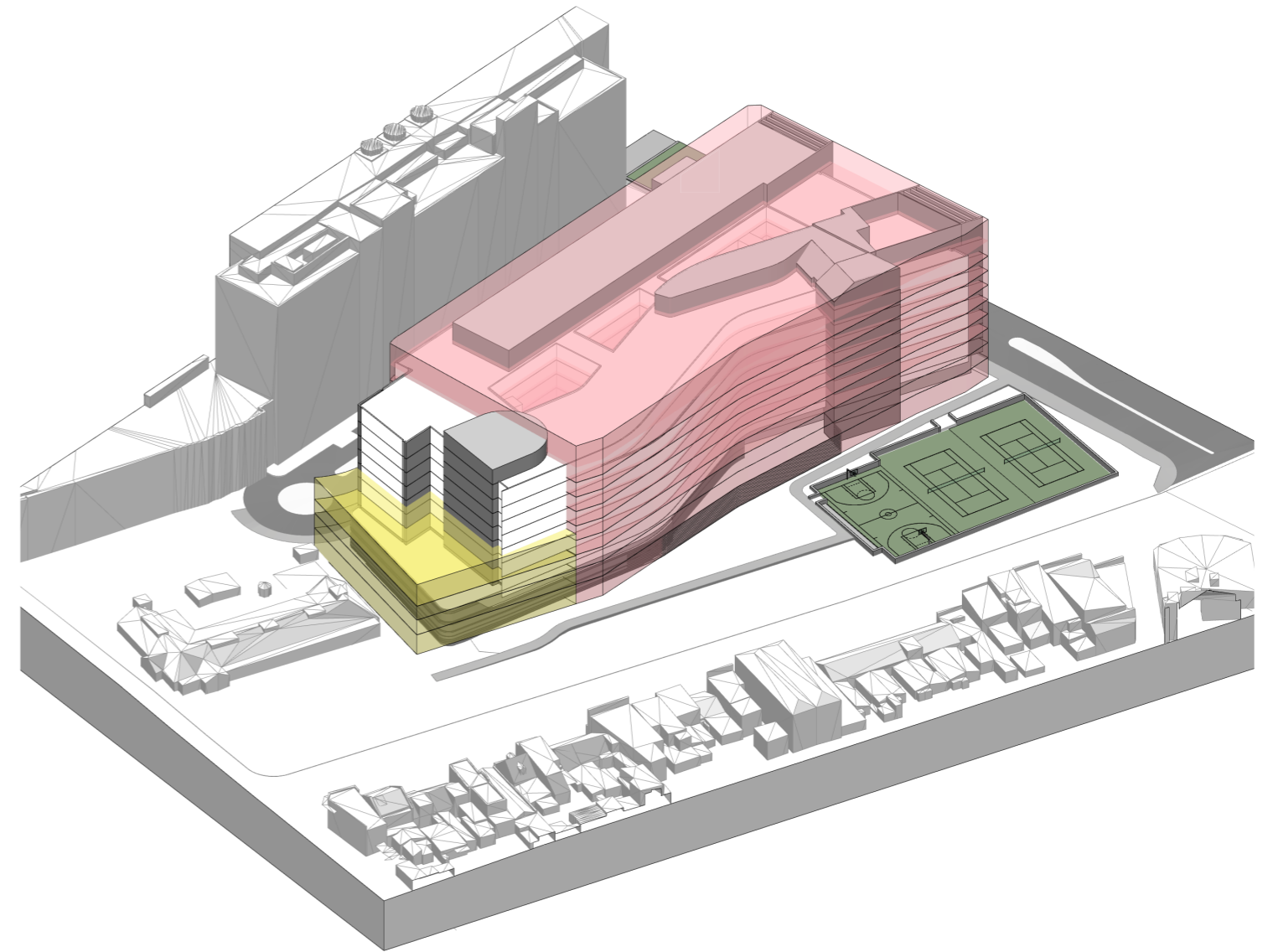
- 10 Storey Height Envelope (SEPP 2005)
- 4 Storey Height Envelope (SEPP 2005)



Building 1: PAC Review Revised Massing

Legend

- Glazed areas of facade
- Facade areas & service cores with solid/opaque cladding



Building 1: PAC Review Revised Massing  
(with height envelope overlay)

Legend

- 10 Storey Height Envelope (SEPP 2005)
- 4 Storey Height Envelope (SEPP 2005)