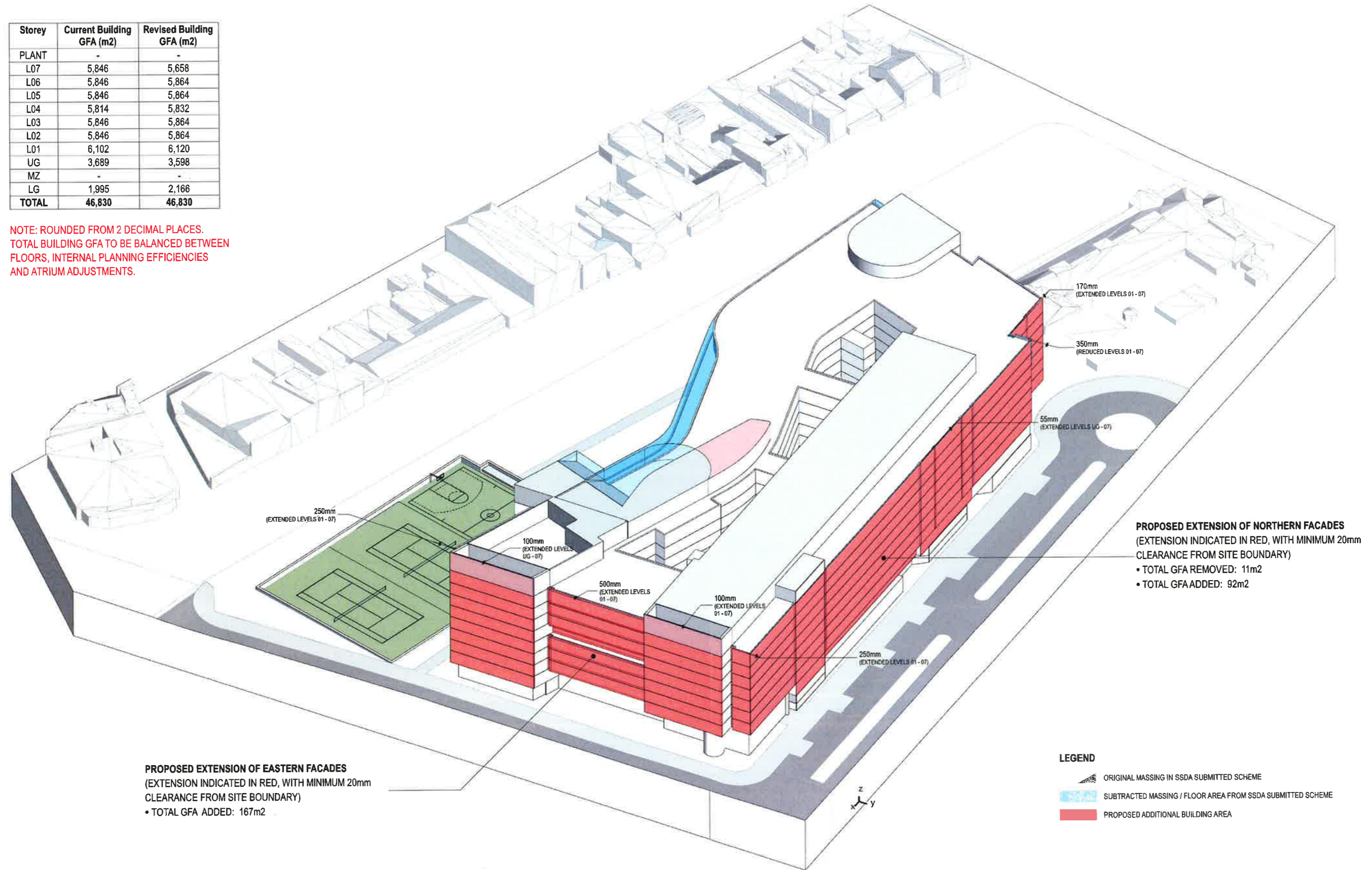


Storey	Current Building GFA (m2)	Revised Building GFA (m2)
PLANT	-	-
L07	5,846	5,658
L06	5,846	5,864
L05	5,846	5,864
L04	5,814	5,832
L03	5,846	5,864
L02	5,846	5,864
L01	6,102	6,120
UG	3,689	3,598
MZ	-	-
LG	1,995	2,166
TOTAL	46,830	46,830

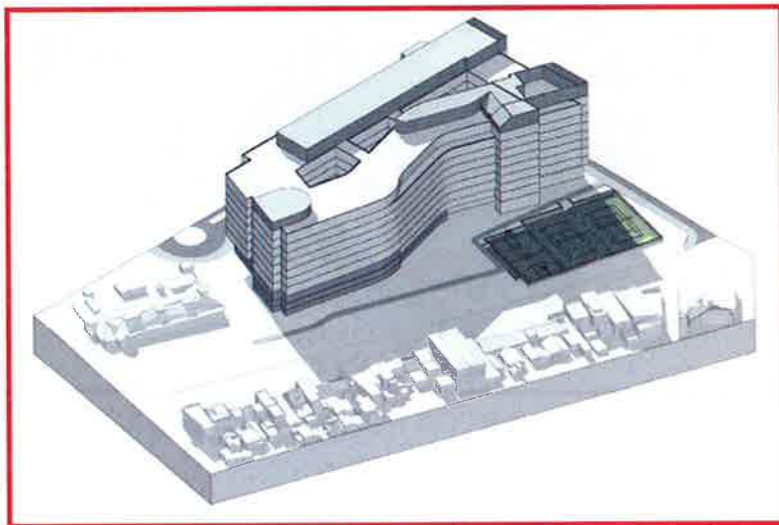
NOTE: ROUNDED FROM 2 DECIMAL PLACES.
TOTAL BUILDING GFA TO BE BALANCED BETWEEN FLOORS, INTERNAL PLANNING EFFICIENCIES AND ATRIUM ADJUSTMENTS.



1.1 Detail Shadow comparison: Henderson Road residences

Current RTS Proposal vs SSSA Submitted Scheme (August 2016)

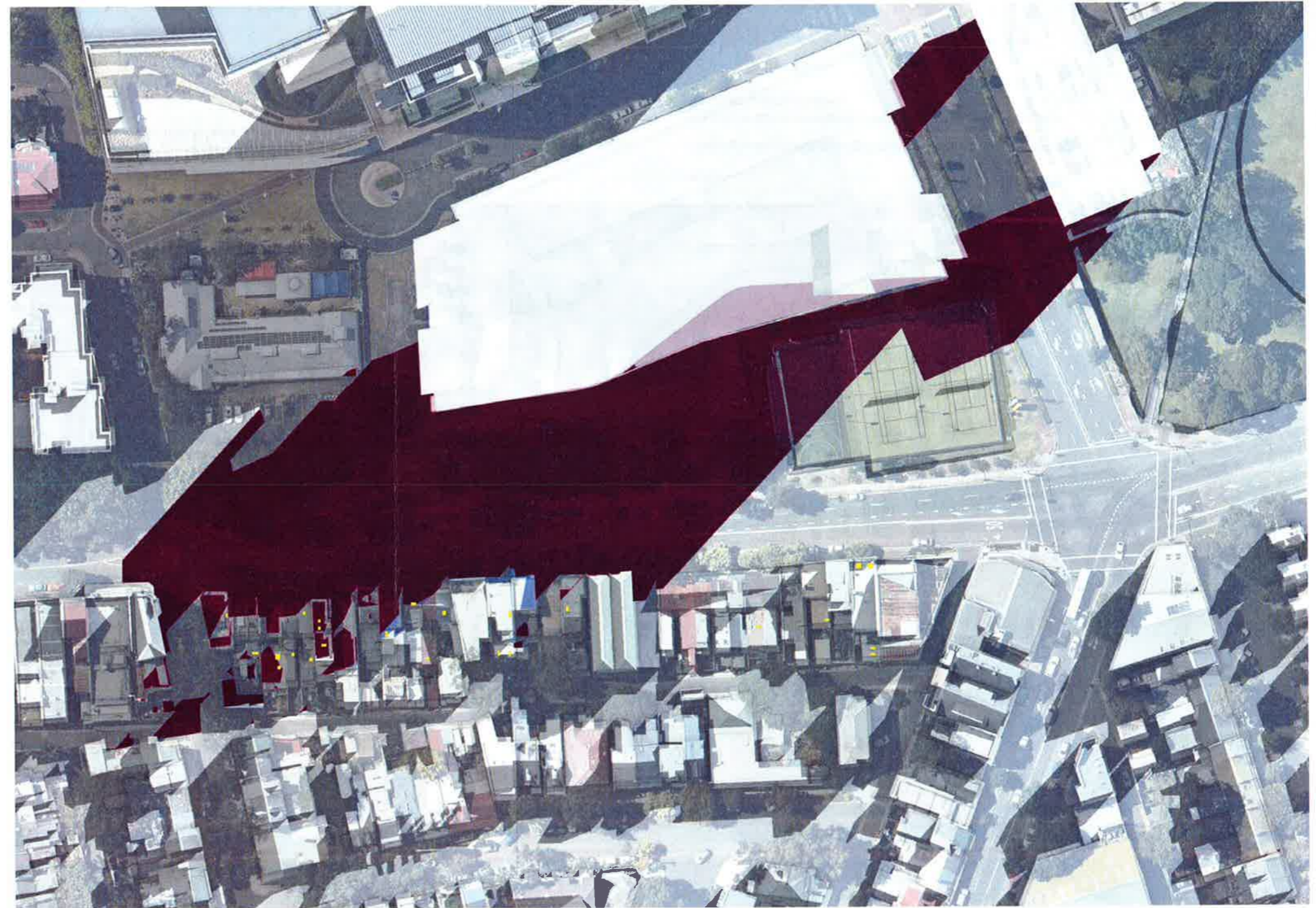
The following analysis compares shadows to the Henderson Road residences as cast by the current Revised Scheme (August 2016) against those cast by the RTS scheme. The red shadow represents that cast by the Revised Scheme (August 2016) as illustrated below (framed in red box). The blue shadow represents the shadow as cast by the RTS Scheme



Revised Scheme (August 2016)



RTS Scheme

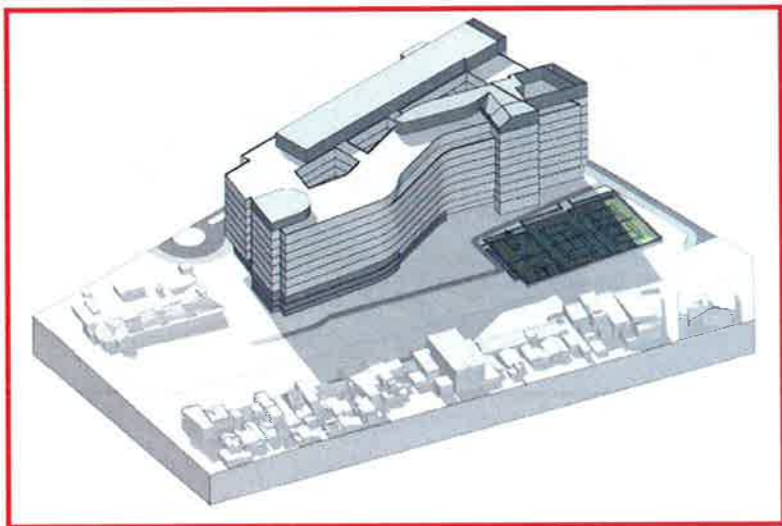


June 21 : 9.00am

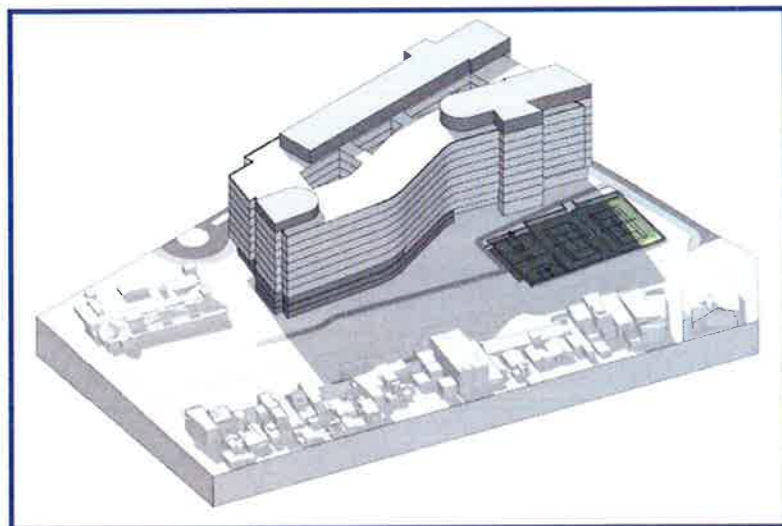
- Shadow cast by the RTS Scheme
- Shadow cast by the RTS Scheme & the Revised Scheme (August 2016)
- Shadow cast by the Revised Scheme (August 2016)
- Existing Shadows

Notes:

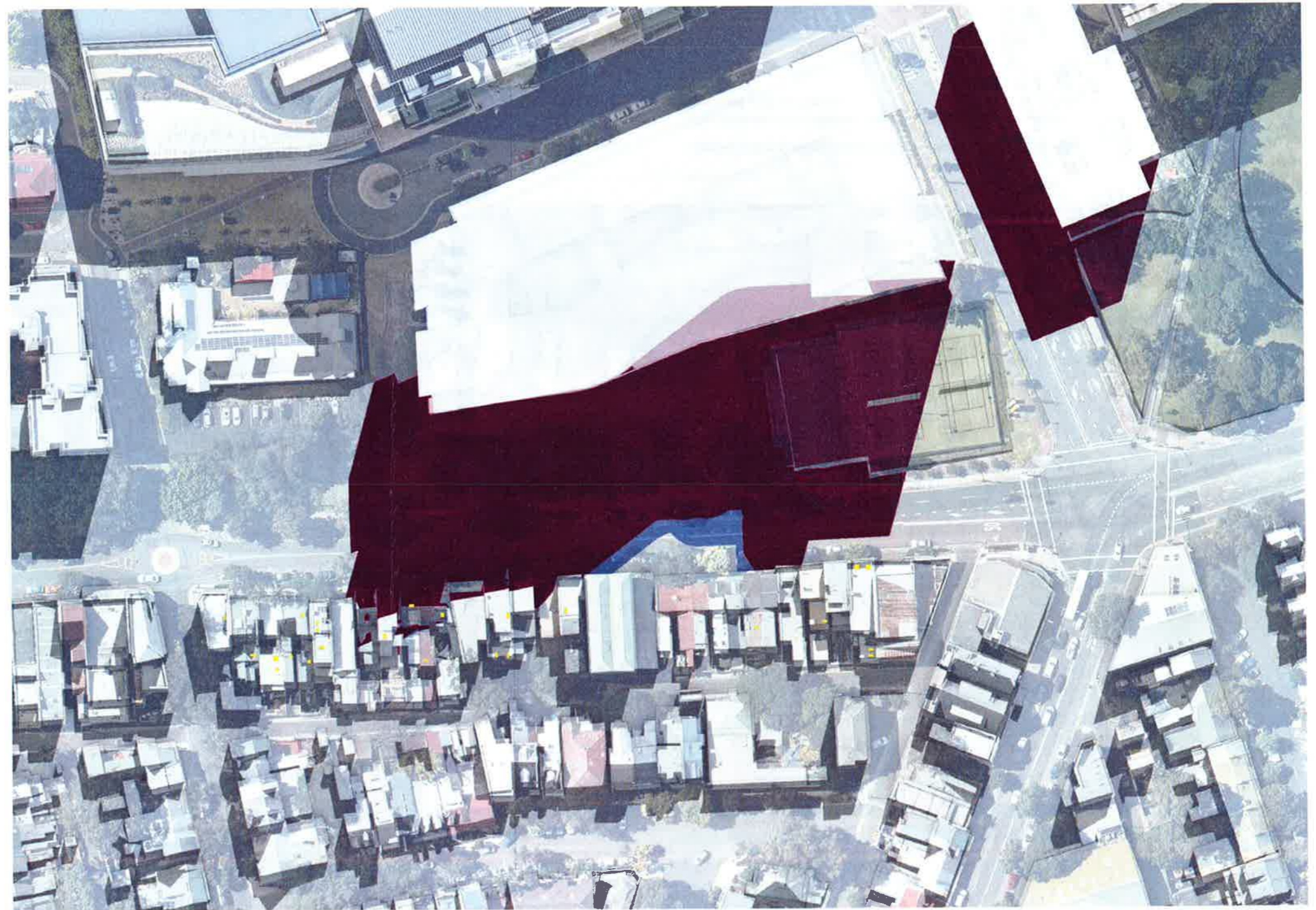
- Varying building heights along Henderson Road influence shadows
- The North-South orientation of existing buildings along Henderson Road cast existing shadows



Revised Scheme (August 2016)



RTS Scheme

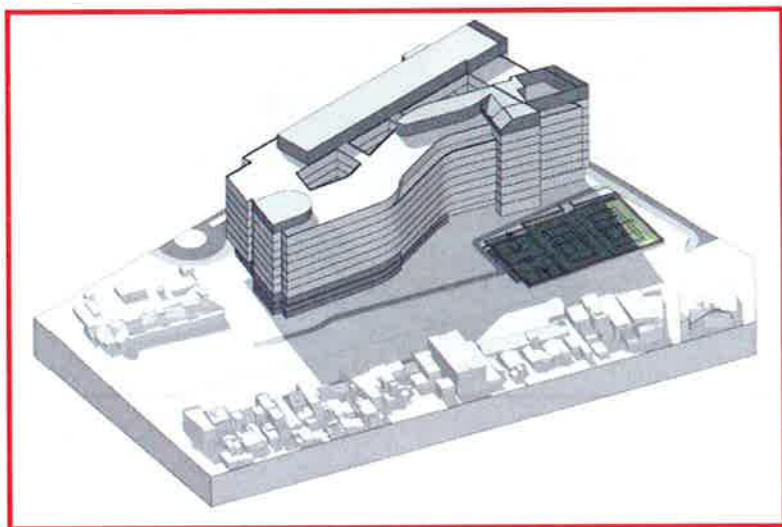


June 21 : 11.00am

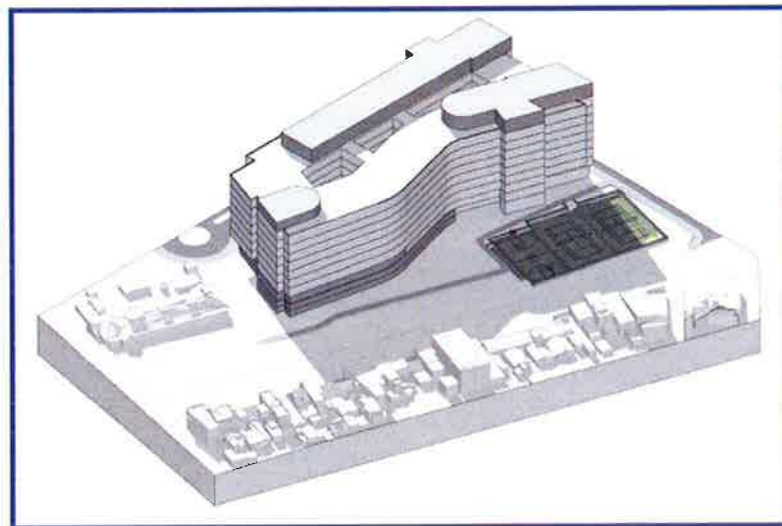
- Shadow cast by the RTS Scheme
- Shadow cast by the RTS Scheme & the Revised Scheme (August 2016)
- Shadow cast by the Revised Scheme (August 2016)
- Existing Shadows

Notes:

- Varying building heights along Henderson Road influence shadows
- The North-South orientation of existing buildings along Henderson Road cast existing shadows



Revised Scheme (August 2016)



RTS Scheme

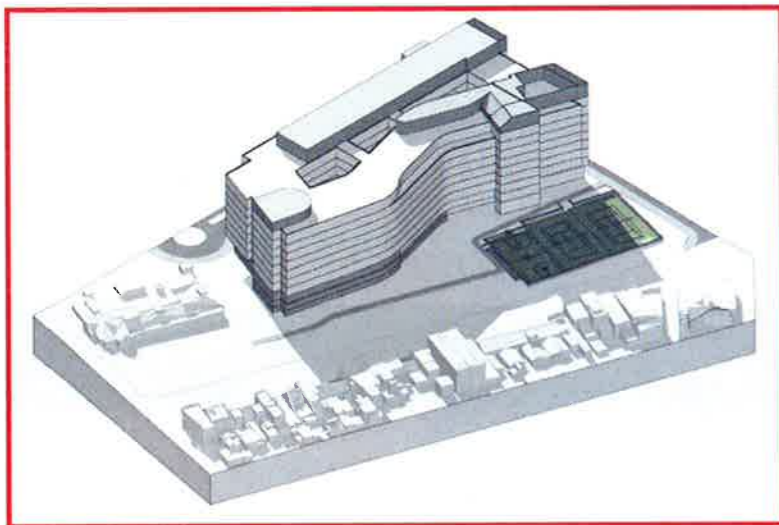


June 21 : 1.00pm

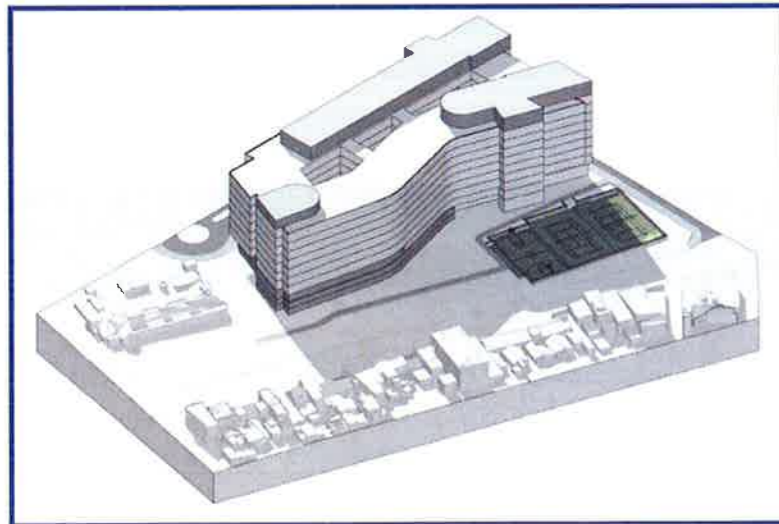
- Shadow cast by the RTS Scheme
- Shadow cast by the RTS Scheme & the Revised Scheme (August 2016)
- Shadow cast by the Revised Scheme (August 2016)
- Existing Shadows

Notes:

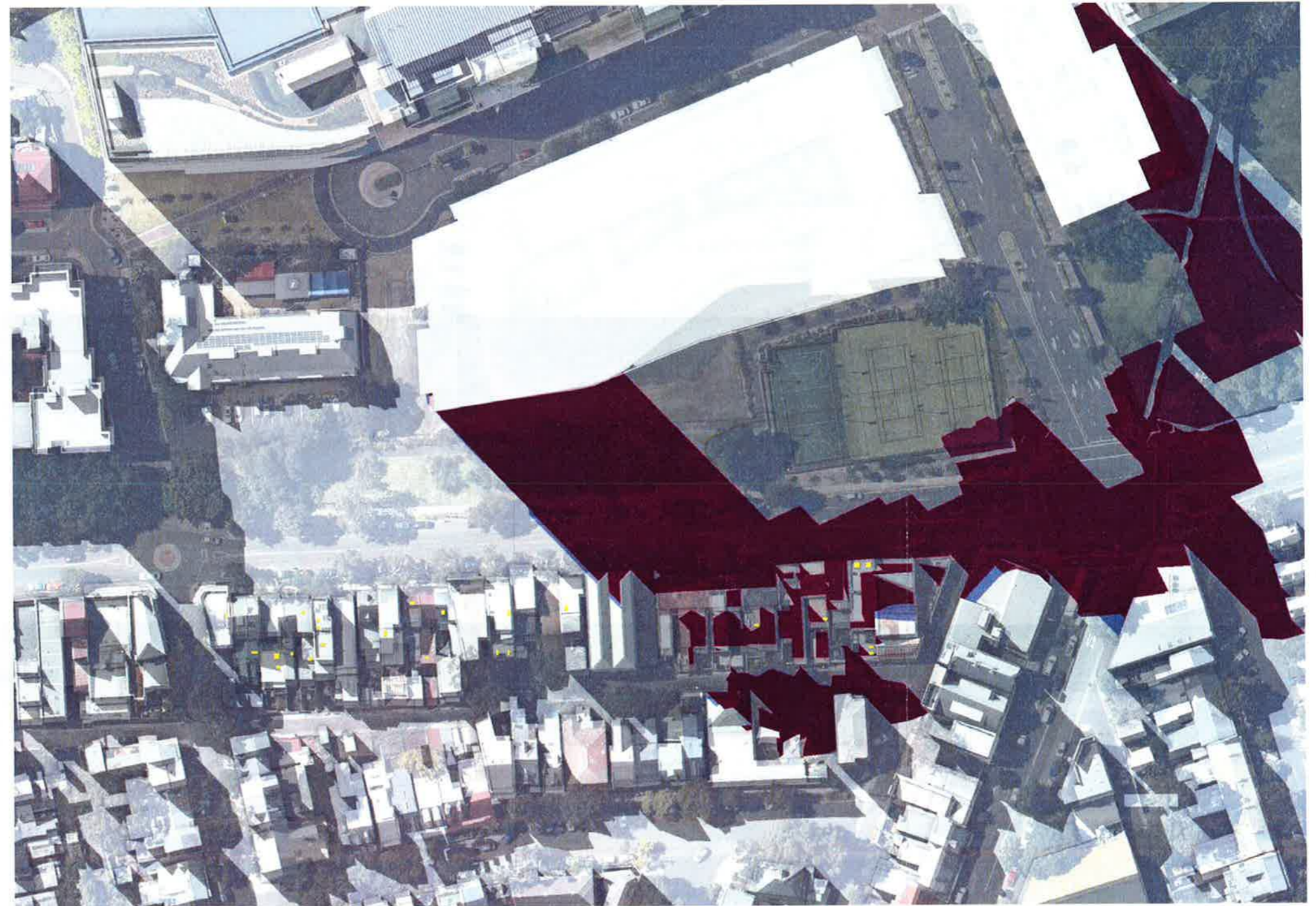
- Varying building heights along Henderson Road influence shadows
- The North-South orientation of existing buildings along Henderson Road cast existing shadows



Revised Scheme (August 2016)



RTS Scheme

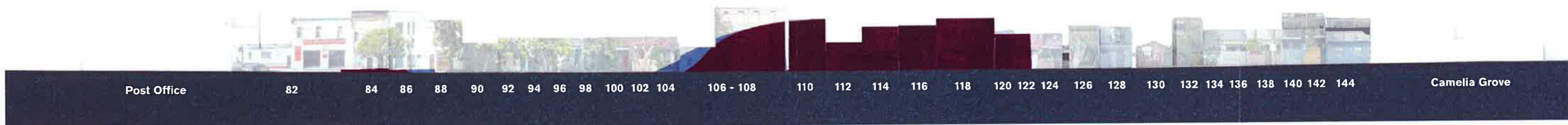


June 21 : 3.00pm

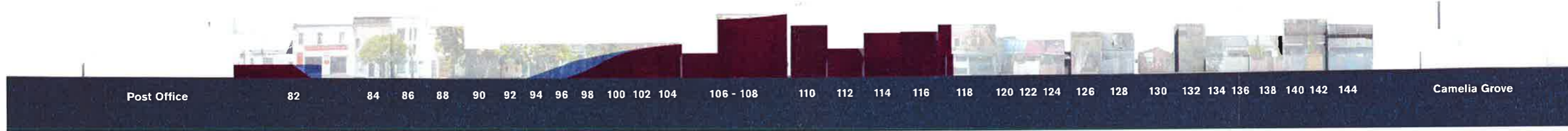
- Shadow cast by the RTS Scheme
- Shadow cast by the RTS Scheme & the Revised Scheme (August 2016)
- Shadow cast by the Revised Scheme (August 2016)
- Existing Shadows

Notes:

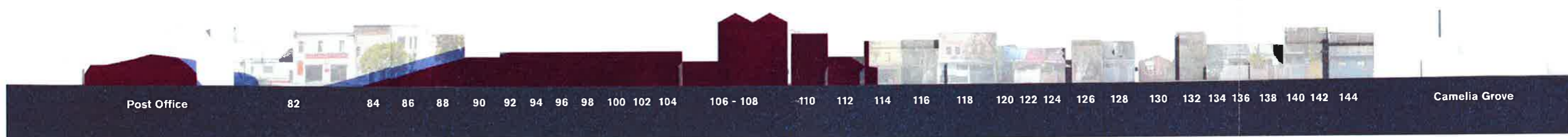
- Varying building heights along Henderson Road influence shadows
- The North-South orientation of existing buildings along Henderson Road cast existing shadows



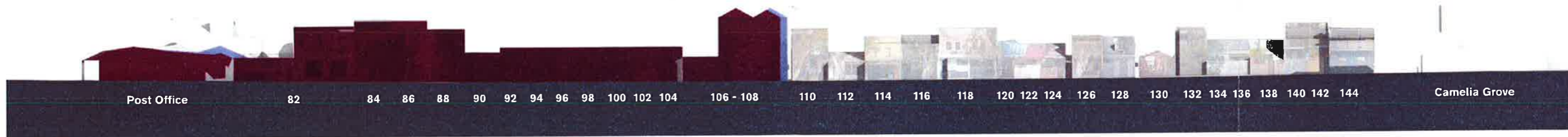
June 21 : 12.00pm



June 21 : 1.00pm



June 21 : 2.00pm



June 21 : 3.00pm