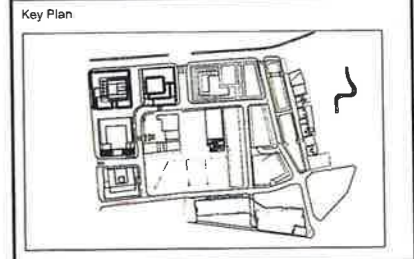


General Notes

1. Do not scale drawings. Dimensions govern.
2. All dimensions are in meters unless noted otherwise.
3. All dimensions shall be verified on site before proceeding work.
4. Foster + Partners shall be notified in writing of any discrepancies.

Rev.	Date	Reason For Issue	Ck
10	02/03/10	Updated Block Information	
09	16/10/08	Submission DoP	
20	09/08/16	S75W Amendments (MOD 12) Rev B	RP
19	06/04/16	S75W Amendments (MOD 12) Rev	RP
18	15/01/16	S75W Amendments (MOD 12)	RP
17	12/08/15	S75W Amendments (MOD 11) Rev	RP
16	28/11/14	S75W Amendments (MOD 11)	RP
15	10/11/14	S75W Amendments (MOD 10)	RP
14	23/01/14	S75W Amendments (MOD 9)	RP
13	19/12/12	S75W Amendments (MOD 8)	RP
12	19/12/12	S75W Amendments (MOD 8)	RP
11	19/12/12	S75W Amendments (MOD 8)	RP



Notes

	Public open space / Park
	Public Street Reservation: Footpaths, Street parking, Roadways, Shared ways
	Publicly Accessible Open space
	Publicly Accessible Throughway
	Publicly Accessible Road
	Public Landscaped Area
	Private Roadway / Publicly Accessible Open Space
	Development Boundary
	Private Land
	Area Identification

Project Frasers Broadway  
20 - 102 Broadway Sydney NSW 2000

Client Frasers Broadway  
L11, 488 Kent Street Sydney NSW 2000  
T: 02 8823 8800 F: 02 8823 8801

**Foster + Partners**

Riverside, 22 Heister Road  
London SW11 4AN  
T +44 (0)20 7798 0455  
F +44 (0)20 7798 1107

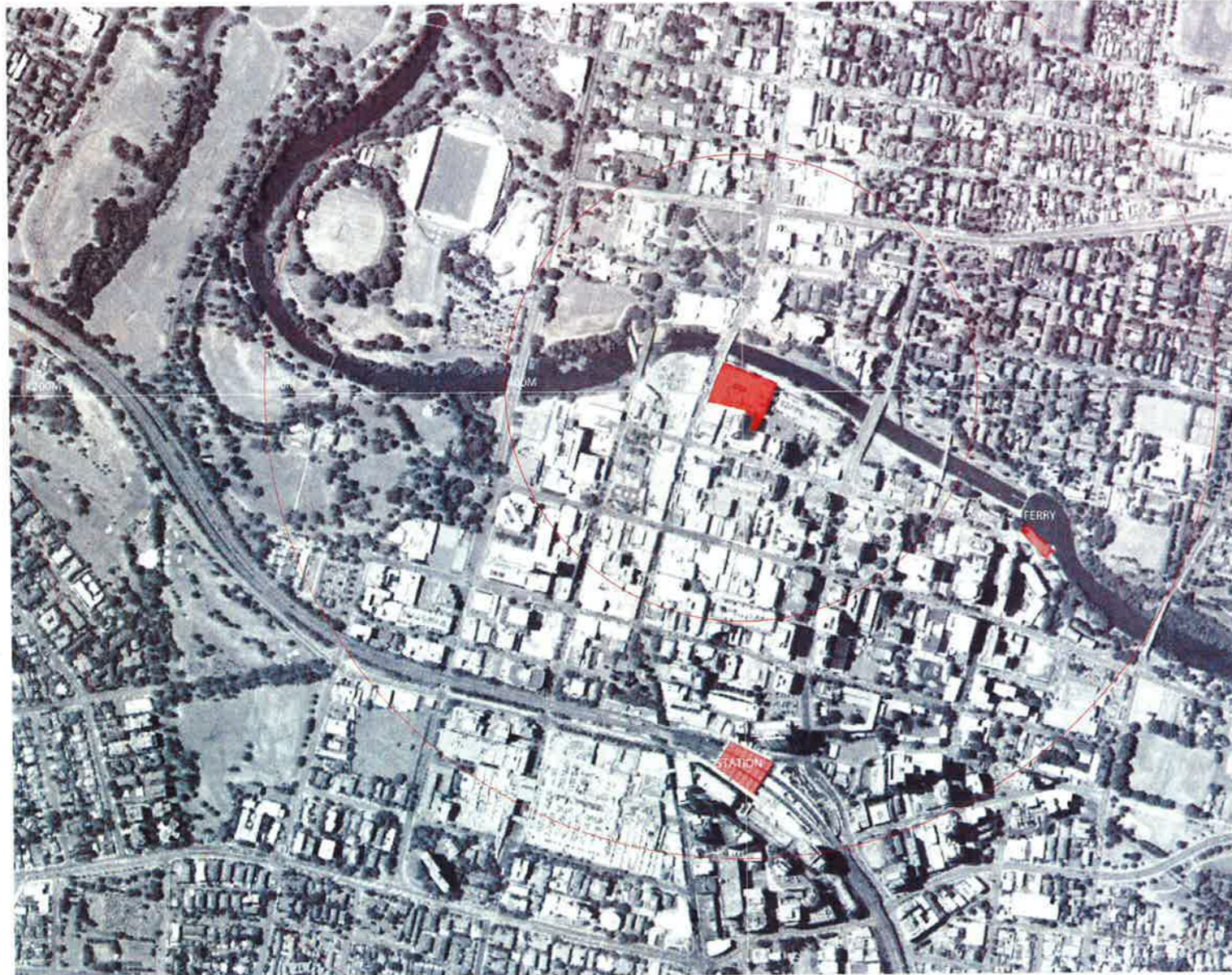
Title  
**Concept Plan  
Public Domain**

Project No.	Scale @ A3	Date	Drawn By
	1:1000	14/03/08	LB
Number	Revision		
A-1254	20		

# RIVERFRONT APARTMENTS

330 CHURCH STREET, PARRAMATTA

FOR MERITON APARTMENTS



## PROJECT DATA

SITE AREA: 6763 SQM  
+ land area bonus 7205 SQM

## APARTMENT MIX

TYPE	PODIUM	E TOWER	W TOWER	TOTAL				
STUDIO	0	0%	0	0%	0	0%		
1 BED	30	59%	64	29%	50	17%	156	24.7%
1 BED + ST	0	0%	0	0%	0	0%	0	0%
2 BED	21	41%	128	57%	274	77%	427	67%
3 BED	0	0%	32	14%	20	5.5%	53	8%
4 BED	0	0%	0	0%	2	0.5%	2	0.3%
TOTAL	51		224		356		631	

## GFA TABLE - REFER TO ASSU FOR GFA DIMORAMS

LEVEL	WEST TOWER	EAST TOWER	NO FLOORS	TOTAL
54	362.9		1	363.9
45-53	515.1		9	5535.9
41-44	606.3		4	2425.2
37-40	615.1		4	2461.2
34-36	615.1	659.3	3	3823.2
25-33	605	659.3	6	7585.8
21-27	696	659.3	7	9427.1
20	696	548	1	1244
5-18	696	659.3	15	20329.5
4	2152.4		1	2152.4
03	1486.6		1	1486.6
02	1486.6		1	1486.6
01	1486.6		1	1486.6
00 MEZZ	1394.7		1	1394.7
00	3080.8		1	3080.8
SITE AREA - 6758SQM + 7205SQM BONUS				
TOTAL GFA				64342.7
FSR				8.901

## DRAWING SCHEDULE

NUMBER	TITLE	SCALE
A_000	COVER SHEET/LOCATION PLAN	NTS
A_001	SITE ANALYSIS + CONTEXT PLAN	1:1000
A_096	GA PLAN - PARKING LEVEL 4	1:200 @ A1
A_097	GA PLAN - PARKING LEVEL 3	1:200 @ A1
A_098	GA PLAN - PARKING LEVEL 2	1:200 @ A1
A_099	GA PLAN - PARKING LEVEL 1	1:200 @ A1
A_100	GA PLAN - LEVEL 00 RETAIL	1:200 @ A1
A_100.1	GA PLAN - LEVEL 00 MEZZANINE	1:200 @ A1
A_101	GA PLAN - LEVEL 01 PODIUM	1:200 @ A1
A_102	GA PLAN - LEVEL 02 PODIUM	1:200 @ A1
A_103	GA PLAN - LEVEL 03 PODIUM	1:200 @ A1
A_104	GA PLAN - LEVEL 04 PODIUM ROOF	1:200 @ A1
A_105	GA PLAN - TYPICAL TOWER LOWER	1:200 @ A1
A_106	GA PLAN - TYPICAL TOWER MIDDLE	1:200 @ A1
A_107	GA PLAN - TYPICAL TOWER UPPER	1:200 @ A1
A_148	APARTMENT PLAN - LEVEL 4	1:100 @ A1
A_148.2	APARTMENT PLAN - LEVEL 5	1:100 @ A1
A_149	APARTMENT PLAN - LEVELS 6-19, 21, 22, 25+26	1:100 @ A1
A_149.1	APARTMENT PLAN - LEVEL 20	1:100 @ A1
A_149.2	APARTMENT PLAN - LEVELS 23, 24+27	1:100 @ A1
A_149.3	APARTMENT PLAN - LEVELS 24-27	1:100 @ A1 DELETED
A_150	APARTMENT PLAN - LEVELS 28-33	1:100 @ A1
A_151	APARTMENT PLAN - LEVELS 34-40	1:100 @ A1
A_151.1	APARTMENT PLAN - LEVELS 36 + 37 (EAST TOWER)	1:100 @ A1
A_152	APARTMENT PLAN - LEVELS 41-44	1:100 @ A1
A_153	APARTMENT PLAN - LEVEL 45-53	1:100 @ A1
A_154	APARTMENT PLAN - LEVEL 54	1:100 @ A1
A_155	APARTMENT PLAN - LEVEL 55 (Roof)	1:100 @ A1
A_156	APARTMENT PLANS - PODIUM LEVELS 1-3	1:100 @ A1
A_157	APARTMENT PLANS - PODIUM LEVELS 1-3	1:100 @ A1
A_166	APARTMENT PLAN - LEVELS 24-34	1:100 @ A1 DELETED
A_160	APARTMENT PLAN - LEVEL 35	1:100 @ A1 DELETED
A_160	APARTMENT PLAN - LEVEL 36	1:100 @ A1 DELETED
A_161	APARTMENT PLAN - PODIUM TERRACES	1:100 @ A1 DELETED
A_200	SITE SECTIONS	1:200 @ A1
A_300	SITE ELEVATIONS - COMPILED	1:500 @ A1
A_350	PODIUM - ELEVATIONS NORTH + WEST	1:200 @ A1
A_351	PODIUM - ELEVATIONS SOUTH + EAST	1:200 @ A1
A_352	EAST TOWER - ELEVATIONS NORTH + EAST	1:200 @ A1
A_353	EAST TOWER - ELEVATIONS SOUTH + WEST	1:200 @ A1
A_354	WEST TOWER - ELEVATIONS NORTH + EAST	1:250 @ A1
A_355	WEST TOWER - ELEVATIONS NORTH + EAST	1:250 @ A1
A_400	DETAILED ELEVATIONS - PODIUM	1:200 @ A1
A_401	DETAILED ELEVATIONS - PODIUM	1:200 @ A1
A_402	DETAILED ELEVATIONS - PODIUM	1:200 @ A1 DELETED
A_403	DETAILED ELEVATIONS - PODIUM	1:200 @ A1
A_404	DETAILED ELEVATIONS - PODIUM	1:200 @ A1
A_405	DETAILED ELEVATIONS - EAST TOWER	1:50 @ A1
A_406	DETAILED ELEVATIONS - EAST TOWER	1:50 @ A1
A_407	DETAILED ELEVATIONS - EAST TOWER	1:50 @ A1
A_408	DETAILED ELEVATIONS - WEST TOWER	1:50 @ A1
A_409	DETAILED ELEVATIONS - WEST TOWER	1:50 @ A1
A_410	DETAILED ELEVATIONS - WEST TOWER	1:50 @ A1
A_411	DETAILED ELEVATIONS - SIGNAGE	1:100 @ A1
A_501	SHADOW DIAGRAMS - WINTER 9.00AM	1:2000 @ A1
A_502	SHADOW DIAGRAMS - WINTER 12.00PM	1:2000 @ A1
A_503	SHADOW DIAGRAMS - WINTER 3.00PM	1:2000 @ A1
A_504	SHADOW DIAGRAMS - EQUINOX	1:2000 @ A1
A_505	SHADOW DIAGRAMS - SUMMER	1:2000 @ A1
A_550	DIAGRAM - GFA AREAS	1:2000 @ A1
A_650	ADAPTABLE PLAN SCHEDULES	1:50 @ A1
A_651	ADAPTED PLAN SCHEDULES	1:50 @ A1
A_652	ADAPTED PLAN SCHEDULES	1:50 @ A1
A_801	COLOUR AND MATERIALS BOARD	N/A @ A1

01 PLAN - LOCATION PLAN APPROX. 1:5000



MERITON APARTMENTS  
LEVEL 11, MERITON TOWER  
528 KENT STREET, SYDNEY

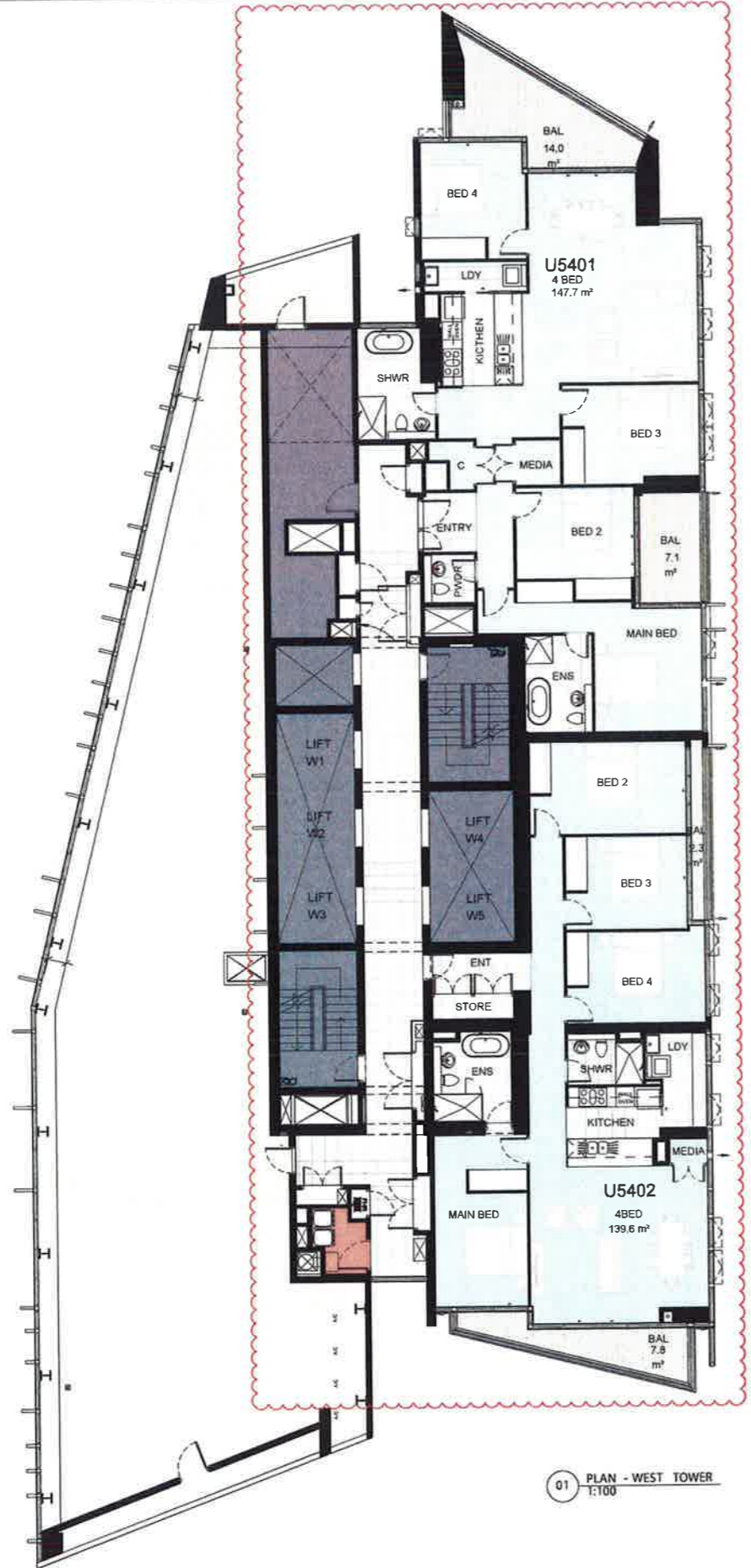
ISSUE NUMBER	REVISION NUMBER	LEADER	KEY CONSULTANT INFO	KEY CONSULTANT INFO	GENERAL NOTES	KEY PLAN (GENERAL INFO)		
21	12/17/14	Approved 4/17/14 Application	LANDSCAPE	GUY STURT & ASSOC GUY STURT 3511 3144 guy@sturtassociates.com.au	BASE	EFFICIENT LIVING TRACY COOKES 9949 9332 tracy@efficientliving.com.au	DO NOT SCALE OFF THIS DRAWING. USE FIGURED DIMENSIONS ONLY. VERIFY ALL DIMENSIONS ON SITE AND RESOLVE ANY DISCREPANCIES BEFORE PROCEEDING. COPYRIGHT OF THIS DRAWING AND THE DESIGN EXCLUDED REMAIN THE PROPERTY OF TONY CARO ARCHITECTURE. BUILDER TO EXAMINE SITE AND VERIFY SITE CONDITIONS PRIOR TO COMMENCING WORK. BUILDER TO CONTRA BUILDING SETOUT PRIOR TO COMMENCING WORK. ALL ARCHITECTURAL DRAWINGS TO BE READ IN CONJUNCTION WITH OTHER ARCHITECTURAL DETAILS, SCHEDULES AND SPECIFICATIONS. ALL ARCHITECTURAL DRAWINGS AND DOCUMENTS TO BE READ IN CONJUNCTION WITH OTHER CONSULTANTS.	KEY PLAN (GENERAL INFO)
19	12/17/14	Approved 4/17/14 Application	STRUCTURAL	BONACCI GROUP TIM HARRIS 8267 8489 tim@bonaccigroup.com	SOLAR ACCESS	NEVADA AL-KHALIDI 9427 8100 nehad.al-khalidi@theppg.com.au	DRAWINGS AND SPECIFICATIONS. BUILDER TO ALLOW FOR DEFLECTION TO ALL SLABS AS REQUIRED TO STRUCTURAL ENGINEERS. SPECIFICATION CAD DOCUMENTS ARE ISSUED FOR INFORMATION ONLY. CHANGES ARE NOT TO BE MADE TO ANY DOCUMENTATION WITHOUT THE ARCHITECT'S WRITTEN APPROVAL. TCA TAKES NO RESPONSIBILITY FOR THE ELECTRONIC TRANSMISSION DIMENSIONS OR ACCURACY OF THESE DRAWINGS. CEILING LEVEL AT INDICATED DISTANCE FROM FINISHED FLOOR LEVEL. FOR ALL EXTERNAL LEVELS REFER TO LANDSCAPE ARCHITECT'S DRAWINGS.	KEY PLAN (GENERAL INFO)
18	12/17/14	Approved 4/17/14 Application	HYDRAULIC	TBA	TRAFFIC	TPA 8006 HETTLE 9416 9955 tpa@tpa.com.au	SCALE 1:5000	PROJECT
17	12/17/14	Approved 4/17/14 Application					PROJECT	RIVERFRONT APARTMENTS
16	12/17/14	Approved 4/17/14 Application					SCALE	1:5000
15	12/17/14	Approved 4/17/14 Application					DATE	MAR 2011
14	12/17/14	Approved 4/17/14 Application					BY	JF
13	12/17/14	Approved 4/17/14 Application					DATE	MAR 2011
12	12/17/14	Approved 4/17/14 Application					BY	TC
11	12/17/14	Approved 4/17/14 Application					DATE	12/2015
10	12/17/14	Approved 4/17/14 Application					BY	M
9	12/17/14	Approved 4/17/14 Application					DATE	21
8	12/17/14	Approved 4/17/14 Application					BY	
7	12/17/14	Approved 4/17/14 Application					DATE	
6	12/17/14	Approved 4/17/14 Application					BY	
5	12/17/14	Approved 4/17/14 Application					DATE	
4	12/17/14	Approved 4/17/14 Application					BY	
3	12/17/14	Approved 4/17/14 Application					DATE	
2	12/17/14	Approved 4/17/14 Application					BY	
1	12/17/14	Approved 4/17/14 Application					DATE	

ISSUE NUMBER	REVISION NUMBER	LEADER	KEY CONSULTANT INFO	KEY CONSULTANT INFO	GENERAL NOTES	KEY PLAN (GENERAL INFO)		
21	12/17/14	Approved 4/17/14 Application	LANDSCAPE	GUY STURT & ASSOC GUY STURT 3511 3144 guy@sturtassociates.com.au	BASE	EFFICIENT LIVING TRACY COOKES 9949 9332 tracy@efficientliving.com.au	DO NOT SCALE OFF THIS DRAWING. USE FIGURED DIMENSIONS ONLY. VERIFY ALL DIMENSIONS ON SITE AND RESOLVE ANY DISCREPANCIES BEFORE PROCEEDING. COPYRIGHT OF THIS DRAWING AND THE DESIGN EXCLUDED REMAIN THE PROPERTY OF TONY CARO ARCHITECTURE. BUILDER TO EXAMINE SITE AND VERIFY SITE CONDITIONS PRIOR TO COMMENCING WORK. BUILDER TO CONTRA BUILDING SETOUT PRIOR TO COMMENCING WORK. ALL ARCHITECTURAL DRAWINGS TO BE READ IN CONJUNCTION WITH OTHER ARCHITECTURAL DETAILS, SCHEDULES AND SPECIFICATIONS. ALL ARCHITECTURAL DRAWINGS AND DOCUMENTS TO BE READ IN CONJUNCTION WITH OTHER CONSULTANTS.	KEY PLAN (GENERAL INFO)
19	12/17/14	Approved 4/17/14 Application	STRUCTURAL	BONACCI GROUP TIM HARRIS 8267 8489 tim@bonaccigroup.com	SOLAR ACCESS	NEVADA AL-KHALIDI 9427 8100 nehad.al-khalidi@theppg.com.au	DRAWINGS AND SPECIFICATIONS. BUILDER TO ALLOW FOR DEFLECTION TO ALL SLABS AS REQUIRED TO STRUCTURAL ENGINEERS. SPECIFICATION CAD DOCUMENTS ARE ISSUED FOR INFORMATION ONLY. CHANGES ARE NOT TO BE MADE TO ANY DOCUMENTATION WITHOUT THE ARCHITECT'S WRITTEN APPROVAL. TCA TAKES NO RESPONSIBILITY FOR THE ELECTRONIC TRANSMISSION DIMENSIONS OR ACCURACY OF THESE DRAWINGS. CEILING LEVEL AT INDICATED DISTANCE FROM FINISHED FLOOR LEVEL. FOR ALL EXTERNAL LEVELS REFER TO LANDSCAPE ARCHITECT'S DRAWINGS.	KEY PLAN (GENERAL INFO)
18	12/17/14	Approved 4/17/14 Application	HYDRAULIC	TBA	TRAFFIC	TPA 8006 HETTLE 9416 9955 tpa@tpa.com.au	SCALE 1:5000	PROJECT
17	12/17/14	Approved 4/17/14 Application					PROJECT	RIVERFRONT APARTMENTS
16	12/17/14	Approved 4/17/14 Application					SCALE	1:5000
15	12/17/14	Approved 4/17/14 Application					DATE	MAR 2011
14	12/17/14	Approved 4/17/14 Application					BY	JF
13	12/17/14	Approved 4/17/14 Application					DATE	MAR 2011
12	12/17/14	Approved 4/17/14 Application					BY	TC
11	12/17/14	Approved 4/17/14 Application					DATE	12/2015
10	12/17/14	Approved 4/17/14 Application					BY	M
9	12/17/14	Approved 4/17/14 Application					DATE	21
8	12/17/14	Approved 4/17/14 Application					BY	
7	12/17/14	Approved 4/17/14 Application					DATE	
6	12/17/14	Approved 4/17/14 Application					BY	
5	12/17/14	Approved 4/17/14 Application					DATE	
4	12/17/14	Approved 4/17/14 Application					BY	
3	12/17/14	Approved 4/17/14 Application					DATE	
2	12/17/14	Approved 4/17/14 Application					BY	
1	12/17/14	Approved 4/17/14 Application					DATE	

Cover

A000

Revision		By	Date	Description
1	12/18/14	AT	12/18/14	Issue for construction
2	12/18/14	JF	12/18/14	Issue for construction
3	12/18/14	JF	12/18/14	Issue for construction
4	12/18/14	JF	12/18/14	Issue for construction
5	12/18/14	JF	12/18/14	Issue for construction
6	12/18/14	JF	12/18/14	Issue for construction
7	12/18/14	JF	12/18/14	Issue for construction
8	12/18/14	JF	12/18/14	Issue for construction
9	12/18/14	JF	12/18/14	Issue for construction
10	12/18/14	JF	12/18/14	Issue for construction
11	12/18/14	JF	12/18/14	Issue for construction
12	12/18/14	JF	12/18/14	Issue for construction
13	12/18/14	JF	12/18/14	Issue for construction
14	12/18/14	JF	12/18/14	Issue for construction
15	12/18/14	JF	12/18/14	Issue for construction
16	12/18/14	JF	12/18/14	Issue for construction
17	12/18/14	JF	12/18/14	Issue for construction
18	12/18/14	JF	12/18/14	Issue for construction
19	12/18/14	JF	12/18/14	Issue for construction
20	12/18/14	JF	12/18/14	Issue for construction
21	12/18/14	JF	12/18/14	Issue for construction
22	12/18/14	JF	12/18/14	Issue for construction
23	12/18/14	JF	12/18/14	Issue for construction
24	12/18/14	JF	12/18/14	Issue for construction
25	12/18/14	JF	12/18/14	Issue for construction
26	12/18/14	JF	12/18/14	Issue for construction
27	12/18/14	JF	12/18/14	Issue for construction
28	12/18/14	JF	12/18/14	Issue for construction
29	12/18/14	JF	12/18/14	Issue for construction
30	12/18/14	JF	12/18/14	Issue for construction
31	12/18/14	JF	12/18/14	Issue for construction
32	12/18/14	JF	12/18/14	Issue for construction
33	12/18/14	JF	12/18/14	Issue for construction
34	12/18/14	JF	12/18/14	Issue for construction
35	12/18/14	JF	12/18/14	Issue for construction
36	12/18/14	JF	12/18/14	Issue for construction
37	12/18/14	JF	12/18/14	Issue for construction
38	12/18/14	JF	12/18/14	Issue for construction
39	12/18/14	JF	12/18/14	Issue for construction
40	12/18/14	JF	12/18/14	Issue for construction
41	12/18/14	JF	12/18/14	Issue for construction
42	12/18/14	JF	12/18/14	Issue for construction
43	12/18/14	JF	12/18/14	Issue for construction
44	12/18/14	JF	12/18/14	Issue for construction
45	12/18/14	JF	12/18/14	Issue for construction
46	12/18/14	JF	12/18/14	Issue for construction
47	12/18/14	JF	12/18/14	Issue for construction
48	12/18/14	JF	12/18/14	Issue for construction
49	12/18/14	JF	12/18/14	Issue for construction
50	12/18/14	JF	12/18/14	Issue for construction
51	12/18/14	JF	12/18/14	Issue for construction
52	12/18/14	JF	12/18/14	Issue for construction
53	12/18/14	JF	12/18/14	Issue for construction
54	12/18/14	JF	12/18/14	Issue for construction
55	12/18/14	JF	12/18/14	Issue for construction
56	12/18/14	JF	12/18/14	Issue for construction
57	12/18/14	JF	12/18/14	Issue for construction
58	12/18/14	JF	12/18/14	Issue for construction
59	12/18/14	JF	12/18/14	Issue for construction
60	12/18/14	JF	12/18/14	Issue for construction
61	12/18/14	JF	12/18/14	Issue for construction
62	12/18/14	JF	12/18/14	Issue for construction
63	12/18/14	JF	12/18/14	Issue for construction
64	12/18/14	JF	12/18/14	Issue for construction
65	12/18/14	JF	12/18/14	Issue for construction
66	12/18/14	JF	12/18/14	Issue for construction
67	12/18/14	JF	12/18/14	Issue for construction
68	12/18/14	JF	12/18/14	Issue for construction
69	12/18/14	JF	12/18/14	Issue for construction
70	12/18/14	JF	12/18/14	Issue for construction
71	12/18/14	JF	12/18/14	Issue for construction
72	12/18/14	JF	12/18/14	Issue for construction
73	12/18/14	JF	12/18/14	Issue for construction
74	12/18/14	JF	12/18/14	Issue for construction
75	12/18/14	JF	12/18/14	Issue for construction
76	12/18/14	JF	12/18/14	Issue for construction
77	12/18/14	JF	12/18/14	Issue for construction
78	12/18/14	JF	12/18/14	Issue for construction
79	12/18/14	JF	12/18/14	Issue for construction
80	12/18/14	JF	12/18/14	Issue for construction
81	12/18/14	JF	12/18/14	Issue for construction
82	12/18/14	JF	12/18/14	Issue for construction
83	12/18/14	JF	12/18/14	Issue for construction
84	12/18/14	JF	12/18/14	Issue for construction
85	12/18/14	JF	12/18/14	Issue for construction
86	12/18/14	JF	12/18/14	Issue for construction
87	12/18/14	JF	12/18/14	Issue for construction
88	12/18/14	JF	12/18/14	Issue for construction
89	12/18/14	JF	12/18/14	Issue for construction
90	12/18/14	JF	12/18/14	Issue for construction
91	12/18/14	JF	12/18/14	Issue for construction
92	12/18/14	JF	12/18/14	Issue for construction
93	12/18/14	JF	12/18/14	Issue for construction
94	12/18/14	JF	12/18/14	Issue for construction
95	12/18/14	JF	12/18/14	Issue for construction
96	12/18/14	JF	12/18/14	Issue for construction
97	12/18/14	JF	12/18/14	Issue for construction
98	12/18/14	JF	12/18/14	Issue for construction
99	12/18/14	JF	12/18/14	Issue for construction
100	12/18/14	JF	12/18/14	Issue for construction



01 PLAN - WEST TOWER  
1:100

02 PLAN - EAST TOWER  
1:100



MERITON APARTMENTS  
LEVEL 11, MERITON TOWER  
528 KENT STREET SYDNEY

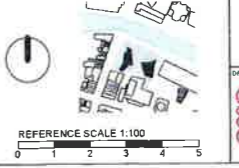
ISSUE REGISTER	REVISION REGISTER	LEGEND
10 12/18/14 Approved 4/17/14 Application	10	10
11 12/18/14 Approved 4/17/14 Application	11	11
12 12/18/14 Approved 4/17/14 Application	12	12
13 12/18/14 Approved 4/17/14 Application	13	13
14 12/18/14 Approved 4/17/14 Application	14	14
15 12/18/14 Approved 4/17/14 Application	15	15
16 12/18/14 Approved 4/17/14 Application	16	16
17 12/18/14 Approved 4/17/14 Application	17	17
18 12/18/14 Approved 4/17/14 Application	18	18
19 12/18/14 Approved 4/17/14 Application	19	19
20 12/18/14 Approved 4/17/14 Application	20	20
21 12/18/14 Approved 4/17/14 Application	21	21
22 12/18/14 Approved 4/17/14 Application	22	22
23 12/18/14 Approved 4/17/14 Application	23	23
24 12/18/14 Approved 4/17/14 Application	24	24
25 12/18/14 Approved 4/17/14 Application	25	25
26 12/18/14 Approved 4/17/14 Application	26	26
27 12/18/14 Approved 4/17/14 Application	27	27
28 12/18/14 Approved 4/17/14 Application	28	28
29 12/18/14 Approved 4/17/14 Application	29	29
30 12/18/14 Approved 4/17/14 Application	30	30
31 12/18/14 Approved 4/17/14 Application	31	31
32 12/18/14 Approved 4/17/14 Application	32	32
33 12/18/14 Approved 4/17/14 Application	33	33
34 12/18/14 Approved 4/17/14 Application	34	34
35 12/18/14 Approved 4/17/14 Application	35	35
36 12/18/14 Approved 4/17/14 Application	36	36
37 12/18/14 Approved 4/17/14 Application	37	37
38 12/18/14 Approved 4/17/14 Application	38	38
39 12/18/14 Approved 4/17/14 Application	39	39
40 12/18/14 Approved 4/17/14 Application	40	40
41 12/18/14 Approved 4/17/14 Application	41	41
42 12/18/14 Approved 4/17/14 Application	42	42
43 12/18/14 Approved 4/17/14 Application	43	43
44 12/18/14 Approved 4/17/14 Application	44	44
45 12/18/14 Approved 4/17/14 Application	45	45
46 12/18/14 Approved 4/17/14 Application	46	46
47 12/18/14 Approved 4/17/14 Application	47	47
48 12/18/14 Approved 4/17/14 Application	48	48
49 12/18/14 Approved 4/17/14 Application	49	49
50 12/18/14 Approved 4/17/14 Application	50	50
51 12/18/14 Approved 4/17/14 Application	51	51
52 12/18/14 Approved 4/17/14 Application	52	52
53 12/18/14 Approved 4/17/14 Application	53	53
54 12/18/14 Approved 4/17/14 Application	54	54
55 12/18/14 Approved 4/17/14 Application	55	55
56 12/18/14 Approved 4/17/14 Application	56	56
57 12/18/14 Approved 4/17/14 Application	57	57
58 12/18/14 Approved 4/17/14 Application	58	58
59 12/18/14 Approved 4/17/14 Application	59	59
60 12/18/14 Approved 4/17/14 Application	60	60
61 12/18/14 Approved 4/17/14 Application	61	61
62 12/18/14 Approved 4/17/14 Application	62	62
63 12/18/14 Approved 4/17/14 Application	63	63
64 12/18/14 Approved 4/17/14 Application	64	64
65 12/18/14 Approved 4/17/14 Application	65	65
66 12/18/14 Approved 4/17/14 Application	66	66
67 12/18/14 Approved 4/17/14 Application	67	67
68 12/18/14 Approved 4/17/14 Application	68	68
69 12/18/14 Approved 4/17/14 Application	69	69
70 12/18/14 Approved 4/17/14 Application	70	70
71 12/18/14 Approved 4/17/14 Application	71	71
72 12/18/14 Approved 4/17/14 Application	72	72
73 12/18/14 Approved 4/17/14 Application	73	73
74 12/18/14 Approved 4/17/14 Application	74	74
75 12/18/14 Approved 4/17/14 Application	75	75
76 12/18/14 Approved 4/17/14 Application	76	76
77 12/18/14 Approved 4/17/14 Application	77	77
78 12/18/14 Approved 4/17/14 Application	78	78
79 12/18/14 Approved 4/17/14 Application	79	79
80 12/18/14 Approved 4/17/14 Application	80	80
81 12/18/14 Approved 4/17/14 Application	81	81
82 12/18/14 Approved 4/17/14 Application	82	82
83 12/18/14 Approved 4/17/14 Application	83	83
84 12/18/14 Approved 4/17/14 Application	84	84
85 12/18/14 Approved 4/17/14 Application	85	85
86 12/18/14 Approved 4/17/14 Application	86	86
87 12/18/14 Approved 4/17/14 Application	87	87
88 12/18/14 Approved 4/17/14 Application	88	88
89 12/18/14 Approved 4/17/14 Application	89	89
90 12/18/14 Approved 4/17/14 Application	90	90
91 12/18/14 Approved 4/17/14 Application	91	91
92 12/18/14 Approved 4/17/14 Application	92	92
93 12/18/14 Approved 4/17/14 Application	93	93
94 12/18/14 Approved 4/17/14 Application	94	94
95 12/18/14 Approved 4/17/14 Application	95	95
96 12/18/14 Approved 4/17/14 Application	96	96
97 12/18/14 Approved 4/17/14 Application	97	97
98 12/18/14 Approved 4/17/14 Application	98	98
99 12/18/14 Approved 4/17/14 Application	99	99
100 12/18/14 Approved 4/17/14 Application	100	100

KEY CONSULTANT INFO
LANDSCAPE: GUY STURT & ASSOC GUY STURT 0211 3184 guy@sturtassociates.com.au
STRUCTURAL: BONACCI GROUP TAM HOWE 8287 8488 t Howe@bonaccigroup.com
HYDRAULIC: TBA TBA TBA

KEY CONSULTANT INFO
BASA: EFFICIENT LIVING TRACEY COOKER 8489 8832 tracy@efficientliving.com.au
SOLAR ACCESS: REGGIES NEHAD AL-RHAYALDY 8427 8100 nehad@reggies.com.au
TRAFFIC: TTA KOGS NETTLE 8416 189 956 kogs@ttanet.com.au

DO NOT SCALE OFF THIS DRAWING. USE FIGURED DIMENSIONS ONLY. VERIFY ALL DIMENSIONS ON SITE AND RESOLVE ANY DISCREPANCIES BEFORE PROCEEDING. COPYRIGHT OF THIS DRAWING AND THE DESIGNS EXECUTED THEREIN REMAIN THE PROPERTY OF TONY LAND ARCHITECTURE. BUILDER TO EXAMINE SITE AND VERIFY SITE CONDITIONS PRIOR TO COMMENCING WORK. BUILDER TO CONFIRM BUILDING SETOUT PRIOR TO COMMENCING WORK. ALL ARCHITECTURAL DRAWINGS TO BE READ IN CONJUNCTION WITH OTHER ARCHITECTURAL DETAILS, SCHEDULES AND SPECIFICATIONS. ALL ARCHITECTURAL DRAWINGS AND DOCUMENTS TO BE READ IN CONJUNCTION WITH OTHER CONSULTANTS.

DRAWINGS AND SPECIFICATIONS. BUILDER TO ALLOW FOR DEFLECTION TO ALL SUBBAS REQUIRED TO STRUCTURAL ENGINEERS SPECIFICATION. C/O DOCUMENTS ARE ISSUED FOR INFORMATION ONLY. CHANGES ARE NOT TO BE MADE TO ANY DOCUMENTATION WITHOUT THE ARCHITECT'S WRITTEN APPROVAL. TCA TAKES NO RESPONSIBILITY FOR THE ELECTRONIC TRANSMISSION DIMENSIONS OR ACCURACY OF THESE DRAWINGS. CHECK LEVEL AT ADJACENT DISTANCE FROM FINISHED FLOOR LEVEL FOR ALL EXTERNAL LEVELS REFER TO LANDSCAPE ARCHITECT'S DRAWINGS.



PROJECT: RIVERFRONT APARTMENTS  
330 CHURCH STREET  
PARRAMATTA NSW  
DRAWING NAME: Plan\_Level 54

SCALE	FIG. SIZE	STATUS
1:100	A1	PRELIMINARY
MAR 2011	JF	TC
12/18/14	E	12

REFERENCE SCALE 1:100  
0 1 2 3 4 5





NO.	DATE	REVISION	BY	CHK
1	15/01/16	Approved 2/16/16 Application	SS	SS
2	02/04/16	Approved 1/16/16 Application	SS	SS
3	13/07/16	Approved 1/16/16 Application	SS	SS
4	18/01/17	Approved 1/17/17 Application	SS	SS
5	17/07/17	Approved 1/17/17 Application	SS	SS
6	01/01/18	Approved 1/18/18 Application	SS	SS
7	19/07/18	Approved 1/18/18 Application	SS	SS
8	05/01/19	Approved 1/19/19 Application	SS	SS
9	12/07/19	Approved 1/19/19 Application	SS	SS
10	28/01/20	Approved 1/20/20 Application	SS	SS

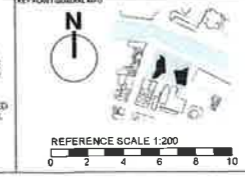
NO.	DATE	REVISION	BY	CHK
1	03/09/16	Revised 1/16/16 Application	SS	SS
2	02/04/16	Revised 1/16/16 Application	SS	SS
3	13/07/16	Approved 1/16/16 Application	SS	SS
4	18/01/17	Approved 1/17/17 Application	SS	SS
5	17/07/17	Approved 1/17/17 Application	SS	SS
6	01/01/18	Approved 1/18/18 Application	SS	SS
7	19/07/18	Approved 1/18/18 Application	SS	SS
8	05/01/19	Approved 1/19/19 Application	SS	SS
9	12/07/19	Approved 1/19/19 Application	SS	SS
10	28/01/20	Approved 1/20/20 Application	SS	SS

KEY CONSULTANT NO.	LANDSCAPE	STRUCTURAL	HYDRAULIC
01	GLY STURT & ASSOC SU STURT 9211 3784 gst@glysturt.com.au	BOUACCI GROUP TIM BOUACCI 8247 8400 tbouac@bouaccigroup.com	TBA TBA TBA

KEY CONSULTANT NO.	BASEX	SOLAR ACCESS	TRAFFIC
01	EFFICIENT LIVING TRACEY COOLES 8869 9132 tracy@efficientliving.com.au	HEGDES M240 AL-KHAWAJY 8427 8100 m240@al-khawajy@hegdes.com.au	TIPA ROSS HETTEL 3416 196 026 ross@tipa.com.au

**GENERAL NOTES**  
DO NOT SCALE OFF THIS DRAWING. USE FIGURED DIMENSIONS ONLY. VERIFY ALL DIMENSIONS ON SITE AND RESOLVE ANY DISCREPANCIES BEFORE PROCEEDING. COPYRIGHT OF THIS DRAWING AND THE DESIGN EXECUTED REMAIN THE PROPERTY OF TONY CARO ARCHITECTURE. BUILDERS TO EXAMINE SITE AND VERIFY SITE CONDITIONS PRIOR TO COMMENCING WORK. BUILDERS TO CONFIRM BUILDING SETOUT PRIOR TO COMMENCING WORK. ALL ARCHITECTURAL DRAWINGS TO BE READ IN CONJUNCTION WITH OTHER ARCHITECTURAL DETAILS, SCHEDULES AND SPECIFICATIONS. ALL ARCHITECTURAL DRAWINGS AND DOCUMENTS TO BE READ IN CONJUNCTION WITH OTHER CONSULTANTS

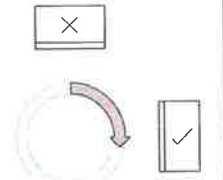
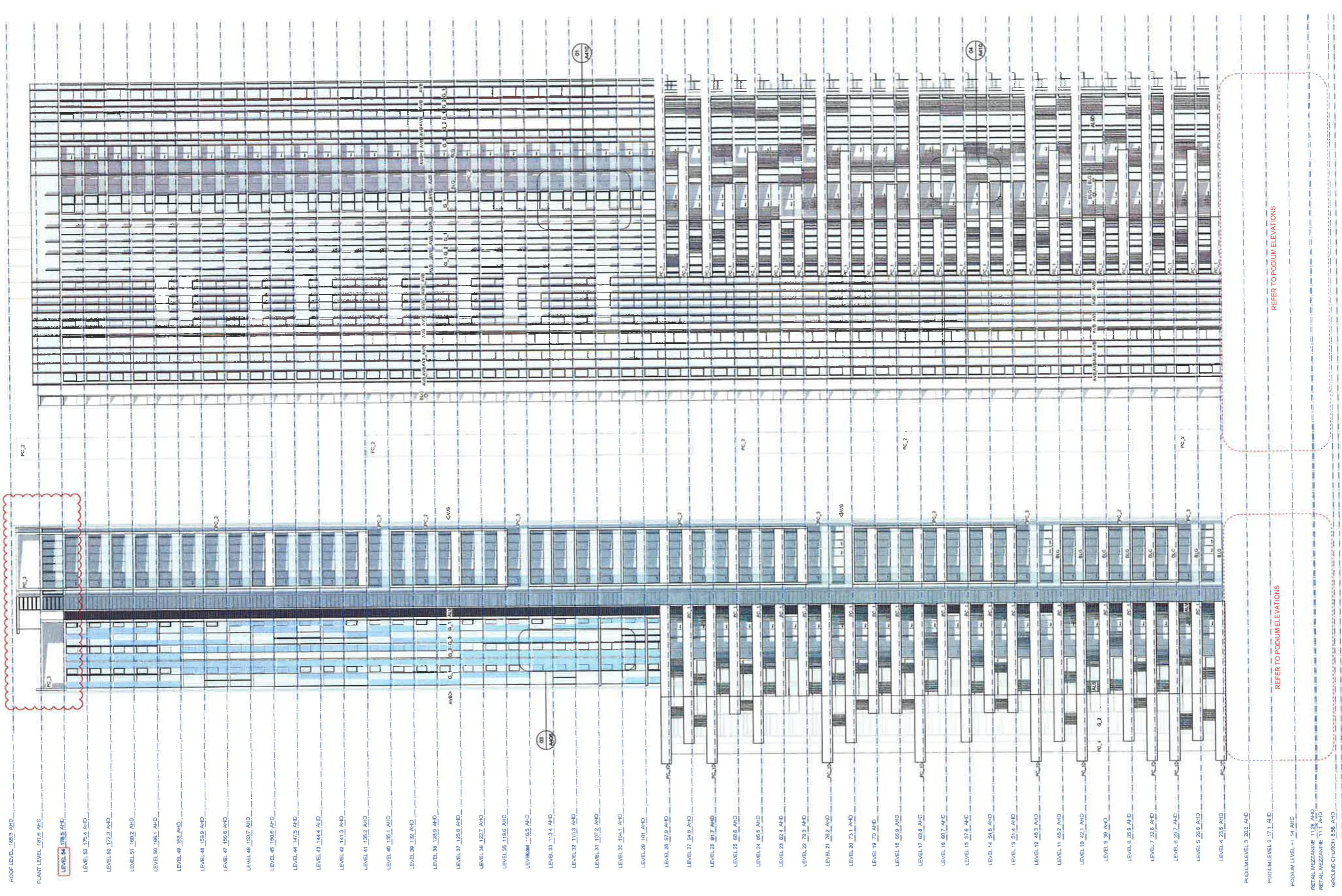
DRAWINGS AND SPECIFICATIONS. BUILDERS TO ALLOW FOR DEFLECTION TO ALL SLABS AS REQUIRED TO STRUCTURAL ENGINEER'S SPECIFICATION. CAD DOCUMENTS ARE ISSUED FOR INFORMATION ONLY. CHANGES ARE NOT TO BE MADE TO ANY DOCUMENTATION WITHOUT THE ARCHITECT'S WRITTEN APPROVAL. TCA TAKES NO RESPONSIBILITY FOR THE ELECTRICAL TRANSMISSION DIMENSIONS OR ACCURACY OF THESE DRAWINGS. CEILING LEVEL AT NOMINATED DISTANCE FROM FINISHED FLOOR LEVEL. FOR ALL EXTERNAL LEVELS REFER TO LANDSCAPE ARCHITECT'S DRAWINGS.



**RIVERFRONT APARTMENTS**  
330 CHURCH STREET  
PARRAMATTA NSW

**ELEVATIONS - WEST TOWER**

SCALE	PAGE NO.	TITLE	DATE
1:250	A1	ELEVATION - WEST	03/14



**LEGEND - EXTERNAL FINISHES**  
 AVB ALUMINIUM VERTICAL BLADE, VARYING DEPTH (500-800mm)  
 AVL ALUMINIUM VERTICAL BLADE, VARYING DEPTH (500-800mm)  
 AVS ALUMINIUM VERTICAL BLADE, VARYING DEPTH (500-800mm)  
 BCC BALCONY CONCRETE WITH PAINTED FINISH OR BRICK  
 BLC BALCONY CONCRETE WITH PAINTED FINISH OR BRICK  
 CLD CLADDING WITH PAINTED FINISH (GREY PEBBLE)  
 G.1 GROUND FLOOR  
 G.2 GROUND FLOOR  
 G.3 GROUND FLOOR

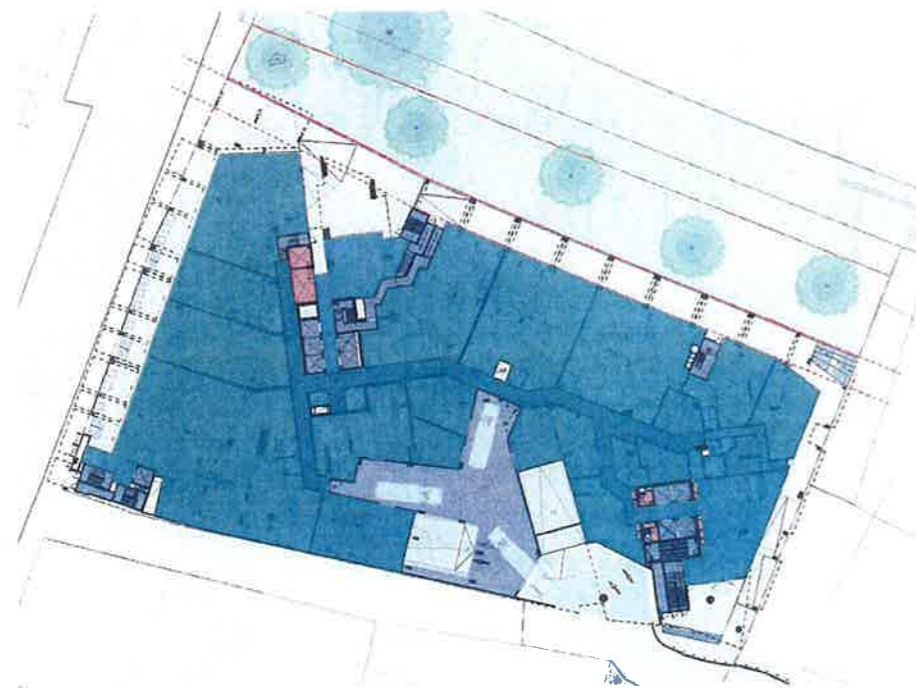
**LEGEND - EXTERNAL FINISHES**  
 PC.1 PRECAST CONCRETE BRICKWORK PANELS WITH PAINTED FINISH (GREY PEBBLE)  
 PC.2 PRECAST CONCRETE WITH PAINTED FINISH (GREY PEBBLE)  
 PC.3 PRECAST CONCRETE WITH PAINTED FINISH (GREY PEBBLE)  
 PC.4 PRECAST CONCRETE WITH VERTICAL TEXTURE AND PENETRATING PERFORMED WITH A SCREEN

**GENERAL LEGEND**  
 ALL ARCHITECTURAL DRAWINGS AND DOCUMENTS TO BE READ IN CONJUNCTION WITH OTHER ARCHITECTURAL DRAWINGS AND DOCUMENTS.  
 USE FIGURED DIMENSIONS ONLY. VERIFY ALL DIMENSIONS ON SITE AND RESOLVE ANY DISCREPANCIES BEFORE PROCEEDING.  
 COPYRIGHT TONY CARO ARCHITECTURE. BUILDERS TO EXAMINE SITE AND VERIFY SITE CONDITIONS PRIOR TO COMMENCING WORK. BUILDERS TO CONFIRM BUILDING SETOUT PRIOR TO COMMENCING WORK. ALL ARCHITECTURAL DRAWINGS TO BE READ IN CONJUNCTION WITH OTHER ARCHITECTURAL DETAILS, SCHEDULES AND SPECIFICATIONS. ALL ARCHITECTURAL DRAWINGS AND DOCUMENTS TO BE READ IN CONJUNCTION WITH OTHER CONSULTANTS.

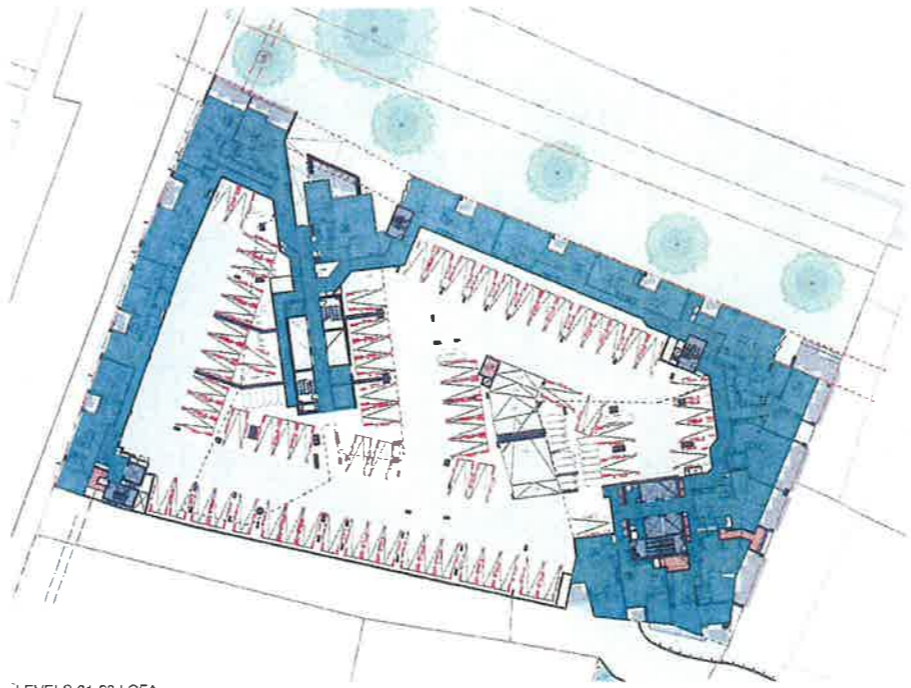
**ELEVATION - WEST**  
1:250 @A1

**ELEVATION - SOUTH**  
1:250 @A1

REFER TO PODIUM ELEVATIONS



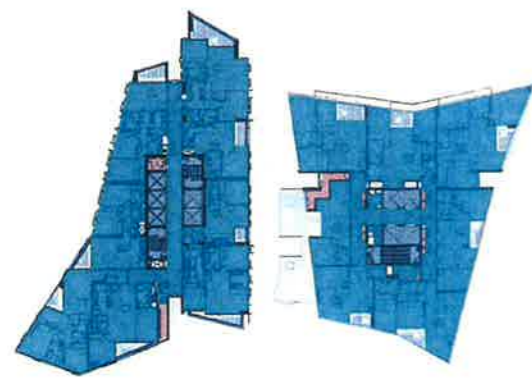
LEVEL 00 | GFA



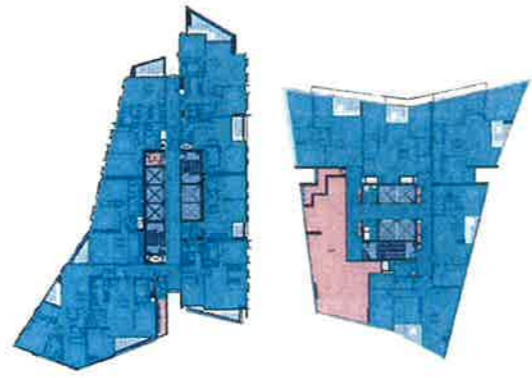
LEVELS 01-03 | GFA



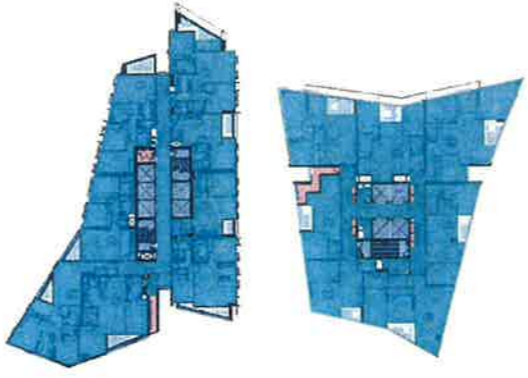
LEVEL 04 | GFA



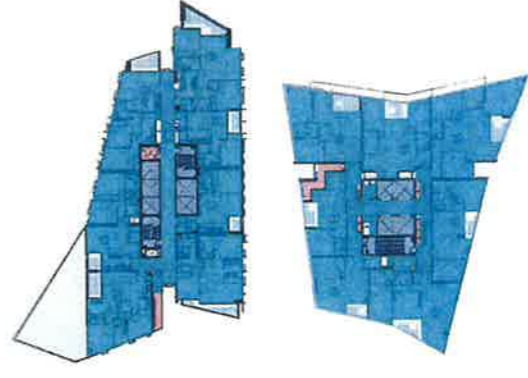
LEVELS 5-19 | GFA



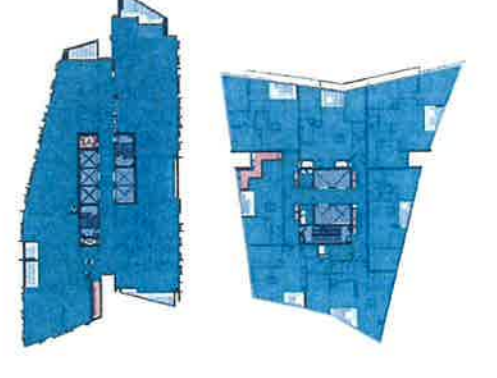
LEVEL 20 | GFA



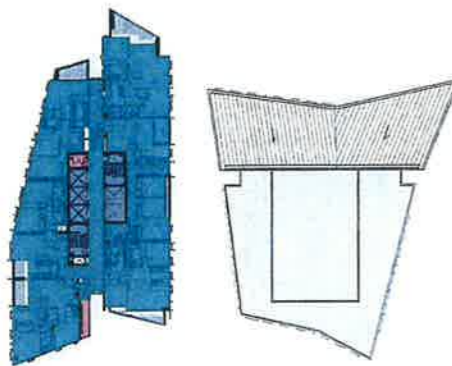
LEVELS 21-27 | GFA



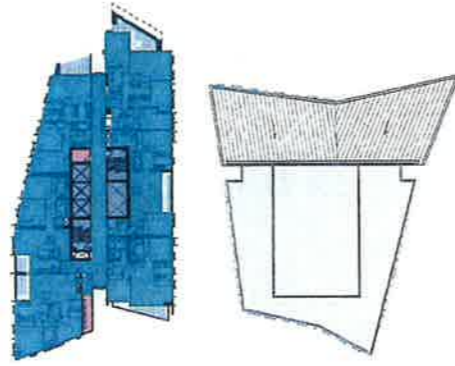
LEVEL 28-33 | GFA



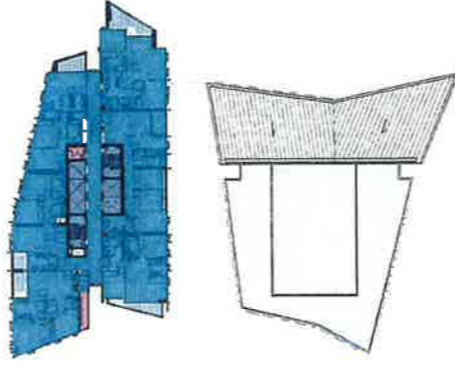
LEVEL 34-36 | GFA



LEVELS 37-40 | GFA



LEVELS 41-44 | GFA



LEVELS 45-53 | GFA



LEVEL 54 | GFA

**GFA TABLE - REFER TO ASSOCIATED GFA DIAGRAMS**

LEVEL	WEST TOWER	EAST TOWER	NO FLOORS	TOTAL
54	363.9		1	363.9
45-53	615.1		9	5535.9
41-44	606.3		4	2425.2
37-40	615.1		4	2461.2
34-36	615.1	659.3	3	3823.2
28-33	605	659.3	6	7585.8
21-27	606	659.3	7	9487.1
20	896	548	1	1244
5-19	696	659.3	15	20329.5
4	2152.4		1	2152.4
03	1486.6		1	1486.6
02	1486.6		1	1486.6
01	1486.6		1	1486.6
00 MEZZ	1394.7		1	1394.7
00	3080.8		1	3080.8
TOTAL GFA				64342.7
SITE AREA - 67588SQM + 726SQM BONUS				
FSR				9.60 1

DESIGNED BY  
**MERITON**  
 MERITON APARTMENTS  
 LEVEL 11 MERITON TOWER  
 52 NORTH STREET SYDNEY  
 NSW 2000

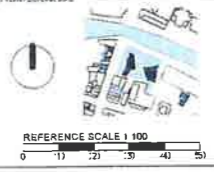
TONY CARO ARCHITECTURE P/L  
 LEVEL 3 - 2 QUEEN ST MILSONS POINT  
 NSW 2061 SYDNEY AUSTRALIA  
 T 9443 1000 F 9443 1133  
 WWW.TONYCAROARCHITECTURE.COM.AU

REVISION	REVISION	DATE
01	1:0000	10/10/2011
02	1:0000	10/10/2011
03	1:0000	10/10/2011
04	1:0000	10/10/2011
05	1:0000	10/10/2011
06	1:0000	10/10/2011
07	1:0000	10/10/2011
08	1:0000	10/10/2011
09	1:0000	10/10/2011
10	1:0000	10/10/2011
11	1:0000	10/10/2011
12	1:0000	10/10/2011
13	1:0000	10/10/2011
14	1:0000	10/10/2011
15	1:0000	10/10/2011
16	1:0000	10/10/2011
17	1:0000	10/10/2011
18	1:0000	10/10/2011
19	1:0000	10/10/2011
20	1:0000	10/10/2011
21	1:0000	10/10/2011
22	1:0000	10/10/2011
23	1:0000	10/10/2011
24	1:0000	10/10/2011
25	1:0000	10/10/2011
26	1:0000	10/10/2011
27	1:0000	10/10/2011
28	1:0000	10/10/2011
29	1:0000	10/10/2011
30	1:0000	10/10/2011
31	1:0000	10/10/2011
32	1:0000	10/10/2011
33	1:0000	10/10/2011
34	1:0000	10/10/2011
35	1:0000	10/10/2011
36	1:0000	10/10/2011
37	1:0000	10/10/2011
38	1:0000	10/10/2011
39	1:0000	10/10/2011
40	1:0000	10/10/2011
41	1:0000	10/10/2011
42	1:0000	10/10/2011
43	1:0000	10/10/2011
44	1:0000	10/10/2011
45	1:0000	10/10/2011
46	1:0000	10/10/2011
47	1:0000	10/10/2011
48	1:0000	10/10/2011
49	1:0000	10/10/2011
50	1:0000	10/10/2011

KEY	DESCRIPTION	KEY	DESCRIPTION
01	CONCRETE	01	CONCRETE
02	CONCRETE	02	CONCRETE
03	CONCRETE	03	CONCRETE
04	CONCRETE	04	CONCRETE
05	CONCRETE	05	CONCRETE
06	CONCRETE	06	CONCRETE
07	CONCRETE	07	CONCRETE
08	CONCRETE	08	CONCRETE
09	CONCRETE	09	CONCRETE
10	CONCRETE	10	CONCRETE
11	CONCRETE	11	CONCRETE
12	CONCRETE	12	CONCRETE
13	CONCRETE	13	CONCRETE
14	CONCRETE	14	CONCRETE
15	CONCRETE	15	CONCRETE
16	CONCRETE	16	CONCRETE
17	CONCRETE	17	CONCRETE
18	CONCRETE	18	CONCRETE
19	CONCRETE	19	CONCRETE
20	CONCRETE	20	CONCRETE
21	CONCRETE	21	CONCRETE
22	CONCRETE	22	CONCRETE
23	CONCRETE	23	CONCRETE
24	CONCRETE	24	CONCRETE
25	CONCRETE	25	CONCRETE
26	CONCRETE	26	CONCRETE
27	CONCRETE	27	CONCRETE
28	CONCRETE	28	CONCRETE
29	CONCRETE	29	CONCRETE
30	CONCRETE	30	CONCRETE
31	CONCRETE	31	CONCRETE
32	CONCRETE	32	CONCRETE
33	CONCRETE	33	CONCRETE
34	CONCRETE	34	CONCRETE
35	CONCRETE	35	CONCRETE
36	CONCRETE	36	CONCRETE
37	CONCRETE	37	CONCRETE
38	CONCRETE	38	CONCRETE
39	CONCRETE	39	CONCRETE
40	CONCRETE	40	CONCRETE
41	CONCRETE	41	CONCRETE
42	CONCRETE	42	CONCRETE
43	CONCRETE	43	CONCRETE
44	CONCRETE	44	CONCRETE
45	CONCRETE	45	CONCRETE
46	CONCRETE	46	CONCRETE
47	CONCRETE	47	CONCRETE
48	CONCRETE	48	CONCRETE
49	CONCRETE	49	CONCRETE
50	CONCRETE	50	CONCRETE

**GENERAL NOTES**

DO NOT SCALE OFF THIS DRAWING. USE FIGURED DIMENSIONS ONLY. VERIFY ALL DIMENSIONS ON SITE AND RECEIVE ANY DIMENSIONS BEFORE PROCEEDING. COPYRIGHT OF THIS DRAWING AND THE DESIGN SPECIFIED REMAINS THE PROPERTY OF TONY CARO ARCHITECTURE. BUILDER TO EXAMINE SITE AND VERIFY SITE CONDITIONS PRIOR TO COMMENCING WORK. BUILDER TO CONFIRM BUILDING SETOUT PRIOR TO COMMENCING WORK. ALL ARCHITECTURAL DRAWINGS TO BE READ IN CONJUNCTION WITH OTHER ARCHITECTURAL DETAILS, SCHEDULES AND SPECIFICATIONS. ALL ARCHITECTURAL DRAWINGS AND DOCUMENTS TO BE READ IN CONJUNCTION WITH OTHER ARCHITECTURAL DETAILS, SCHEDULES AND SPECIFICATIONS.



**RIVERFRONT APARTMENTS**  
 100 CALVERT STREET  
 SYDNEY NSW 2000

DATE: 10/10/2011  
 DRAWN BY: JF  
 CHECKED BY: TC  
 SCALE: 1:100

Diagram\_GFA Areas A550