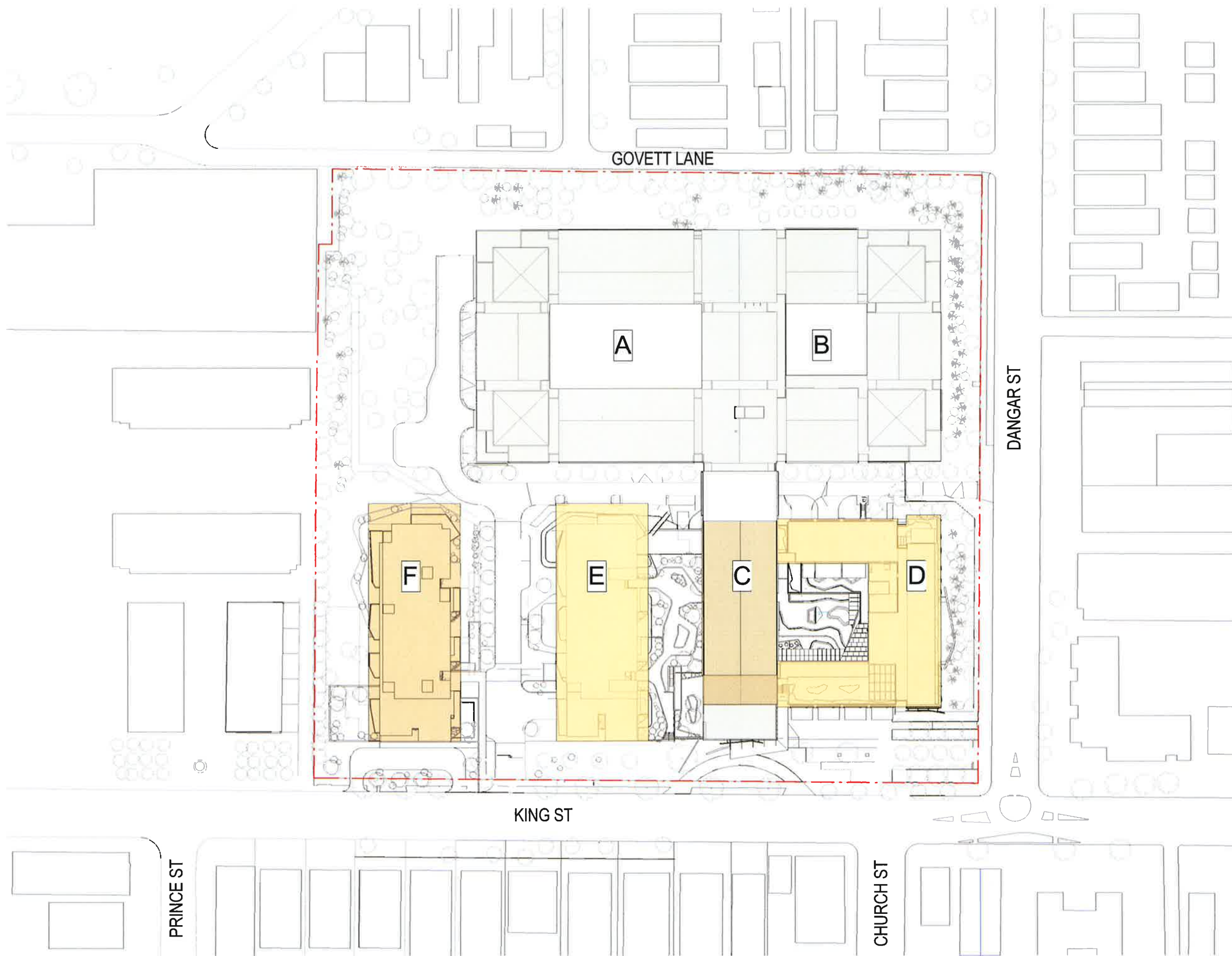


Legend:

- Existing Aged Care Facility
- Proposed Aged Care Facility
- Low Density Housing
- Low-Medium Density Housing
- Medium Density Housing
- Private Open Space
- Public Open Space
- State Transit Authority
- UNSW
- Retail
- Pedestrian Paths
- Heritage Item
- On-Street Cyclepath
- Vehicle Entrance
- Service Entrance
- Childcare Entrance
- Self Care Apartment Entrance
- Wellness Centre Entrance
- Neighbourhood Roads
- View Corridors
- Buildings





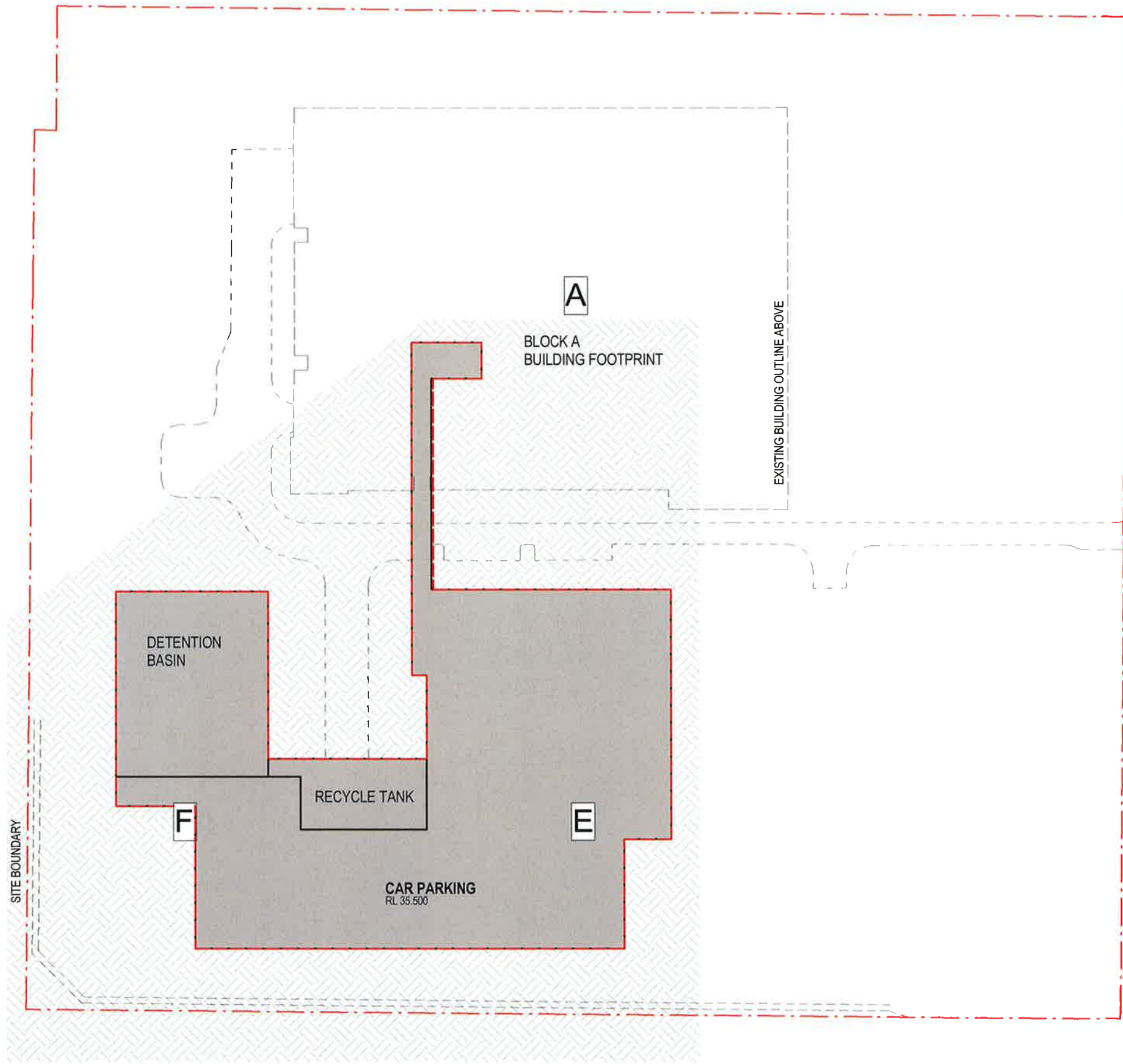


- Legend:**
- Stage 1
 - Stage 2
 - Existing Aged Care Facility



Scale 1:1000 @ A3
CONSTRUCTION STAGING PLAN
 MA1.03Rev.1 **JACKSON TEECE**
Nominated Architect for Brodie (4275)

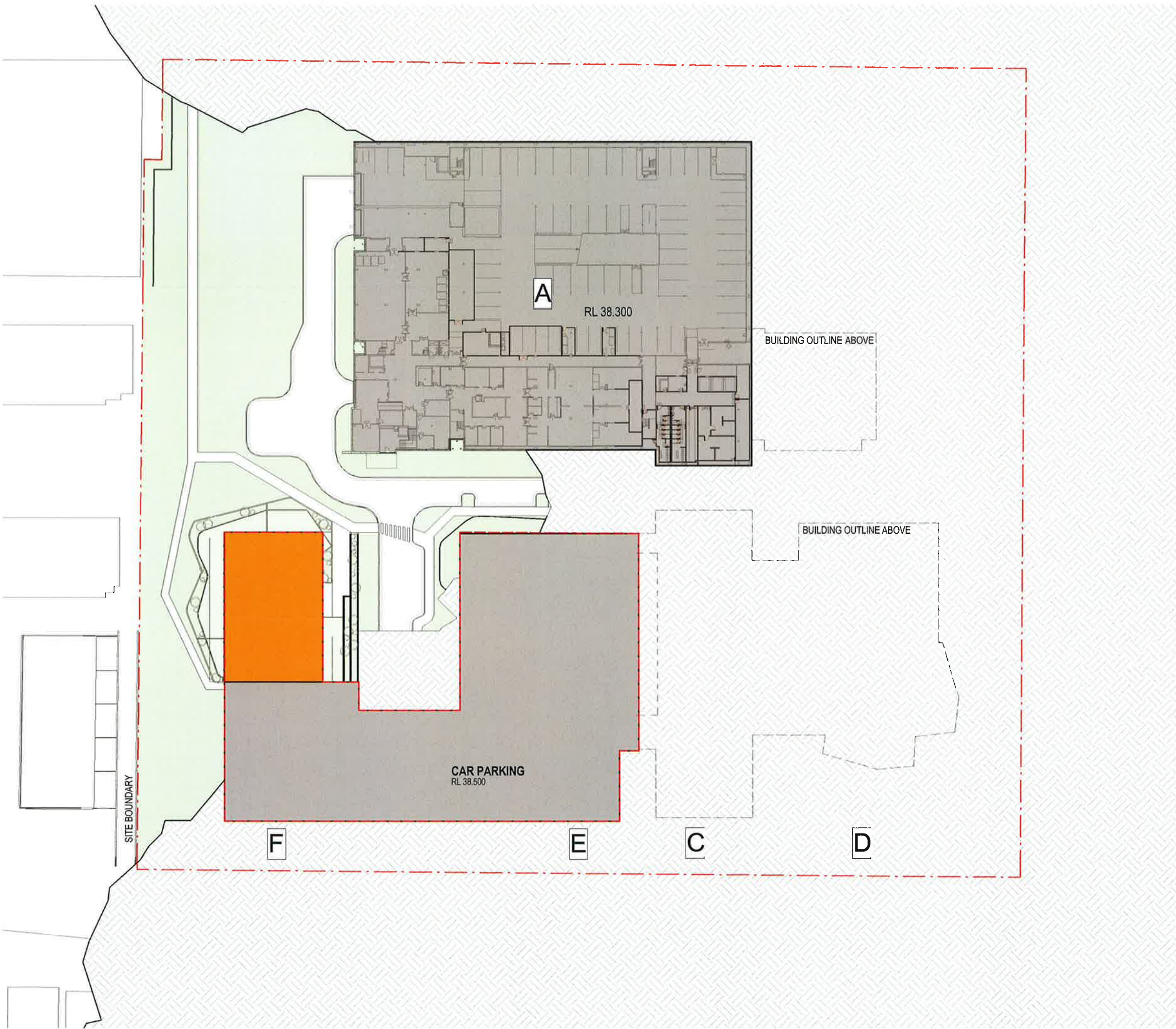




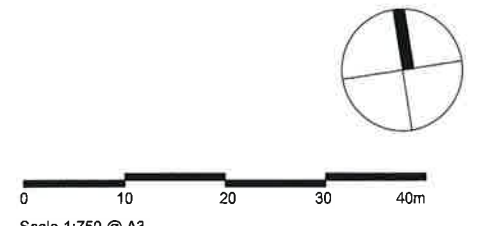
- Legend:**
- Residential Aged Care
 - Residential Health / Wellbeing
 - Adult Daycare
 - Childcare
 - Retail / Commercial
 - Foyer / Administration
 - Staff Facilities
 - Self-Care Apartments
 - Existing Aged Care Facility
 - Carpark / Plantroom / Store
 - Public Open Space
 - Residential Aged Care Re-use of Existing Building
 - Residential Health / Wellbeing Re-use of Existing Building
 - Adult Daycare / Childcare Re-use of Existing Building
 - Building floor space envelope sought for approval



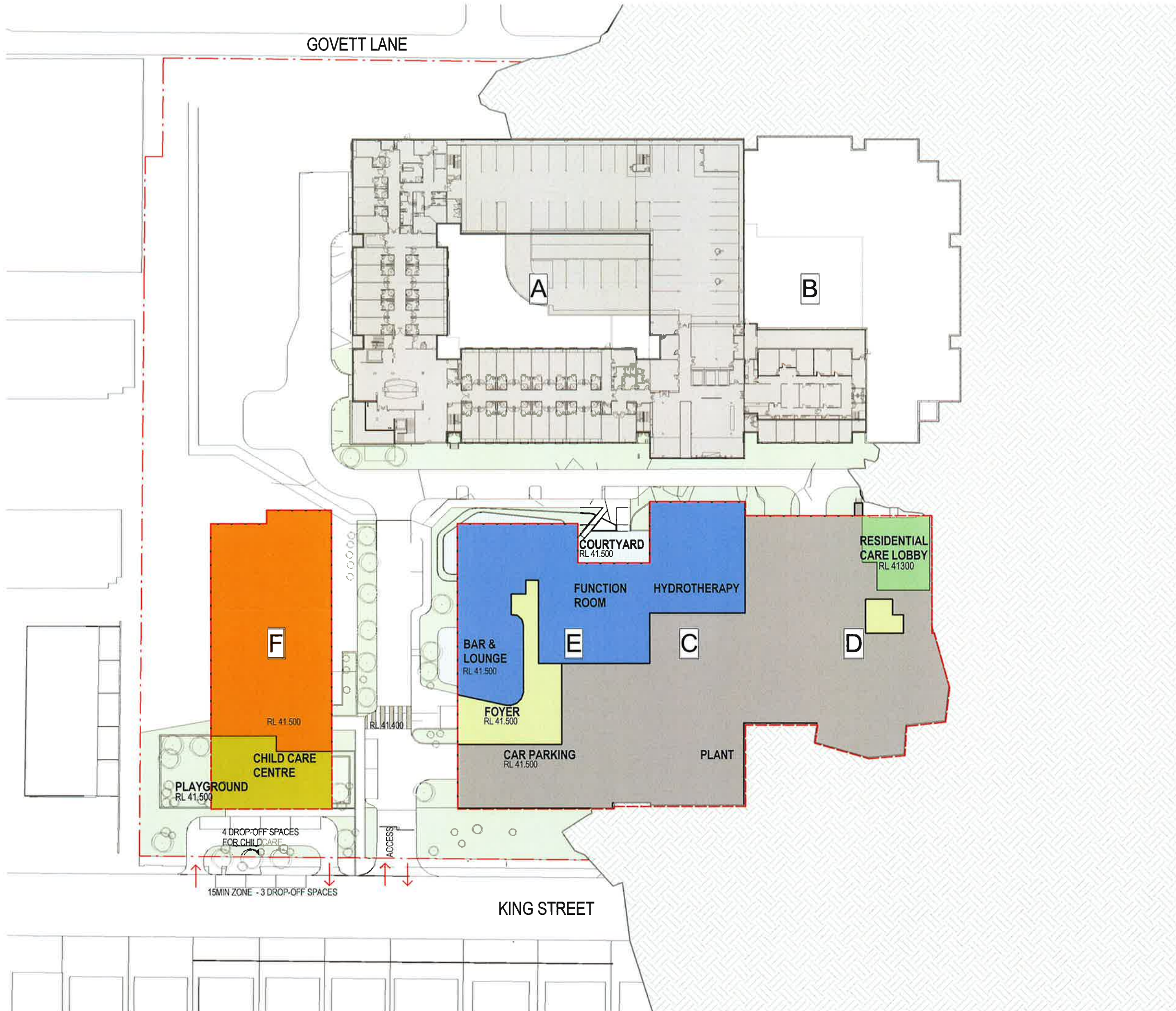
Scale 1:750 @ A3



- Legend:**
- Residential Aged Care
 - Residential Health / Wellbeing
 - Adult Daycare
 - Childcare
 - Retail / Commercial
 - Foyer / Administration
 - Staff Facilities
 - Self-Care Apartments
 - Existing Aged Care Facility
 - Carpark / Plantroom / Store
 - Public Open Space
 - Residential Aged Care
Re-use of Existing Building
 - Residential Health / Wellbeing
Re-use of Existing Building
 - Adult Daycare / Childcare
Re-use of Existing Building
 - Building floor space envelope sought for approval



GOVETT LANE



Legend:

- Residential Aged Care
- Residential Health / Wellbeing
- Adult Daycare
- Childcare
- Retail / Commercial
- Foyer / Administration
- Staff Facilities
- Self-Care Apartments
- Existing Aged Care Facility
- Carpark / Plantroom / Store
- Public Open Space
- Residential Aged Care Re-use of Existing Building
- Residential Health / Wellbeing Re-use of Existing Building
- Adult Daycare / Childcare Re-use of Existing Building
- Building floor space envelope sought for approval

F

A

B

COURTYARD
RL 41.500

FUNCTION ROOM

HYDROTHERAPY

RESIDENTIAL CARE LOBBY
RL 41.300

BAR & LOUNGE
RL 41.500

E

C

D

FOYER
RL 41.500

CAR PARKING
RL 41.500

PLANT

PLAYGROUND
RL 41.500

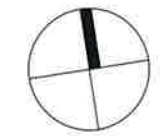
CHILD CARE CENTRE

4 DROP-OFF SPACES FOR CHILDCARE

15MIN ZONE - 3 DROP-OFF SPACES

ACCESS

KING STREET



0 10 20 30 40m

Scale 1:750 @ A3

LOWER GROUND LEVEL FLOOR PLAN

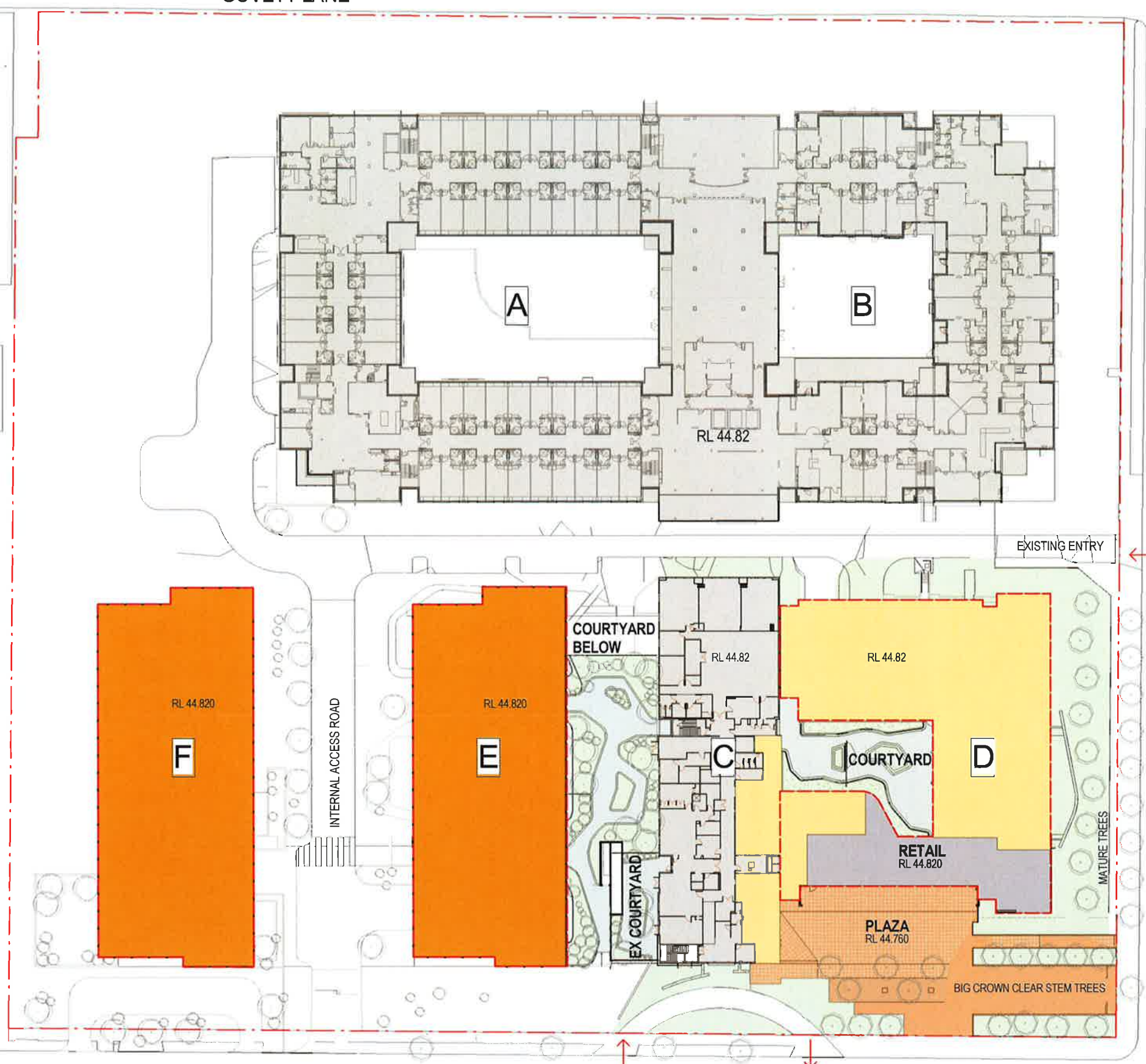
MA2.03Rev.1 **JACKSON TEECE**

Registered Architect Ian Brade (4273)

GOVETT LANE

DANGAR STREET

KING STREET



Legend:

- Residential Aged Care
- Residential Health / Wellbeing
- Adult Daycare
- Childcare
- Retail / Commercial
- Foyer / Administration
- Staff Facilities
- Self-Care Apartments
- Existing Aged Care Facility
- Carpark / Plantroom / Store
- Public Open Space
- Residential Aged Care Re-use of Existing Building
- Residential Health / Wellbeing Re-use of Existing Building
- Adult Daycare / Childcare Re-use of Existing Building
- Building floor space envelope sought for approval



Scale 1:750 @ A3

GROUND LEVEL FLOOR PLAN

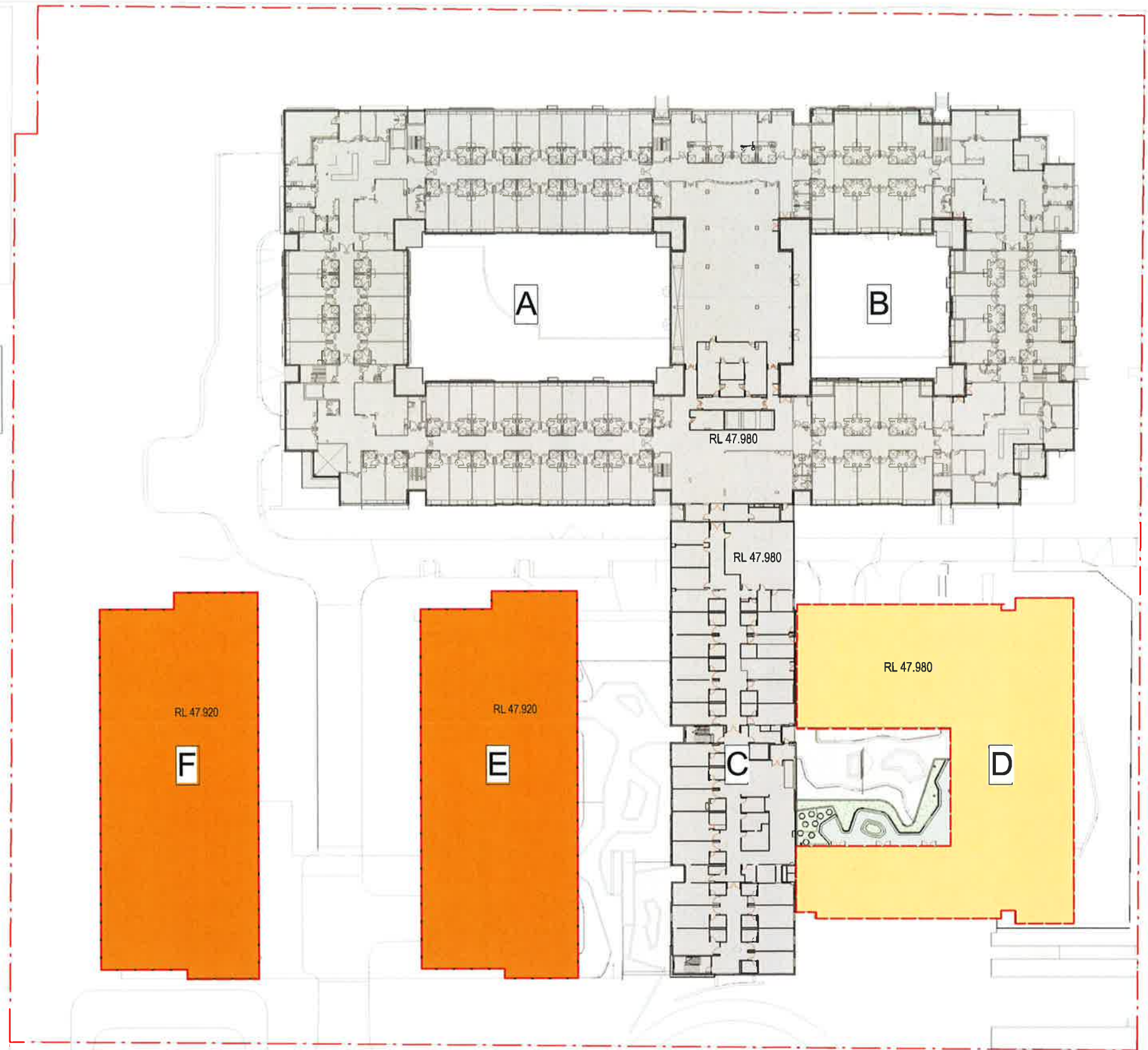
MA2.04Rev.1 **JACKSON TEECE**

Non-registered Architect Ian Brodie (4273)

GOVETT LANE

DANGAR STREET

KING STREET



Legend:

- Residential Aged Care
- Residential Health / Wellbeing
- Adult Daycare
- Childcare
- Retail / Commercial
- Foyer / Administration
- Staff Facilities
- Self-Care Apartments
- Existing Aged Care Facility
- Carpark / Plantroom / Store
- Public Open Space
- Residential Aged Care Re-use of Existing Building
- Residential Health / Wellbeing Re-use of Existing Building
- Adult Daycare / Childcare Re-use of Existing Building
- Building floor space envelope sought for approval



Scale 1:750 @ A3

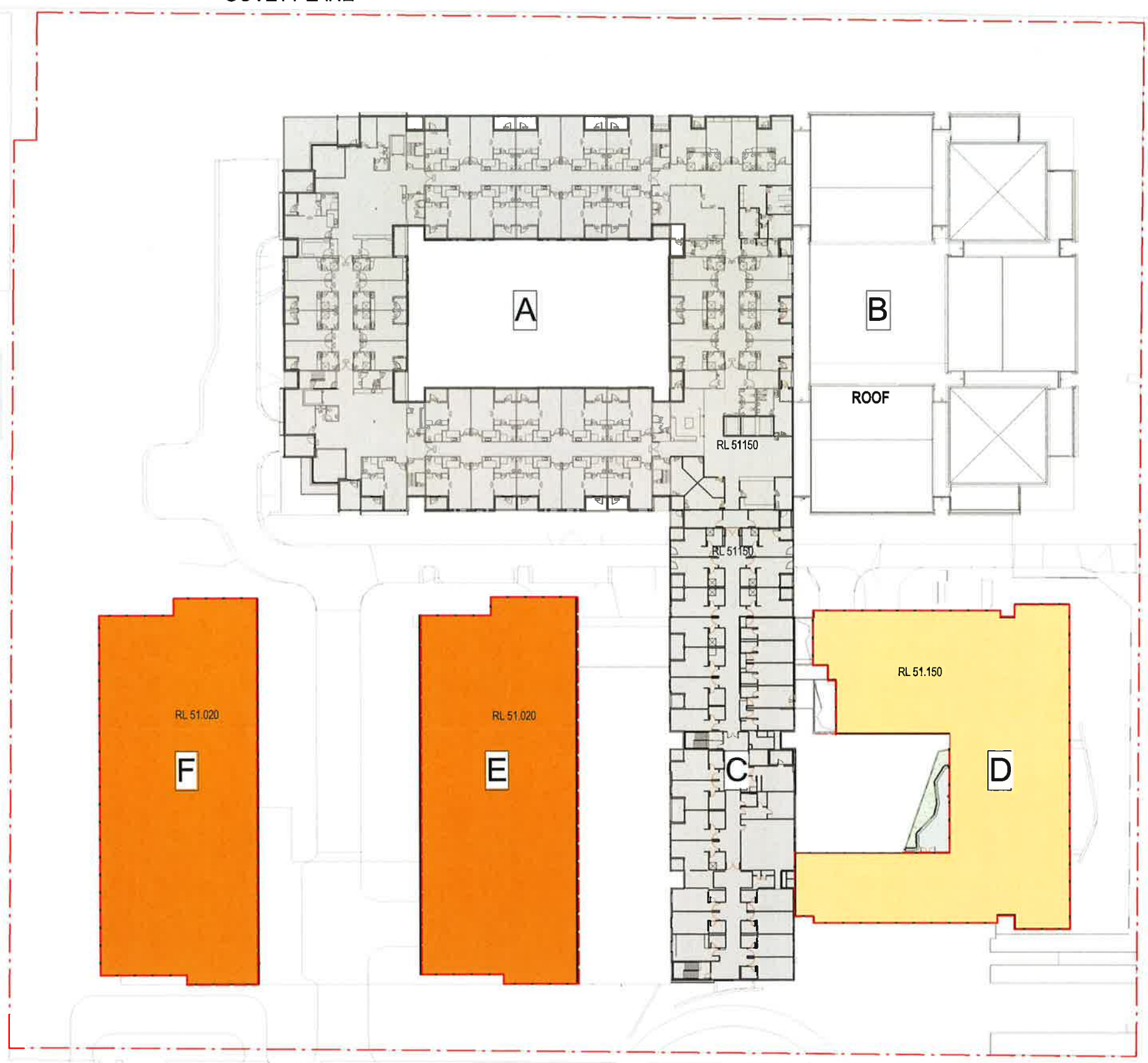
LEVEL 1 FLOOR PLAN

MA2.05Rev.1 **JACKSON TEECE**
Nominated Architect in Grade (4275)

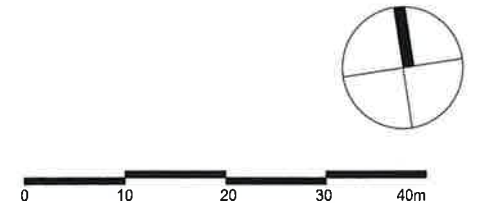
GOVETT LANE

DANGAR STREET

KING STREET



- Legend:**
- Residential Aged Care
 - Residential Health / Wellbeing
 - Adult Daycare
 - Childcare
 - Retail / Commercial
 - Foyer / Administration
 - Staff Facilities
 - Self-Care Apartments
 - Existing Aged Care Facility
 - Carpark / Plantroom / Store
 - Public Open Space
 - Residential Aged Care Re-use of Existing Building
 - Residential Health / Wellbeing Re-use of Existing Building
 - Adult Daycare / Childcare Re-use of Existing Building
 - Building floor space envelope sought for approval

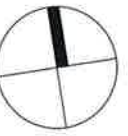


GOVETT LANE

DANGAR STREET

KING STREET

- Legend:**
- Residential Aged Care
 - Residential Health / Wellbeing
 - Adult Daycare
 - Childcare
 - Retail / Commercial
 - Foyer / Administration
 - Staff Facilities
 - Self-Care Apartments
 - Existing Aged Care Facility
 - Carpark / Plantroom / Store
 - Public Open Space
 - Residential Aged Care Re-use of Existing Building
 - Residential Health / Wellbeing Re-use of Existing Building
 - Adult Daycare / Childcare Re-use of Existing Building
 - Building floor space envelope sought for approval



Scale 1:750 @ A3

LEVEL 3 FLOOR PLAN

MA2.07Rev.1 **JACKSON TEECE**

Registered Architect Ian Brude (4273)

GOVETT LANE

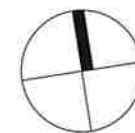
DANGAR STREET

KING STREET



Legend:

- Residential Aged Care
- Residential Health / Wellbeing
- Adult Daycare
- Childcare
- Retail / Commercial
- Foyer / Administration
- Staff Facilities
- Self-Care Apartments
- Existing Aged Care Facility
- Carpark / Plantroom / Store
- Public Open Space
- Residential Aged Care Re-use of Existing Building
- Residential Health / Wellbeing Re-use of Existing Building
- Adult Daycare / Childcare Re-use of Existing Building
- Building floor space envelope sought for approval



Scale 1:750 @ A3

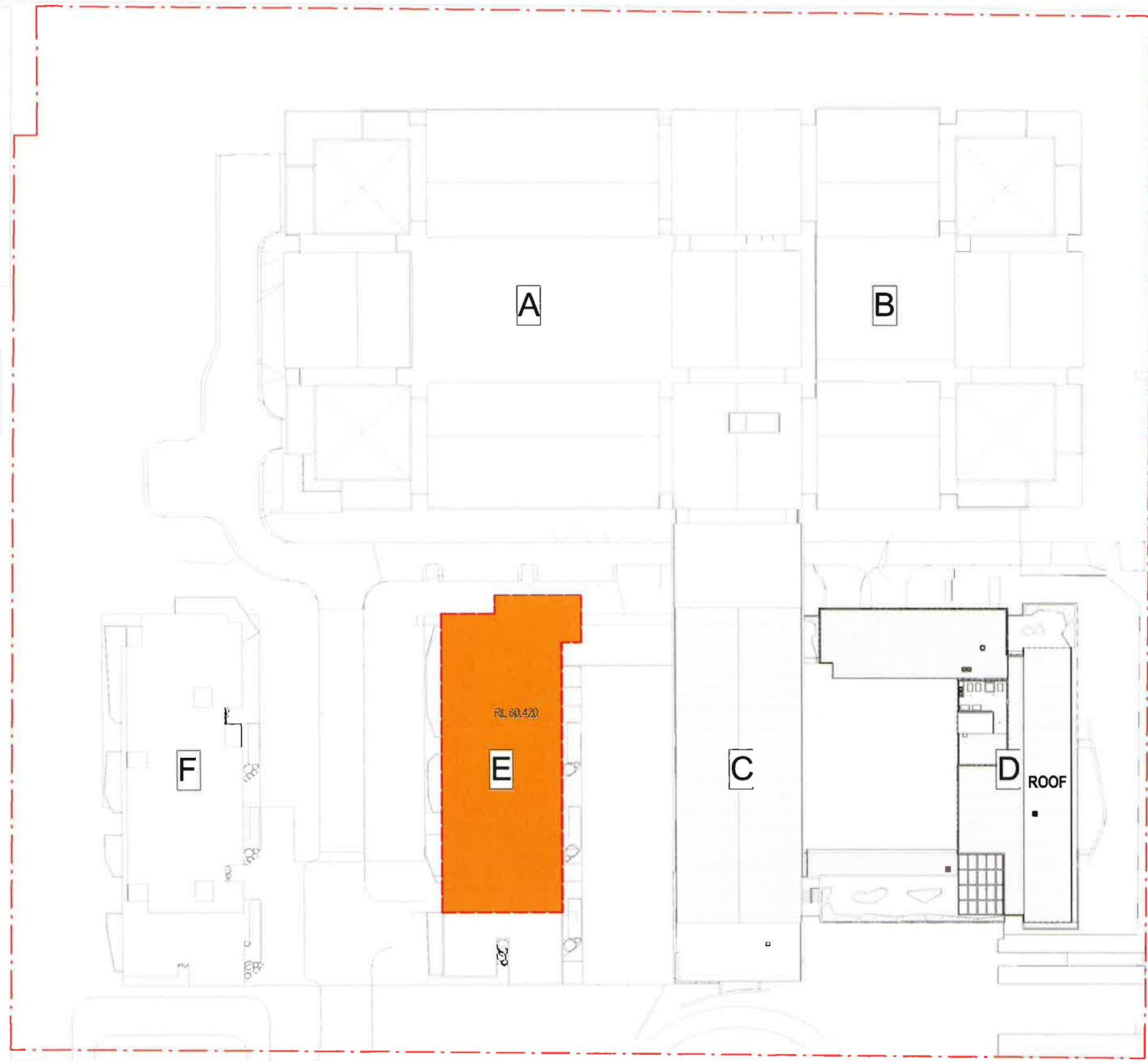
LEVEL 4 FLOOR PLAN

MA2.08Rev.1 **JACKSON TEECE**
Nominated Architect (No. 4275)

GOVETT LANE

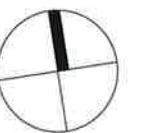
DANGAR STREET

KING STREET



Legend:

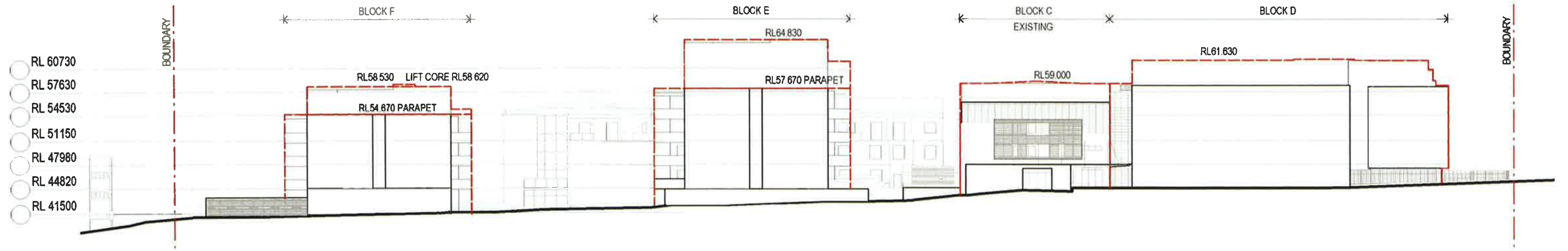
- Residential Aged Care
- Residential Health / Wellbeing
- Adult Daycare
- Childcare
- Retail / Commercial
- Foyer / Administration
- Staff Facilities
- Self-Care Apartments
- Existing Aged Care Facility
- Carpark / Plantroom / Store
- Public Open Space
- Residential Aged Care Re-use of Existing Building
- Residential Health / Wellbeing Re-use of Existing Building
- Adult Daycare / Childcare Re-use of Existing Building
- Building floor space envelope sought for approval



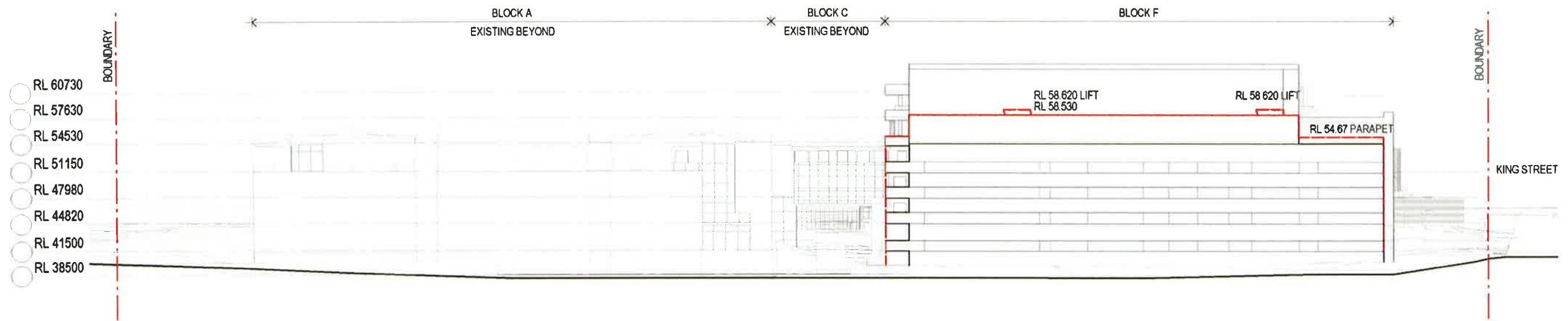
Scale 1:750 @ A3

LEVEL 5 FLOOR PLAN

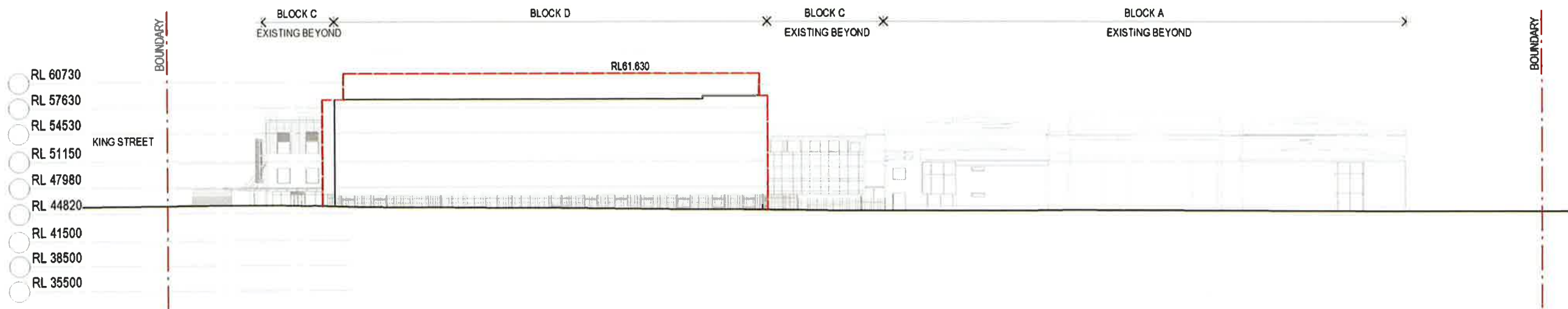
MA2.09Rev.1 **JACKSON TEECE**
Registered Architect (No. 4273)



KING STREET ELEVATION



WEST ELEVATION



DANGAR STREET ELEVATION



Scale 1:750 @ A3

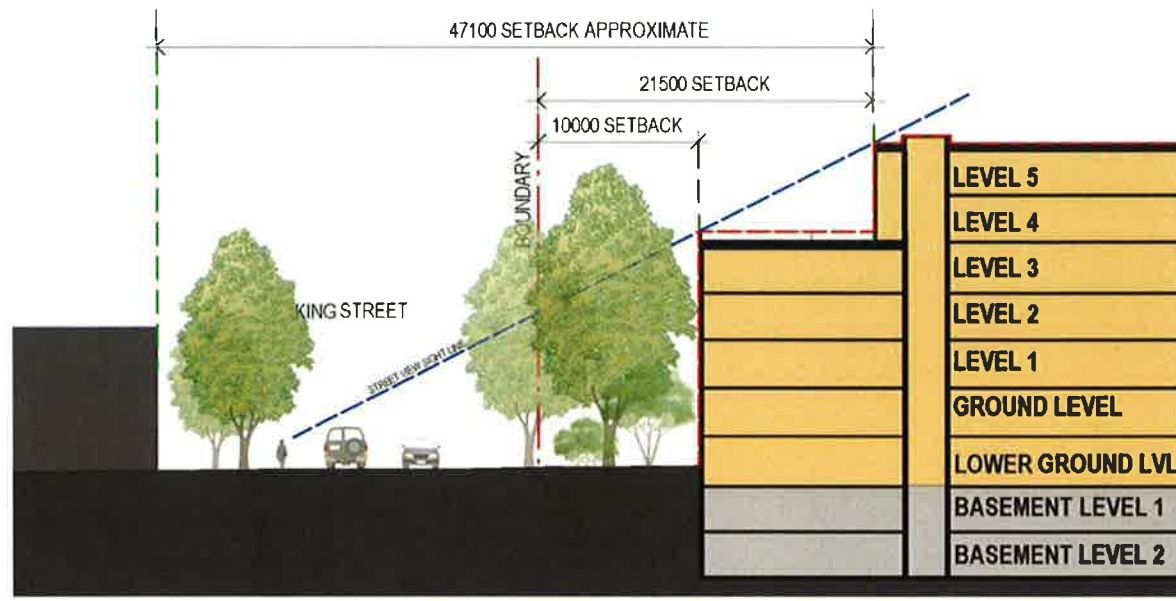
ENVELOPE ELEVATION

MA2.10Rev.1 **JACKSON TEECE**

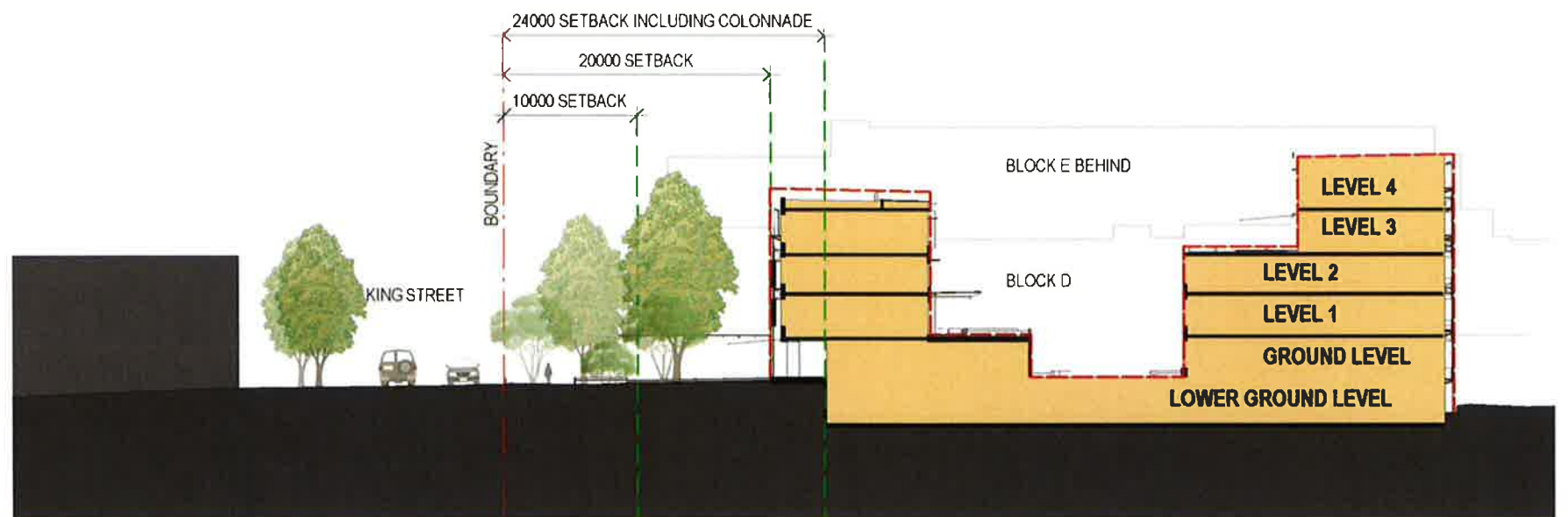
Marineholo Architect Ion Brodie (4275)



SECTION KEY PLAN



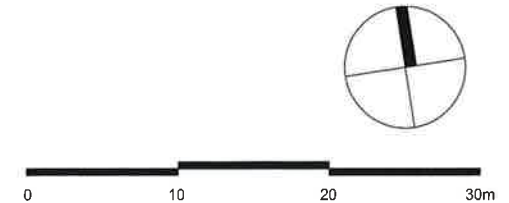
SECTION 1

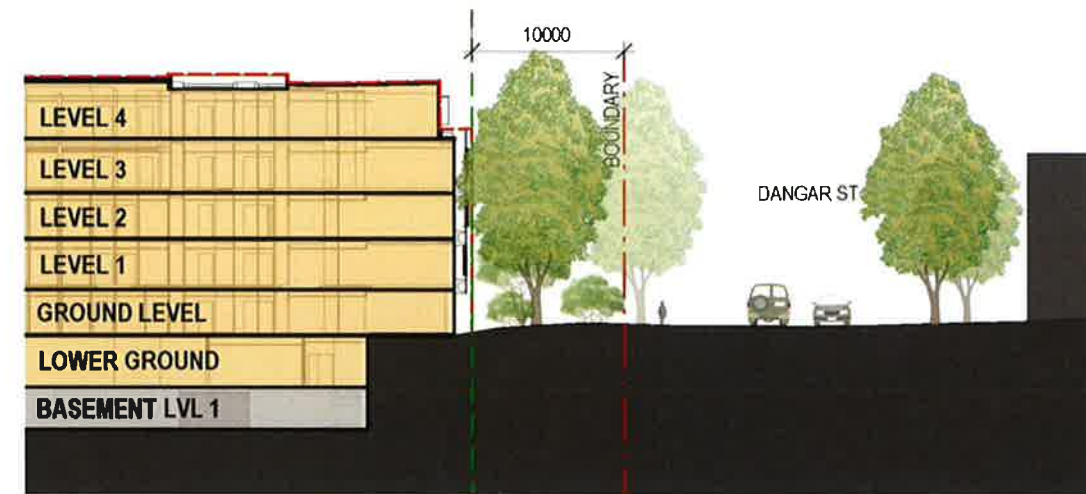
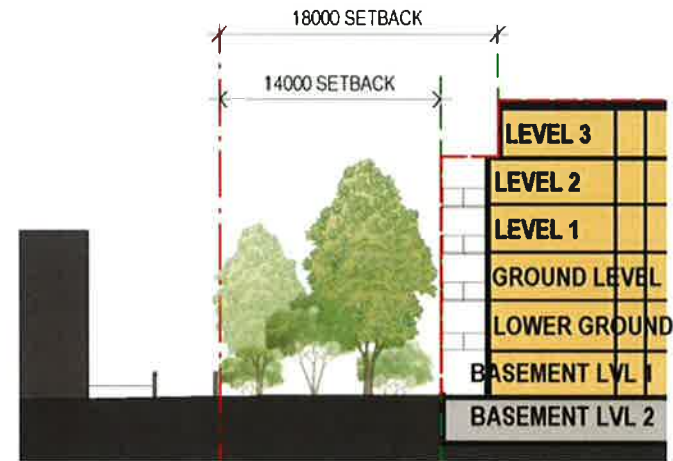


SECTION 2

* NOTE: TREES SHOWN AS PER LANDSCAPE PLANS WHEN FULLY MATURE

- Legend:**
- Proposed Residential Aged Care
 - Existing Residential Aged Care
 - Proposed Envelope





* NOTE: TREES SHOWN AS PER LANDSCAPE PLANS WHEN FULLY MATURE

- Legend:**
- Proposed Residential Aged Care
 - Existing Residential Aged Care
 - Proposed Envelope

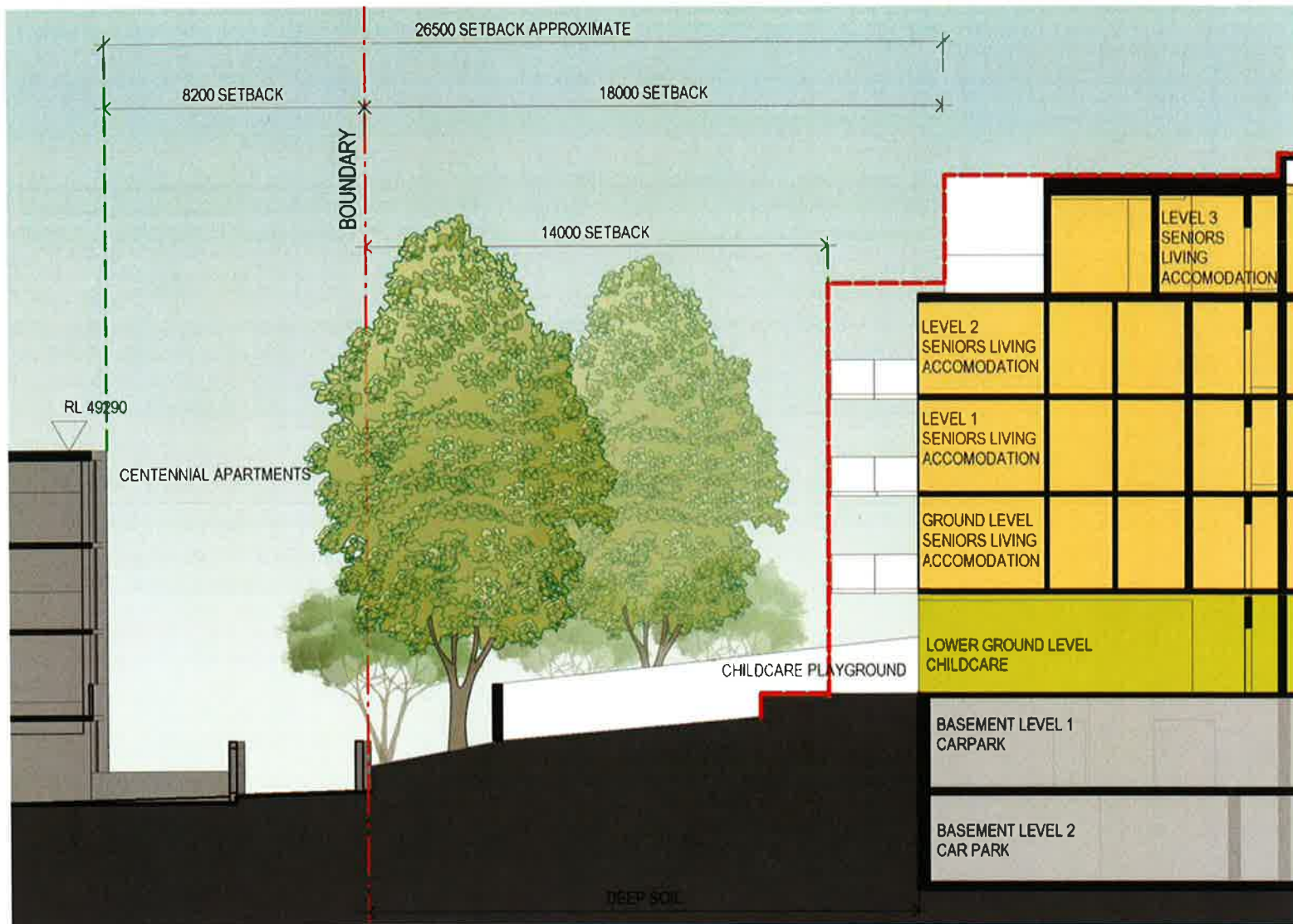


Scale 1:500 @ A3

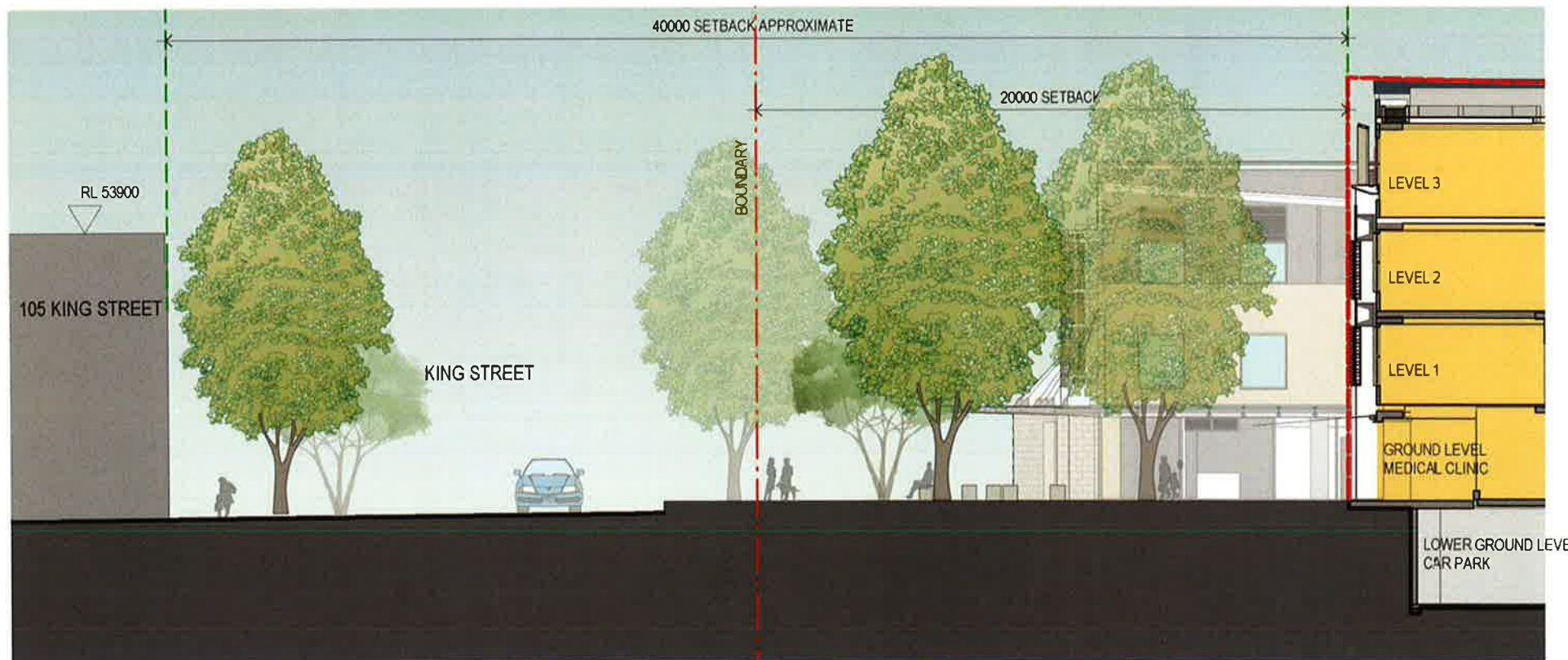
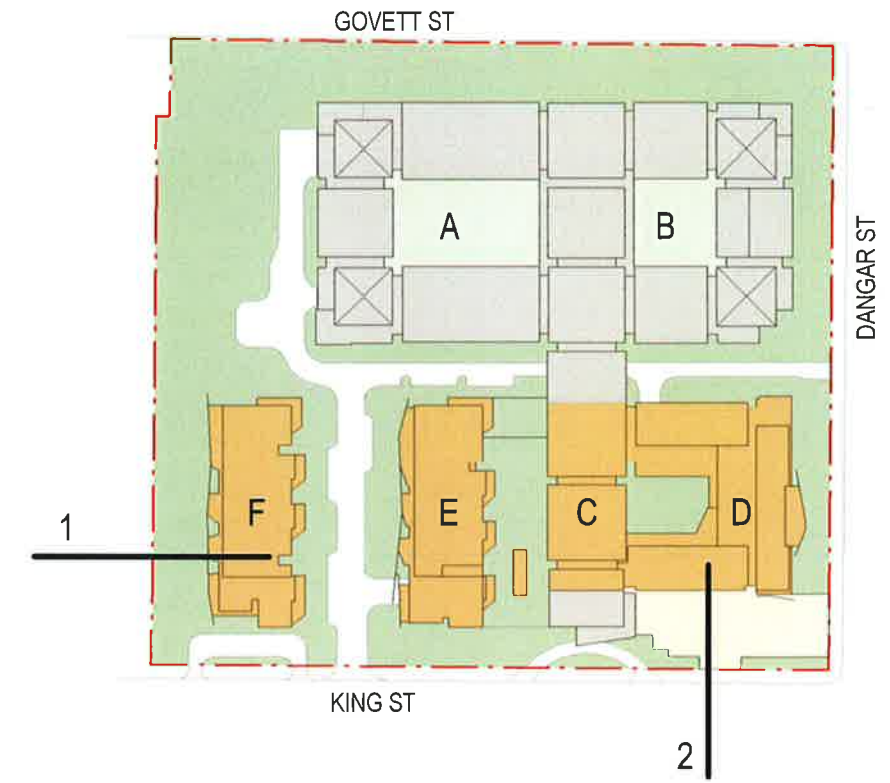
SITE SETBACKS

MA3.03Rev.1 **JACKSON TEECE**

Non-rated Architect Ian Bradie (4275)



SECTION 1



SECTION 2

* NOTE: TREES SHOWN AS PER LANDSCAPE PLANS WHEN FULLY MATURE

Legend:

--- Proposed scheme envelope

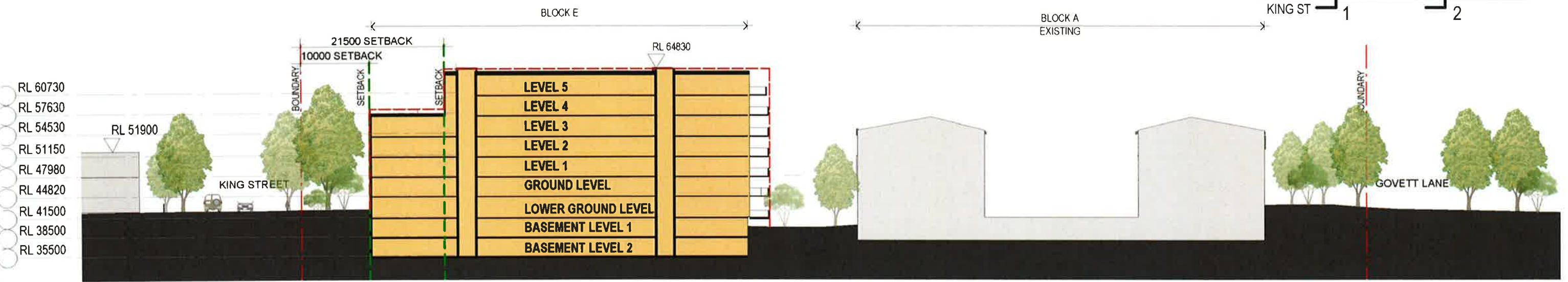
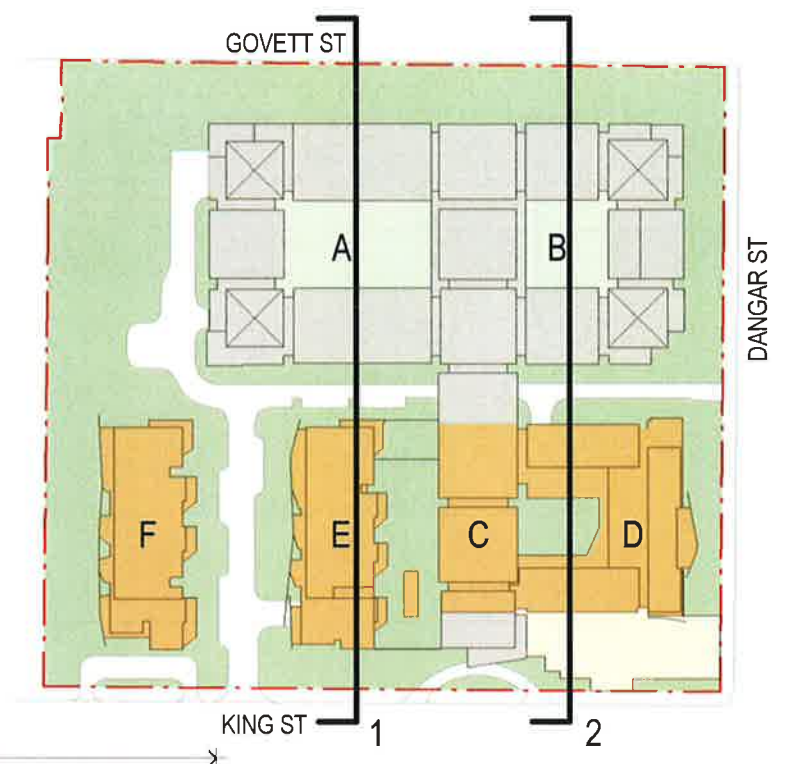


Scale 1:200 @ A3

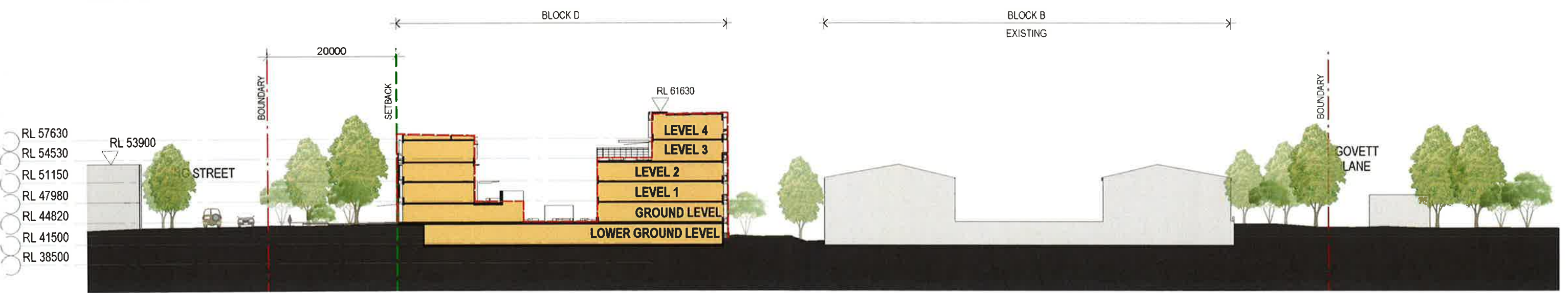
DETAILED SECTIONS

MA3.04Rev.1 **JACKSON TEECE**

Warratd Architect Ian Brodie (4275)



SECTION 1

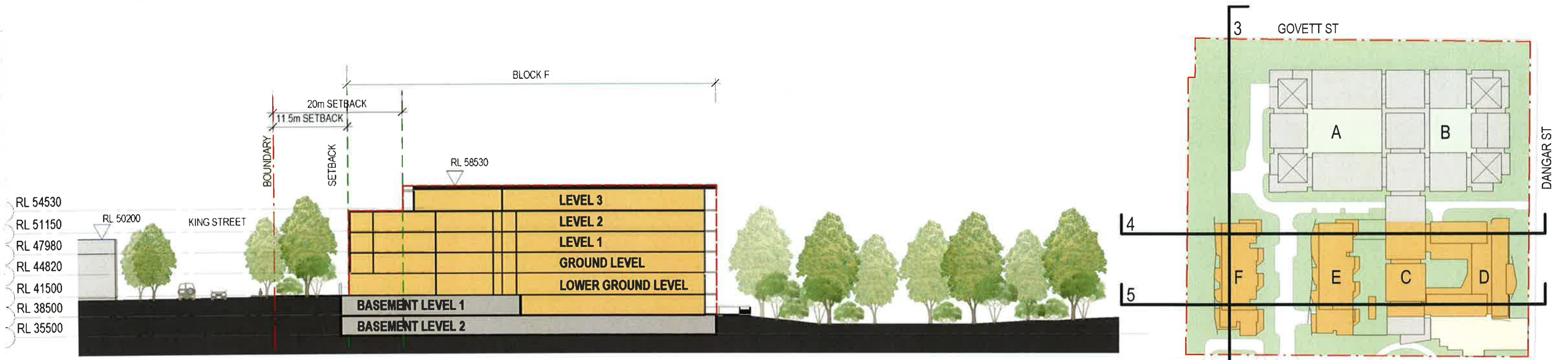


SECTION 2

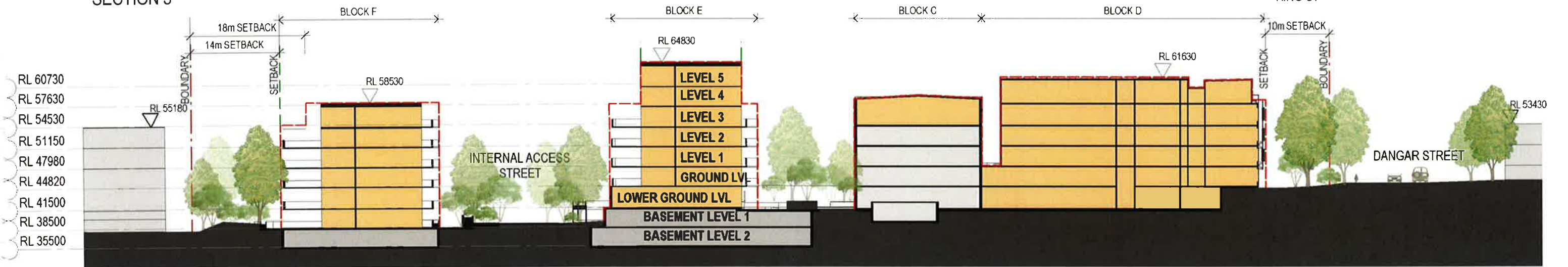
* NOTE: TREES SHOWN AS PER LANDSCAPE PLANS WHEN FULLY MATURE

- Legend:**
- Proposed Residential Aged Care
 - Existing Residential Aged Care
 - Proposed Envelope

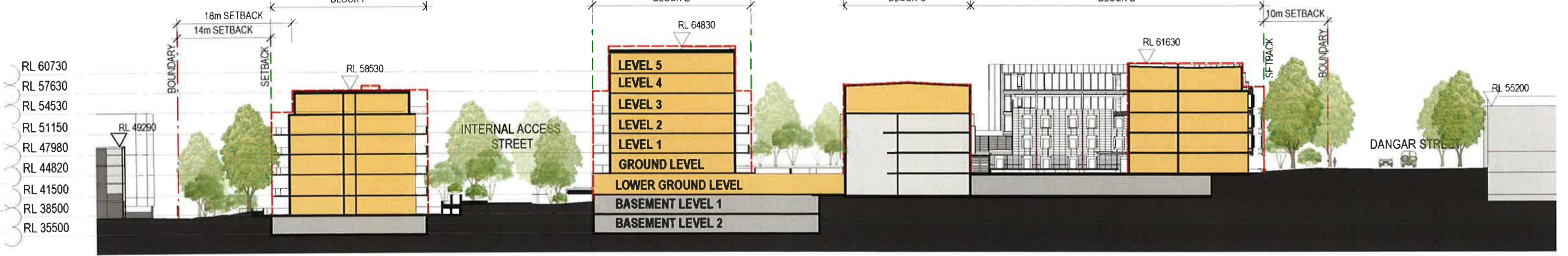




SECTION 3



SECTION 4



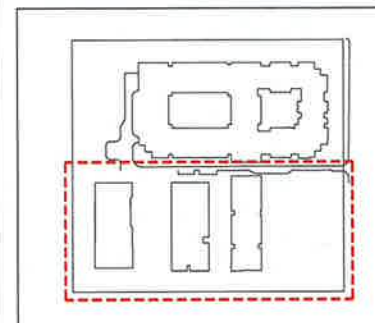
SECTION 5

* NOTE: TREES SHOWN AS PER LANDSCAPE PLANS WHEN FULLY MATURE

Legend:

- Proposed Residential Aged Care
- Existing Residential Aged Care
- Proposed Envelope





KEY PLAN

| DATE | DESCRIPTION | REV |
|----------|---------------------------|-----|
| 27/01/15 | GRANT PROJECT APPLICATION | A |
| 01/04/16 | PROJECT APPLICATION | B |
| | | |
| | | |
| | | |
| | | |
| | | |
| | | |
| | | |
| | | |

REVISIONS

SIR MOSES MONTEFIORE
 JEWISH HOME, RANDWICK

CLIENT

JACKSON TEECE

LOT 1, PIER 8-9, 23 HICKSON ROAD, WALSH BAY, NSW 2000

ARCHITECT

MONTEFIORE, RANDWICK
 STAGE 2

PROJECT

PROJECT APPLICATION

PURPOSE OF DRAWING

LANDSCAPE PLAN

DRAWING TITLE



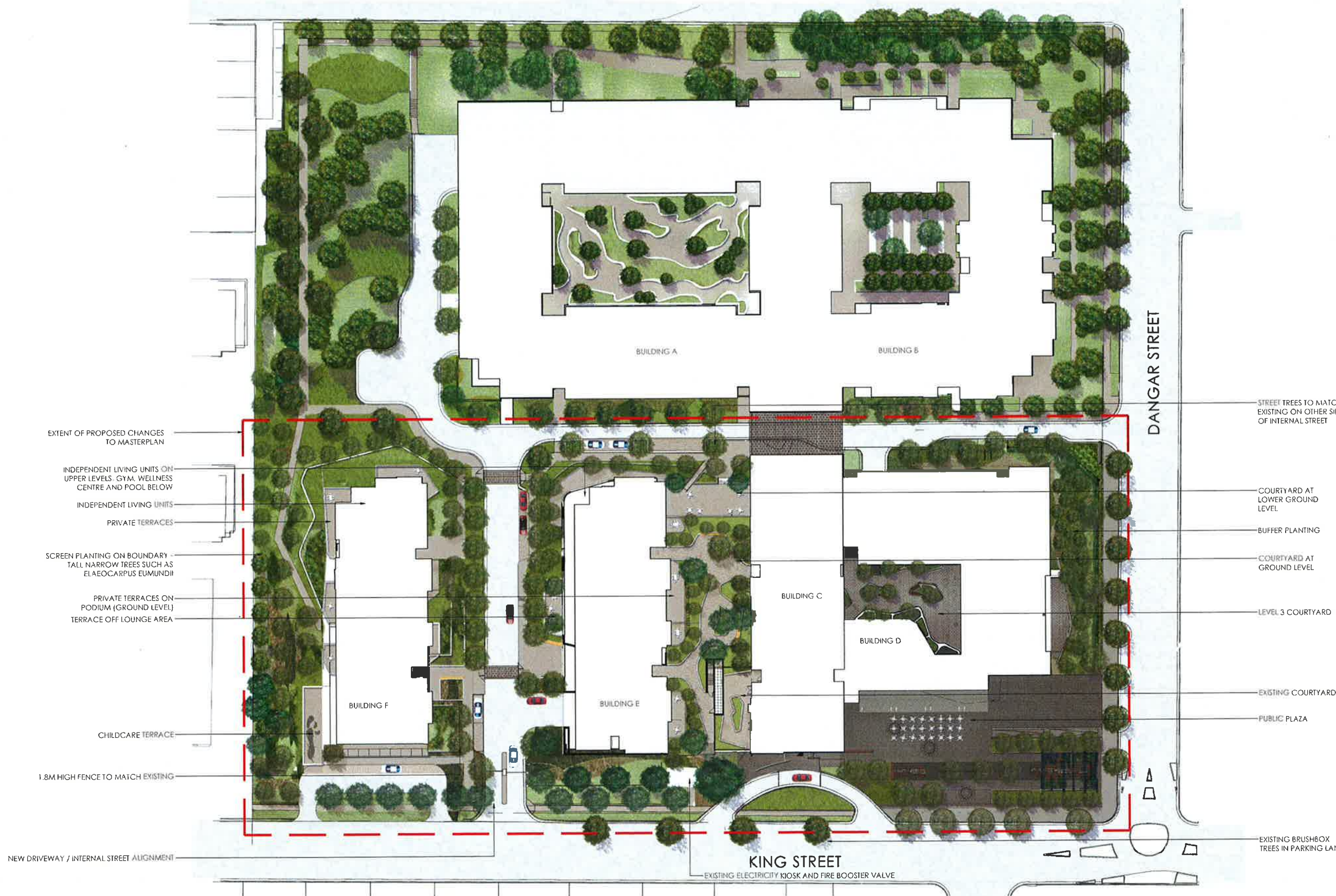
NORTH

| | | | |
|-------------|------------|-------------|----|
| SCALE | 1:400 @ A1 | DRAWN BY | KV |
| DATE | 01/04/2016 | CHECKED BY | KL |
| JOB NO. | S15-032 | APPROVED BY | KS |
| DRAWING NO. | | REVISION | |

PA -L-100

B

DRAWING INFORMATION



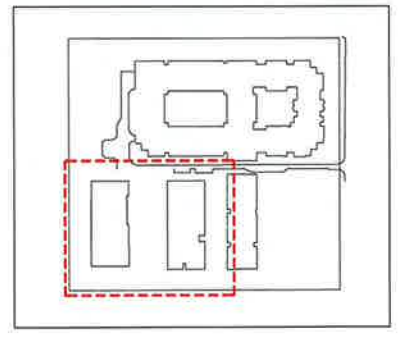
- EXTENT OF PROPOSED CHANGES TO MASTERPLAN
- INDEPENDENT LIVING UNITS ON UPPER LEVELS. GYM, WELLNESS CENTRE AND POOL BELOW
- INDEPENDENT LIVING UNITS
- PRIVATE TERRACES
- SCREEN PLANTING ON BOUNDARY - TALL NARROW TREES SUCH AS ELAEOCARPUS EUMUNDII
- PRIVATE TERRACES ON PODIUM (GROUND LEVEL) TERRACE OFF LOUNGE AREA
- CHILDCARE TERRACE
- 1.8M HIGH FENCE TO MATCH EXISTING

- STREET TREES TO MATCH EXISTING ON OTHER SIDE OF INTERNAL STREET
- COURTYARD AT LOWER GROUND LEVEL
- BUFFER PLANTING
- COURTYARD AT GROUND LEVEL
- LEVEL 3 COURTYARD
- EXISTING COURTYARD
- PUBLIC PLAZA
- EXISTING BRUSHBOX TREES IN PARKING LANE

KING STREET
 EXISTING ELECTRICITY KIOSK AND FIRE BOOSTER VALVE

DANGAR STREET

NEW DRIVEWAY / INTERNAL STREET ALIGNMENT



KEY PLAN

| DATE | DESCRIPTION | REV |
|----------|-----------------------------|-----|
| 21/07/15 | DRAWING PROJECT APPLICATION | A |
| 01/04/16 | PROJECT APPLICATION | B |
| | | |
| | | |
| | | |
| | | |
| | | |
| | | |
| | | |
| | | |

REVISIONS

SIR MOSES MONTEFIORE
 JEWISH HOME, RANDWICK
CLIENT
JACKSON TEECE
 LOT 1, PIER 8-9, 23 HICKSON ROAD, WALSH BAY, NSW 2000

ARCHITECT
 MONTEFIORE, RANDWICK
 STAGE 2

PROJECT
 PROJECT APPLICATION

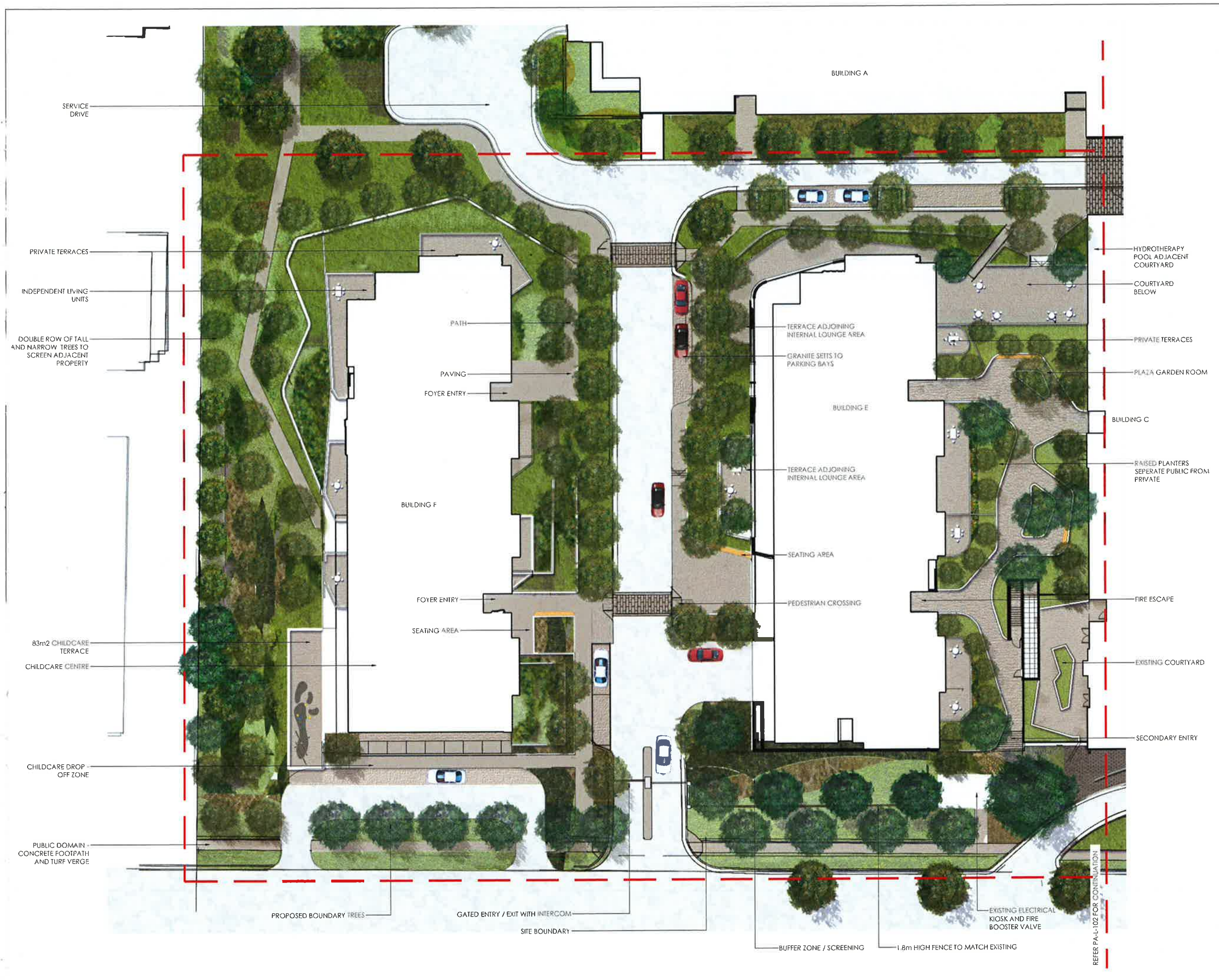
PURPOSE OF DRAWING
 LANDSCAPE PLAN
 DETAIL PLAN (WEST)

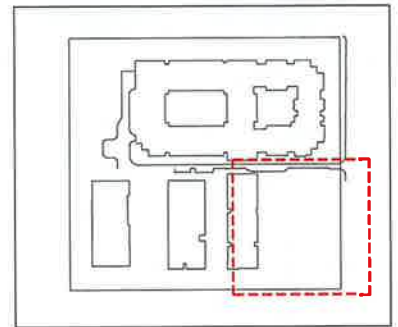


SCALE 1:200 @ A1

| DATE | CHECKED BY | DRAWN BY | KV |
|-------------|-------------|----------|----|
| 01/04/2016 | KL | KV | |
| JOB NO. | APPROVED BY | KS | |
| S15-032 | | | |
| DRAWING NO. | REVISION | | |

DRAWING INFORMATION
 PA -L-101 B





KEY PLAN

| DATE | DESCRIPTION | REV |
|----------|--------------------------|-----|
| 21/06/15 | DRAW PROJECT APPLICATION | A |
| 01/04/16 | PROJECT APPLICATION | B |
| | | |
| | | |
| | | |
| | | |
| | | |
| | | |
| | | |
| | | |

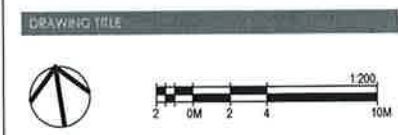
REVISIONS

SIR MOSES MONTEFIORE
 JEWISH HOME, RANDWICK
CLIENT
JACKSON TEECE
 LOT 1, PIER 8-9, 23 HICKSON ROAD, WALSH BAY, NSW 2000

ARCHITECT
 MONTEFIORE, RANDWICK
 STAGE 2

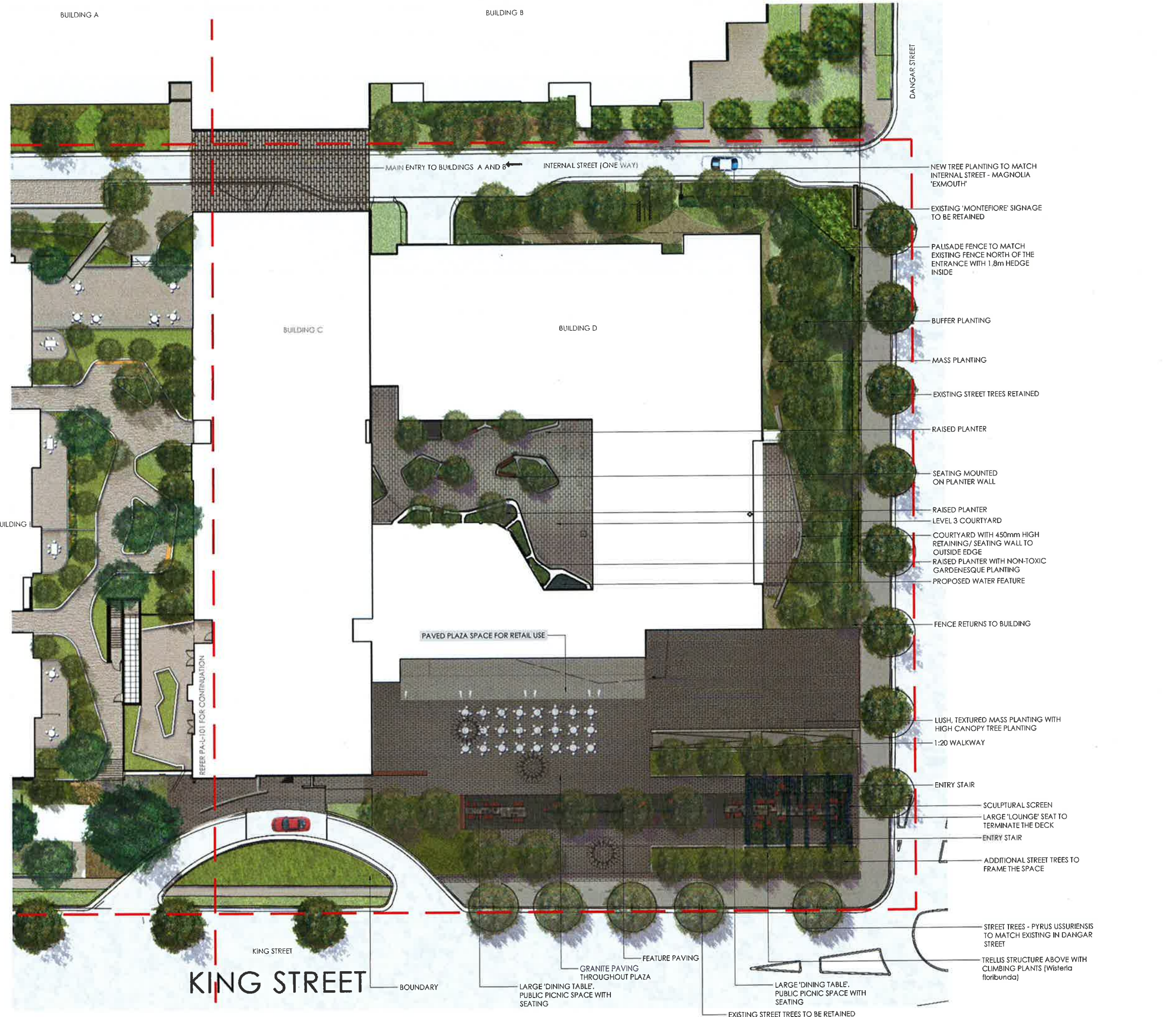
PROJECT
 PROJECT APPLICATION

PURPOSE OF DRAWING
 LANDSCAPE PLAN
 DETAIL PLAN (EAST)



DRAWING INFORMATION

| | | | |
|-------------|------------|-------------|----|
| SCALE | 1:200 @ A1 | DRAWN BY | KV |
| DATE | 01/04/2016 | CHECKED BY | KL |
| JOB NO. | S15-032 | APPROVED BY | KS |
| DRAWING NO. | PA -L-102 | REVISION | B |



INDICATIVE PLANT SCHEDULE
Rev A 21.08.15

| STREETS | | | | | |
|------------------------------------|--|-------------------|------|---------|-----------------|
| Symbol | Species | Common Name | Size | Spacing | Height / Spread |
| Trees | | | | | |
| Lc | <i>Lophostemon confertus</i> | Bushbox | 200L | 8m | 2.5m / 1.2m |
| Pu | <i>Pyrus ussuriensis</i> | Manchurian Pear | 400L | 8m | 3.5m / 1.6m |
| Shrubs | | | | | |
| Psm | <i>Syzygium Select Form</i> | Dwarf Lilly Pilly | 25L | 900mm | 1.5m / 800mm |
| Perennials and Groundcovers | | | | | |
| Dg | <i>Dietes grandiflora</i> | Dietes | 5L | 400mm | 500mm / 300mm |
| Dx | <i>Doranythes excelsa</i> | Gymea Lily | 25L | 800mm | 600mm / 500mm |
| Gt | <i>Gazania lanetosum 'Silver Beauty'</i> | Silver Gazania | 2.5L | 300mm | 100mm / 250mm |
| Ot | <i>Osteospermum hutchinsonii</i> | African Daisy | 2.5L | 400mm | 200mm / 300mm |
| Pu | <i>Phormium tenax 'Purplea'</i> | Purple Flax | 25L | 900mm | 1.0m / 1.0m |

| INTERNAL STREETS | | | | | |
|------------------|---------------------------|--------------------|------|---------|-----------------|
| Symbol | Species | Common Name | Size | Spacing | Height / Spread |
| Trees | | | | | |
| Mk | <i>Magnolia 'Ermouth'</i> | Evergreen Magnolia | 200L | 8m | 2.5m / 1.2m |

| COURTYARDS ON STRUCTURE | | | | | |
|-------------------------|---|--------------------------|------|---------|-----------------|
| Symbol | Species | Common Name | Size | Spacing | Height / Spread |
| Trees | | | | | |
| Pk | <i>Lagerstroemia indica</i> | Crape Myrtle | 200L | 6m | 2.5m / 1.2m |
| Mt | <i>Magnolia 'Little Gem'</i> | Dwarf Evergreen Magnolia | 200L | 4m | 2.5m / 1.2m |
| Pr | <i>Plumeria rubra 'acutifolia'</i> | Frangipani | 100L | 8m | 2m / 1.5m |
| Pa | <i>Pyrus calleryana 'Bradford'</i> | Callery's Pear | 200L | 5m | 3.5m / 2.5m |
| Shrubs | | | | | |
| Cq | <i>Camellia sasanqua 'Jennifer Susan'</i> | Pink Camellia | 45L | 600mm | 1.5m / 800mm |
| FT | <i>Fuchsia 'Thalia'</i> | Shrub Fuchsia | 5L | 450mm | 400mm / 300mm |
| Gm | <i>Gardenia augusta 'Magnifica'</i> | Gardenia | 25L | 600mm | 600mm / 500mm |
| Ma | <i>Murraya paniculata</i> | Orange Jessamine | 25L | 600mm | 600mm / 500mm |
| Ro | <i>Rosmarinus officinalis</i> | Rosemary | 5L | 500mm | 400mm / 200mm |

| | | | | | |
|------------------------------------|--|-------------------|------|-------|---------------|
| Perennials and Groundcovers | | | | | |
| Ac | <i>Anthrodium cinctum</i> | Renga Renga Lily | 5L | 400mm | 350mm / 250mm |
| Ae | <i>Aspidistra elatior</i> | Cast Iron Plant | 5L | 400mm | 400mm / 250mm |
| Gm | <i>Clivia miniata</i> | Kaffir Lily | 2.5L | 500mm | 100mm / 200mm |
| Ge | <i>Colocasia esculenta 'Black Magic'</i> | Black leaved Taro | 5L | 500mm | 500mm / 200mm |
| Cs | <i>Ceanothus 'Silver Dust'</i> | Ceanothe | 5L | 500mm | 500mm / 300mm |
| LEG | <i>Litopis 'Evergreen Giant'</i> | Giant Litopis | 2.5L | 250mm | 300mm / 200mm |
| Ns | <i>Neoregelia sp.</i> | Bromeliad | 5L | 350mm | 300mm / 300mm |
| Nf | <i>Nepeta x 'bassenii' 'Six Hills Giant'</i> | Cat Mint | 2.5L | 300mm | 200mm / 200mm |
| Pcr | <i>Polka crispata</i> | Polka | 2.5L | 300mm | 150mm / 200mm |
| Vh | <i>Viola hederacea</i> | Woolly Violet | 2.5L | 250mm | 100mm / 200mm |
| Vo | <i>Viola odorata</i> | Sweet Violet | 2.5L | 250mm | 100mm / 200mm |
| Zc | <i>Zephyranthes candida</i> | Windflower | 2.5L | 250mm | 250mm / 250mm |

| | | | | | |
|-----------------|------------------------------------|----------------------|-----------|-------|---------------|
| Herbs | | | | | |
| Mu | <i>Mentha x 'piperita'</i> | Mint | 125mm pot | 200mm | 100mm / 100mm |
| Ov | <i>Oreganum vulgare</i> | Oregano | 125mm pot | 200mm | 100mm / 100mm |
| HBL | <i>Rosmarinus 'Blue Lagoon'</i> | Prostrate Rosemary | 125mm pot | 200mm | 100mm / 100mm |
| So | <i>Sabia officinalis</i> | Sage | 125mm pot | 200mm | 100mm / 100mm |
| Tv | <i>Thymus vulgaris</i> | Thyme | 125mm pot | 200mm | 100mm / 100mm |
| Climbers | | | | | |
| Sf | <i>Stephanotis floribunda</i> | Wax flower | 25L | 750mm | 1.2m / 400mm |
| Tj | <i>Trachelospermum jasminoides</i> | Chinese Star Jasmine | 45L | 750mm | 1.2m / 400mm |

| RETAIL PLAZA | | | | | |
|--------------|-----------------------------|-------------|------|---------|-----------------|
| Symbol | Species | Common Name | Size | Spacing | Height / Spread |
| Trees | | | | | |
| Oe | <i>Olea Europea</i> | Olive | 100L | 6m | 3m / 1.2m |
| | <i>Citrus limon 'Meyer'</i> | Meyer Lemon | 100L | n/a | 2m / 1.2m |

| DEEP SOIL PLANTING | | | | | |
|--------------------|--------------------------------------|----------------------|--------|---------|-----------------|
| Symbol | Species | Common Name | Size | Spacing | Height / Spread |
| Trees | | | | | |
| Ar | <i>Agathis robusta</i> | Smooth Bark Kauri | 200L | N/A | 3.0m / 1.0m |
| Ac | <i>Angophora costata</i> | Angie Apple Gum | 600RCP | 8m | 3.5m / 1.5m |
| Bs | <i>Banksia serrata</i> | Old Man Banksia | 25L | 1.75m | 1.5m / 600mm |
| Ga | <i>Cupressus anacardioides</i> | Tuckeroo | 200L | 5m | 3.5m / 2.5m |
| Eh | <i>Eucalyptus haemostoma</i> | Scrubby Gum | 400RCP | 7m | 1.8m / 1.0m |
| El | <i>Eucalyptus robusta</i> | Swamp Mahogany | 400RCP | 7m | 1.8m / 1.0m |
| Fr | <i>Ficus rubiginosa</i> | Port Jackson Fig | 100L | N/A | 1.8m / 1.0m |
| Fj | <i>Ficus 'M Fug'</i> | White Weeping Cherry | 200L | 5m | 3.0m / 1.5m |
| Rp | <i>Robinia pseudoacacia 'Frisia'</i> | Golden Robinia | 200L | 8m | 3.0m / 1.0m |

| | | | | | |
|---------------|--------------------------------------|-------------------------|------|-------|---------------|
| Shrubs | | | | | |
| Au | <i>Acacia ulicifolia</i> | Packy Moses | 2.5L | 400mm | 300mm / 200mm |
| As | <i>Asplenium 'Blushing Beauty'</i> | Red-leaved Asplenium | 25L | 600mm | 1.0m / 600mm |
| Be | <i>Banksia ericifolia</i> | Heath Banksia | 2.5L | 500mm | 600mm / 400mm |
| Pt | <i>Boerhaavia 'Little Favourite'</i> | Dwarf Purple Boerhaavia | 25L | 500mm | 600mm / 500mm |
| Cc | <i>Callistemon 'Firebrand'</i> | Dwarf Bottle Brush | 2.5L | 400mm | 400mm / 200mm |
| Cz | <i>Callistemon 'White Anzac'</i> | White Bottle Brush | 2.5L | 400mm | 400mm / 200mm |
| Ca | <i>Canoe alba</i> | White Correa | 5L | 500mm | 400mm / 200mm |
| Cp | <i>Duranta 'Sheena's Gold'</i> | Golden Duranta | 25L | 600mm | 1.0m / 600mm |
| Ve | <i>Verbena 'Emerald Lustre'</i> | Verbena | 25L | 600mm | 1.0m / 600mm |
| Wt | <i>Westringia frutescens</i> | Coastal Rosemary | 5L | 600mm | 400mm / 200mm |

| | | | | | |
|--------------|--------------------------------|-----------------|------|-------|---------------|
| Ferns | | | | | |
| An | <i>Asplenium australasicum</i> | Birds Nest Fern | 5L | 500mm | 400mm / 300mm |
| Bc | <i>Blechnum cordifolium</i> | Rasp Fern | 2.5L | 300mm | 200mm / 200mm |

| | | | | | |
|------------------------------------|--|------------------------|------|-------|---------------|
| Perennials and Groundcovers | | | | | |
| Ag | <i>Agave attenuata</i> | Blue Agave | 25L | 400mm | 400mm / 400mm |
| AcG | <i>Agave reptans 'Cattin's Giant'</i> | Giant Bugle | 2.5L | 300mm | 150mm / 250mm |
| Az | <i>Alpinia zerumbet</i> | Shell Ginger | 5L | 500mm | 500mm / 300mm |
| Ad | <i>Altemantthera dentata</i> | Purple Altemantthera | 2.5L | 400mm | 200mm / 200mm |
| Bh | <i>Begonia hybrid</i> | Begonia | 2.5L | 300mm | 250mm / 200mm |
| Ct | <i>Canna 'Tropicanna'</i> | Canna Lily | 5L | 400mm | 500mm / 200mm |
| Gg | <i>Carpobrotus glaucescens</i> | Native Pig Face | 2.5L | 500mm | 100mm / 200mm |
| Dc | <i>Dianella caerulea</i> | Paroo Lily | 2.5L | 400mm | 300mm / 200mm |
| Dp | <i>Doranythes palmieri</i> | Giant Gymea Lily | 75L | 1.8m | 1.5m / 1.5m |
| Ec | <i>Echium fastuosum</i> | Pride of Madeira | 5L | 500mm | 500mm / 300mm |
| Hv | <i>Hardenbergia violacea</i> | Happy Wanderer | Tube | 600mm | 200mm / 400mm |
| Hsp | <i>Hemerocallis sp.</i> | Daylily | 5L | 300mm | 500mm / 500mm |
| Hsc | <i>Hibbertia scandens</i> | Snake Vine | 2.5L | 600mm | 200mm / 400mm |
| Hs | <i>Hymenocallis speciosa</i> | Spider Lily | 5L | 450mm | 400mm / 200mm |
| Li | <i>Lomandra longifolia</i> | Mat Rush | 2.5L | 400mm | 400mm / 300mm |
| Mp | <i>Myoporum parvifolium</i> | Creeping Boobiala | 2.5L | 500mm | 200mm / 300mm |
| Pc | <i>Phormium cookianum</i> | N Z Flax | 25L | 500mm | 700mm / 700mm |
| Ph | <i>Phormium tenax 'Meori Maiden'</i> | Dwarf Red Flax | 2.5L | 400mm | 400mm / 300mm |
| St | <i>Saxifraga hibernica 'Vanegata'</i> | Vanegated Tongue Plant | 5L | 300mm | 400mm / 200mm |
| Za | <i>Zantedeschia aethiopica 'Green Goddess'</i> | Green Arum Lily | 6L | 400mm | 500mm / 200mm |

| WESTERN PERIMETER PLANTING | | | | | |
|----------------------------|-------------------------------------|-----------------|------|---------|-----------------|
| Symbol | Species | Common Name | Size | Spacing | Height / Spread |
| Trees | | | | | |
| | <i>Elaeagnus 'Eumundi'</i> | Eumundi Ash | 200L | n/a | 3.0m / 1.0m |
| | <i>Elaeagnus reticulata</i> | Blueberry Ash | 200L | n/a | 3.0m / 1.25m |
| Shrubs | | | | | |
| As | <i>Acacia stipitata</i> | | 5L | 800mm | 800mm / 400mm |
| Dv | <i>Dorfonaea viscosa 'Purpurea'</i> | Purple Hop bush | 5L | 600mm | 1.0m / 400mm |



EXISTING FENCE



INSITU CONCRETE PLANTERS



GRANITE PAVING



STACKBOND GRANITE PAVING



CONCRETE FOOTPATH AND TURF VERGE WITH BUFFER PLANTING



COLOUR BLOCKING OF MASS PLANTING



FOCUS ON FOLIAGE



MASS PLANTING WITH ACCENTS, TO BE VIEWED FROM ABOVE



FLUSH PLANTING TO PLAZA



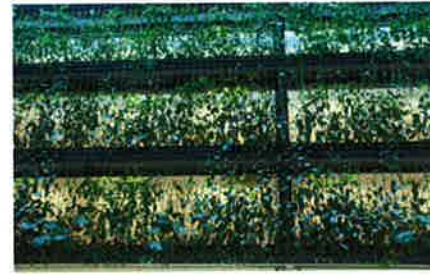
PRIVATE TERRACE WITH BORROWED COMMUNAL LANDSCAPE



SCULPTURAL PLANTERS



VERTICAL GREEN ELEMENTS



FILTERED VIEWS



TRELLIS STRUCTURE



LASER CUT PATTERN TO TRELLIS



TIMBER SEATING WITH ARM RESTS

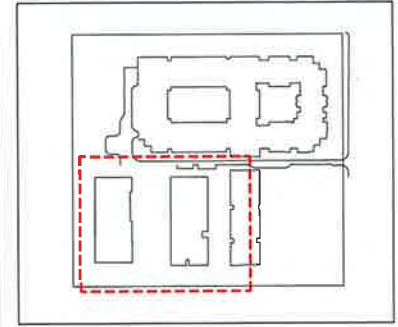


CURVILINEAR RAISED PLANTERS WITH SEATING MOUNTED ON EDGE



WATER FEATURE IN COURTYARD

OCULUS
Level 1, 5 Wilson Street / Post Box 307, Newtown NSW 2042
p 02 9557 5533 f 02 9514 8223 sydney@oculus.com.au
LANDSCAPE ARCHITECT
© OCULUS 2015 All rights reserved.














| DATE | DESCRIPTION | REV |
|----------|---------------------------|-----|
| 21/08/15 | DRAFT PROJECT APPLICATION | A |
| | | |
| | | |
| | | |
| | | |
| | | |
| | | |
| | | |
| | | |

SIR MOSES MONTEFIORE
JEWISH HOME, RANDWICK
CLIENT
JACKSON TEECE
LOT 1, PIER 8-9, 23 HICKSON ROAD, WALSH BAY, NSW 2000
ARCHITECT
MONTEFIORE, RANDWICK
STAGE 2
PROJECT
PROJECT APPLICATION

PURPOSE OF DRAWING
INDICATIVE PLANTING SCHEDULE AND PRECEDENT IMAGES
DRAWING TITLE
NORTH
SCALE AS SHOWN @ A1 DRAWN BY KV
DATE 01/04/2016 CHECKED BY KL
JOB NO. S15-032 APPROVED BY KS
DRAWING NO. REVISION
PA -L-300 A
DRAWING INFORMATION

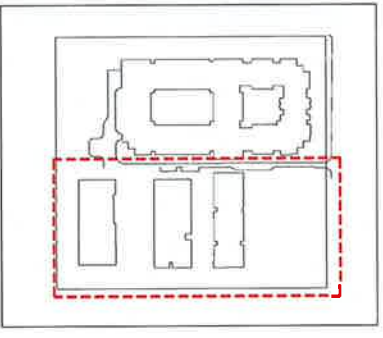
Legend

-  Ornamental mass planting
-  Link on structure
-  Private terrace
-  Dementia courtyard
-  Screening
-  Avenue planting
-  Street trees
-  Boundary tree planting
-  Public plaza
-  Childcare courtyard
-  Turf Verge

Govett Lane

Dangar Street

King Street



KEY PLAN

| DATE | DESCRIPTION | REV |
|----------|---------------------------|-----|
| 21/06/15 | DRAFT PROJECT APPLICATION | A |
| 01/04/16 | PROJECT APPLICATION | B |
| | | |
| | | |
| | | |
| | | |
| | | |
| | | |
| | | |
| | | |
| | | |

REVISIONS

SIR MOSES MONTEFIORE
 JEWISH HOME, RANDWICK
 CLIENT
JACKSON TEECE
 LOT 1, PIER B-9, 23 HICKSON ROAD, WALSH BAY, NSW 2000

ARCHITECT
 MONTEFIORE, RANDWICK
 STAGE 2

PROJECT
 PROJECT APPLICATION

PURPOSE OF DRAWING
 SPACES AND PLANTING TYPES

DRAWING TITLE



NORTH

| | | | |
|-------------|------------|-------------|----|
| SCALE | N.T.S | DRAWN BY | KV |
| DATE | 01/04/2016 | CHECKED BY | KL |
| JOB NO. | S15-032 | APPROVED BY | KS |
| DRAWING NO. | | REVISION | |

PA -L-400 B

DRAWING INFORMATION

Legend

| | |
|---|---------------------|
|  | Communal area |
|  | Public plaza |
|  | Private terrace |
|  | Childcare courtyard |
|  | Terrace |
|  | Courtyard |
|  | Existing courtyard |

Govett Lane

Dangar Street

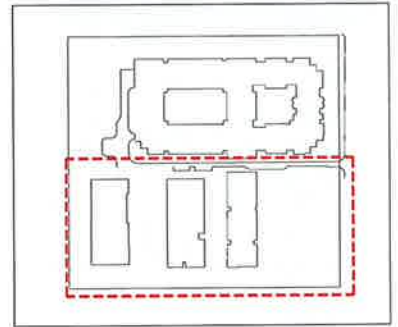
King Street

OCULUS

Level 1, 5 Wilson Street / part lots 337 Newtown NSW 2042
p. 02 9557 5533 f. 02 9519 8323 www.oculus.com.au

LANDSCAPE ARCHITECT

© OCULUS 2015 All rights reserved.



REVISIONS

| DATE | DESCRIPTION | REV |
|----------|---------------------------|-----|
| 21/01/15 | DRAFT PROJECT APPLICATION | A |
| 28/04/15 | PROJECT APPLICATION | B |
| | | C |
| | | D |
| | | E |
| | | F |
| | | G |
| | | H |
| | | I |
| | | J |

REVISIONS

SIR MOSES MONTEFIORE
JEWISH HOME, RANDWICK

CLIENT

JACKSON TEECE
LOT 1, PIER 8-9, 23 HICKSON ROAD, WALSH BAY, NSW 2000

ARCHITECT

MONTEFIORE, RANDWICK
STAGE 2

PROJECT

PROJECT APPLICATION

PURPOSE OF DRAWING

PRIVATE AND PUBLIC SPACE

DRAWING TITLE

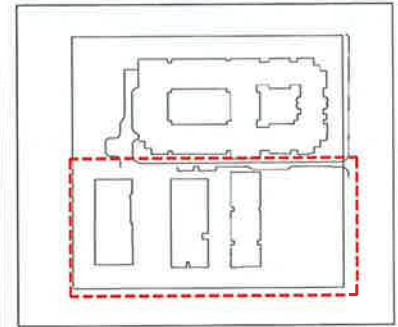


NORTH





| | | | |
|-------------|------------|-------------|----|
| SCALE | N.T.S. | DRAWN BY | KV |
| DATE | 01/04/2016 | CHECKED BY | KL |
| JOB NO. | S15-032 | APPROVED BY | KS |
| DRAWING NO. | | REVISION | |

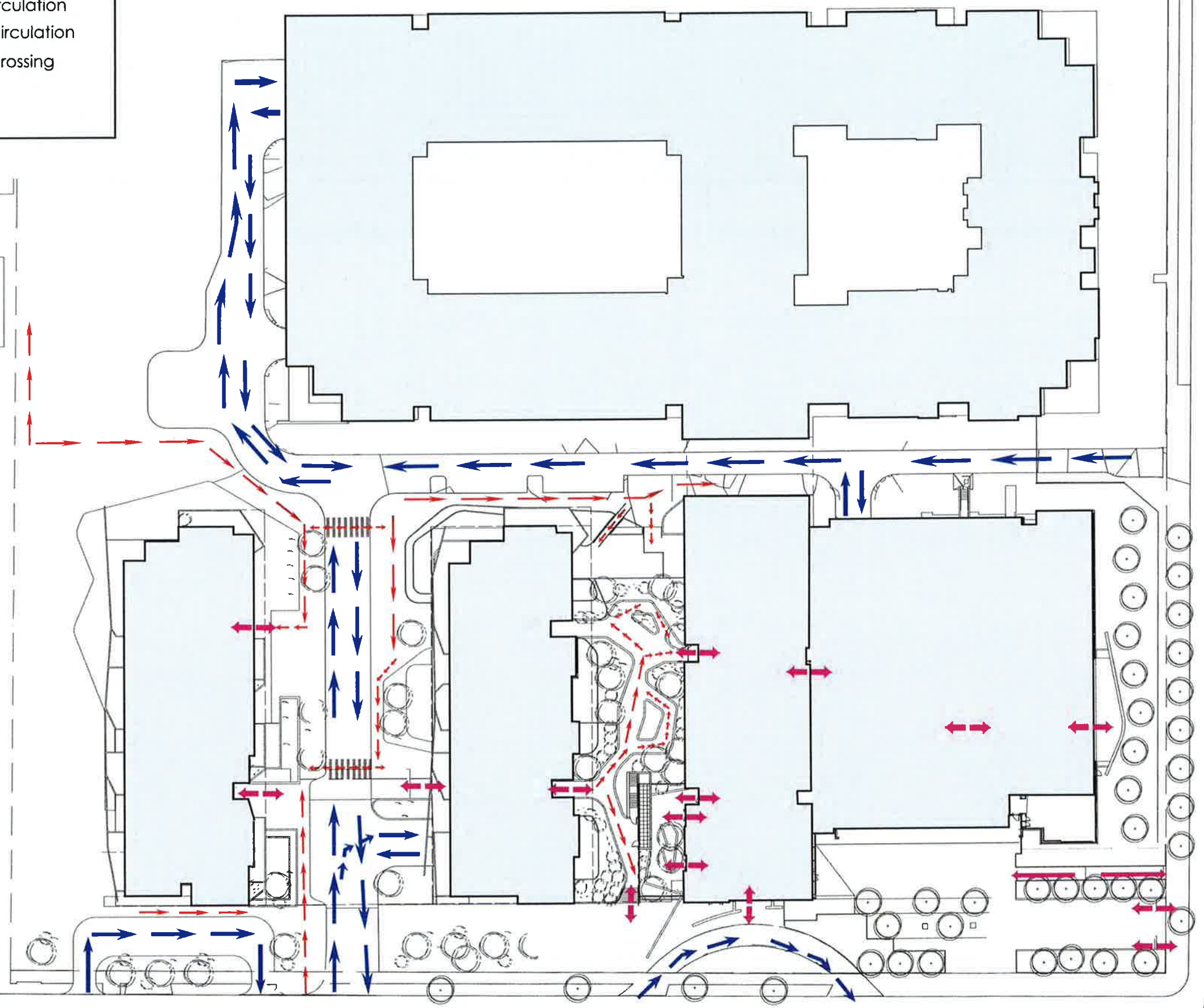
PA -L-401 B

DRAWING INFORMATION



Legend

-  Vehicular circulation
-  Pedestrian circulation
-  Pedestrian crossing
-  Entrances



REVISIONS

| DATE | DESCRIPTION | REV |
|----------|---------------------------|-----|
| 21/06/15 | DRAFT PROJECT APPLICATION | A |
| 01/04/16 | PROJECT APPLICATION | B |
| | | |
| | | |
| | | |
| | | |
| | | |
| | | |
| | | |

SIR MOSE MONTEFIORE
 JEWISH HOME, RANDWICK

JACKSON TEECE
 LOT 1, PIER 8-9, 23 HICKSON ROAD, WALSH BAY, NSW 2000

MONTEFIORE, RANDWICK
 STAGE 2

PROJECT APPLICATION

CIRCULATION DIAGRAM

DRAWING TITLE



SCALE N.T.S. **DRAWN BY** KV

DATE 01/04/2016 **CHECKED BY** KL

JOB NO. S15-032 **APPROVED BY** KS

DRAWING NO. **REVISION**

PA -L-402 B

DRAWING INFORMATION

Govett Lane

Dangar Street

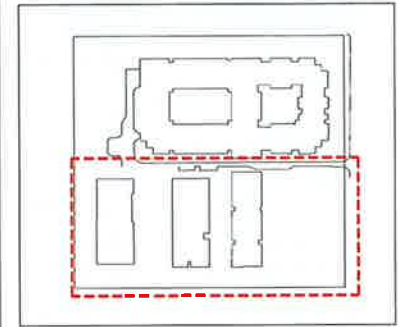
King Street

Legend

Deep Soil Planting
 Basement



OCULUS
 Level 1, 9 Wilson Street / Suite 107 Newtown NSW 2042
 p: 02 9557 5553 f: 02 9519 8323 sydney@oculus.com.au
 LANDSCAPE ARCHITECT
 © OCULUS 2015 All rights reserved.



KEY PLAN

| DATE | DESCRIPTION | REV |
|----------|---------------------------|-----|
| 01/04/16 | DRAFT PROJECT APPLICATION | A |
| | | |
| | | |
| | | |
| | | |
| | | |
| | | |
| | | |
| | | |
| | | |

REVISIONS

SIR MOSES MONTEFIORE
 JEWISH HOME, RANDWICK
 CLIENT
JACKSON TEECE
 LOT 1, PIER 8-9, 23 HICKSON ROAD, WALSH BAY, NSW 2000

ARCHITECT
 MONTEFIORE, RANDWICK
 STAGE 2

PROJECT
 PROJECT APPLICATION

PURPOSE OF DRAWING
 DEEP SOIL PLANTING

DRAWING TITLE



NORTH

| | | | |
|-------------|------------|-------------|----|
| SCALE | N.T.S. | DRAWN BY | KV |
| DATE | 01/04/2016 | CHECKED BY | KL |
| JOB NO. | S15-032 | APPROVED BY | KS |
| DRAWING NO. | | REVISION | |

PA -L-403 A

DRAWING INFORMATION