

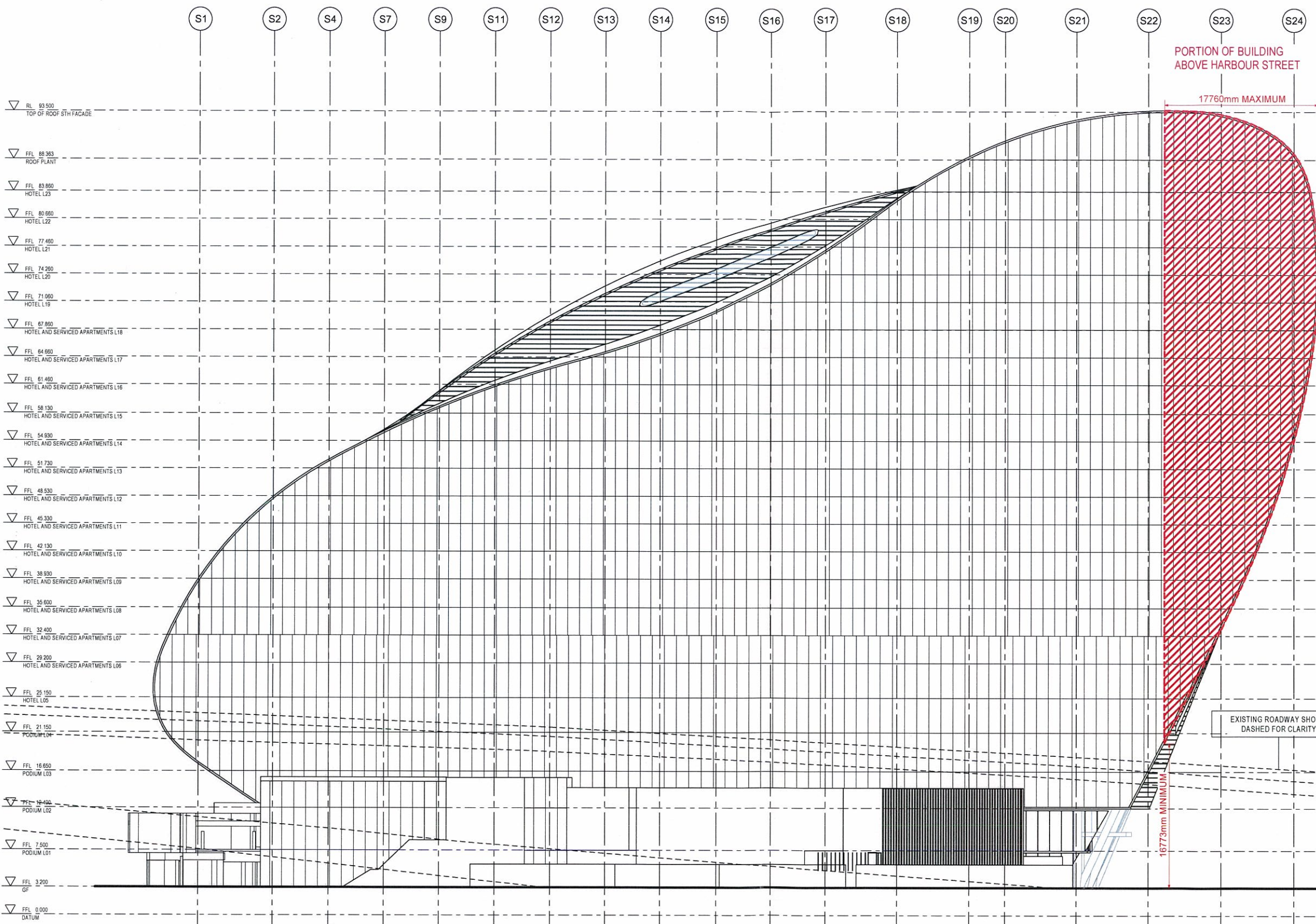
THE RIBBON HOTEL, SERVICED APARTMENTS AND RETAIL
Signage Matrix

19/April/2013

Revision A

Issued for Information

Code	Programme	Type	Location (aspect)	Location	Signage Zone Size (mm)	Purpose
CIN-01	Cinema	Backlit, logo	West	Road	7500x2000	Primary cinema signage
CIN-02	Cinema	Backlit, logo	West	Pedestrian	5400x1200	Secondary cinema signage
CIN-03	Cinema	LED, animated	West	Pedestrian	18000x900	"Now Showing" animated advertisement
CIN-05	Cinema	Semi-transparent decal	West	Road	22000x6500	Cinema lobby glazing visible from Freeway exit
CIN-06	Cinema	Backlit, poster	West	Pedestrian	3000x7000	"Now Showing" poster advertisement
CIN-07	Cinema	Backlit, poster	South	Pedestrian	24000x7000	"Now Showing" poster advertisement
GEN-01	General	LED, video screen	West	Pedestrian	9000x5060	Public video screen
HOT-01	Hotel	Backlit, logo	North	Sky	16500x6400	Primary hotel sky signage
HOT-02	Hotel	Backlit, logo	South	Sky	16500x6900	Primary hotel sky signage
HOT-03	Hotel	Backlit, logo	East	Pedestrian	9000x9000	Primary hotel entry signage
RET-02	Retail Tenancy	Backlit, logo	North	Pedestrian	900 HIGH, LENGTH OF SHOPFRONT	Retail shopfront signage
RET-03	Retail Tenancy	Backlit, logo	North	Pedestrian	900 HIGH, LENGTH OF SHOPFRONT	Retail shopfront signage
RET-04	Retail Tenancy	Backlit, logo	North	Pedestrian	900 HIGH, LENGTH OF SHOPFRONT	Retail shopfront signage
RET-05	Retail Tenancy	Backlit, logo	North	Pedestrian	900 HIGH, LENGTH OF SHOPFRONT	Retail shopfront signage
RET-06	Retail Tenancy	Backlit, logo	East	Pedestrian	900 HIGH, LENGTH OF SHOPFRONT	Retail shopfront signage
RET-07	Retail Tenancy	Backlit, logo	East	Pedestrian	900 HIGH, LENGTH OF SHOPFRONT	Retail shopfront signage
RET-08	Retail Tenancy	Backlit, logo	East	Pedestrian	900 HIGH, LENGTH OF SHOPFRONT	Retail shopfront signage
RET-09	Retail Tenancy	Backlit, logo	East	Pedestrian	900 HIGH, LENGTH OF SHOPFRONT	Retail shopfront signage
TEN-01	Primary Tenant/Sponsor	Backlit, logo	West	Road	18700x3500	Primary tenant/sponsor advertisement
TEN-02	Primary Tenant/Sponsor	Backlit, logo	West	Pedestrian	2200x2200	Secondary tenant/sponsor advertisement



REFERENCE MAP

0 4 8 16m
1:200

NOTES

- DO NOT SCALE DRAWING. WRITTEN DIMENSIONS GOVERN
- ALL DIMENSIONS ARE IN MILLIMETRES UNLESS NOTED OTHERWISE
- ALL DIMENSIONS SHALL BE VERIFIED ON SITE BEFORE PROCEEDING WITH THE WORK. HASSELL SHALL BE NOTIFIED IN WRITING OF ANY DISCREPANCIES
- THIS DRAWING MUST BE READ IN CONJUNCTION WITH ALL RELEVANT CONTRACTS, SPECIFICATIONS AND DRAWINGS

© COPYRIGHT OF THIS DRAWING IS VESTED IN HASSELL LTD 2015 HASSELL LTD
THIS DRAWING IS AN UNCONTROLLED COPY UNLESS NOTED OTHERWISE

REV	DESCRIPTION	DATE
C	AMENDED DEVELOPMENT APPLICATION	15.12.15
B	AMENDED DEVELOPMENT APPLICATION	23.10.15
A	DEVELOPMENT APPLICATION	20.08.13
-	ISSUED FOR INFORMATION	23.07.13

ARCHITECT
HASSELL Limited ABN 007 711 435
LEVEL 2, PIER 8/9
23 HICKSON ROAD
SYDNEY NSW 2000 AUSTRALIA
SYDNEY@HASSELLSTUDIO.COM
T +61 2 9101 2000 F +61 2 9101 2100

HASSELL

RUSSELL & GEORGE **pmcl**

CLIENT
Grocon

PROJECT
THE RIBBON HOTEL,
SERVICED APARTMENTS AND RETAIL
31 WHEAT ROAD, SYDNEY

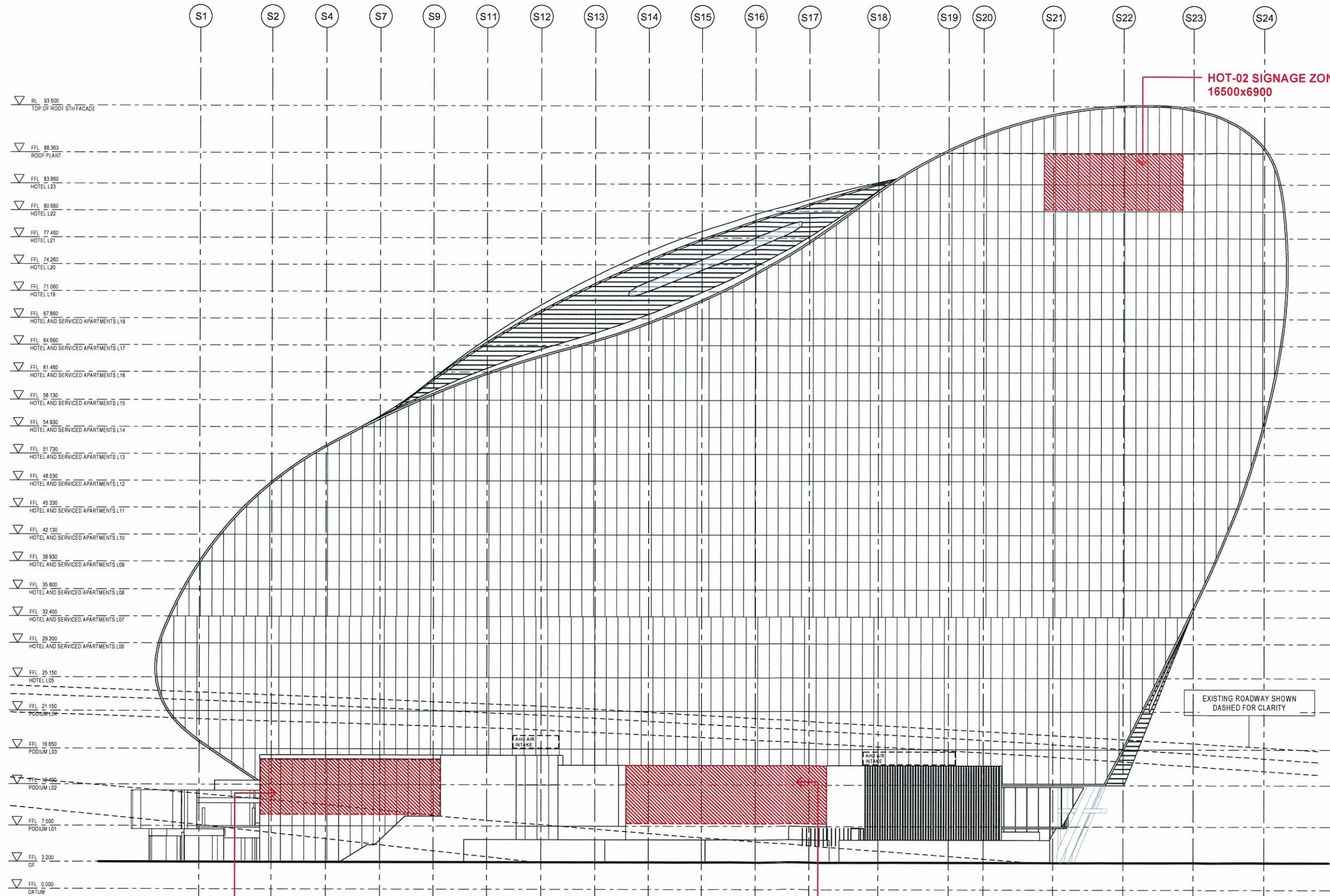
DRAWING TITLE
PROPOSED CANTILEVER OVER RMS
ROADWAY

STATUS
FOR APPROVAL

SCALE @ B1	DRAWN	CO-ORD	REVIEWED	APPROVED
1:200	RT	JO	JO	CW

PROJECT NUMBER	DRAWING NUMBER	REV
A004409	ARC-HSL-DD-1077	C

Original Sheet Size B1-1000 x 707mm



**SIGNAGE TYPES AND LOCATIONS
SOUTH ELEVATION**

DRAWING NO.: SK026.1
 DATE: 18 APRIL 2016
 BASED ON: ARC-HSL-DD-1150 Rev E
 DRAWING TITLE: SIGNAGE TYPES & LOCATIONS
 SOUTH ELEVATION

REFERENCE MAP

0 4 8 16m
1:200

NOTES

- DO NOT SCALE DRAWINGS. WRITTEN DIMENSIONS GOVERN
- ALL DIMENSIONS ARE IN MILLIMETRES UNLESS NOTED OTHERWISE
- ALL DIMENSIONS SHALL BE VERIFIED ON SITE BEFORE PROCEEDING WITH THE WORK. HASSELL SHALL BE NOTIFIED IN WRITING OF ANY DISCREPANCIES
- THIS DRAWING MUST BE READ IN CONJUNCTION WITH ALL RELEVANT CONTRACTS, SPECIFICATIONS AND DRAWINGS

© COPYRIGHT OF THIS DRAWING IS VESTED IN HASSELL LTD
 2015 HASSELL LTD

THIS DRAWING IS AN UNCONTROLLED COPY UNLESS NOTED OTHERWISE

FOR INFORMATION ONLY

ARCHITECT

HASSELL Limited ABN 007 711 435
 LEVEL 2, PIER 8/6
 23 HICKSON ROAD
 SYDNEY NSW 2000 AUSTRALIA
 SYDNEY@HASSELLSTUDIO.COM
 T +61 2 9101 2000 F +61 2 9101 2100

HASSELL

RUSSELL & GEORGE pmml

CLIENT

Grocon

PROJECT

THE RIBBON HOTEL,
 SERVICED APARTMENTS AND RETAIL
 31 WHEAT ROAD, SYDNEY

DRAWING TITLE

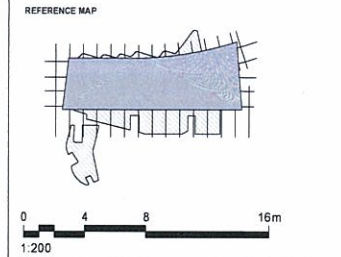
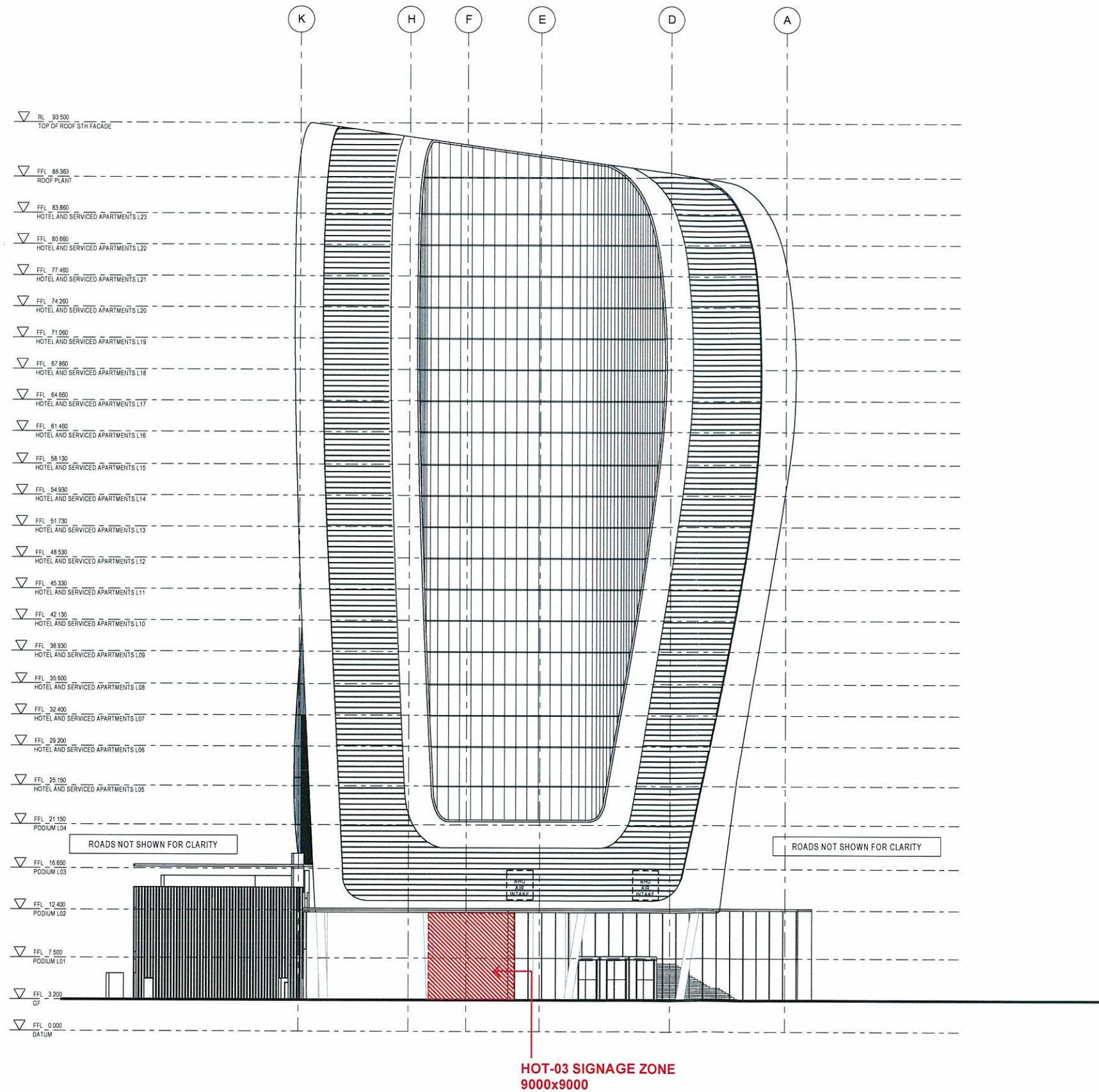
GA ELEVATIONS - SHEET 1

FOR APPROVAL

FOR INFORMATION ONLY

Original Sheet Size B1-1000 x 707mm

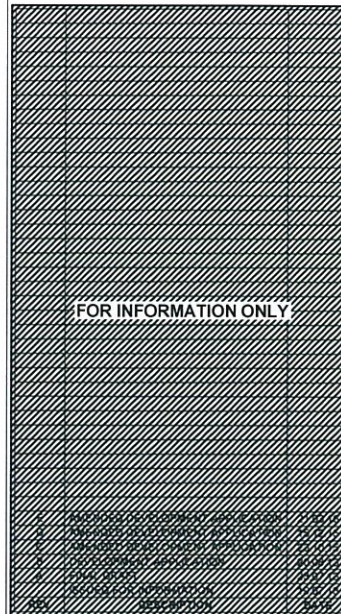
SIGNAGE TYPES AND LOCATIONS EAST ELEVATION



- NOTES
- DO NOT SCALE DRAWINGS. WRITTEN DIMENSIONS GOVERN.
 - ALL DIMENSIONS ARE IN MILLIMETRES UNLESS NOTED OTHERWISE.
 - ALL DIMENSIONS SHALL BE VERIFIED ON SITE BEFORE PROCEEDING WITH THE WORK. HASSELL SHALL BE NOTIFIED IN WRITING OF ANY DISCREPANCIES.
 - THIS DRAWING MUST BE READ IN CONJUNCTION WITH ALL RELEVANT CONTRACTS, SPECIFICATIONS AND DRAWINGS.

© COPYRIGHT OF THIS DRAWING IS VESTED IN HASSELL LTD
2015 HASSELL LTD

THIS DRAWING IS AN UNCONTROLLED COPY UNLESS NOTED OTHERWISE



ARCHITECT
HASSELL LIMITED ABN 007 711 435
LEVEL 2, PIER 85,
23 HICKSBY ROAD
SYDNEY NSW 2000 AUSTRALIA
SYDNEY@HASSELLSTUDIO.COM
T +61 2 9101 2000 F +61 2 9101 2100

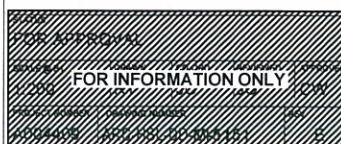
HASSELL

RUSSELL & GEORGE **pmdl**

CLIENT
Grocon

PROJECT
THE RIBBON HOTEL,
SERVICED APARTMENTS AND RETAIL
31 WHEAT ROAD, SYDNEY

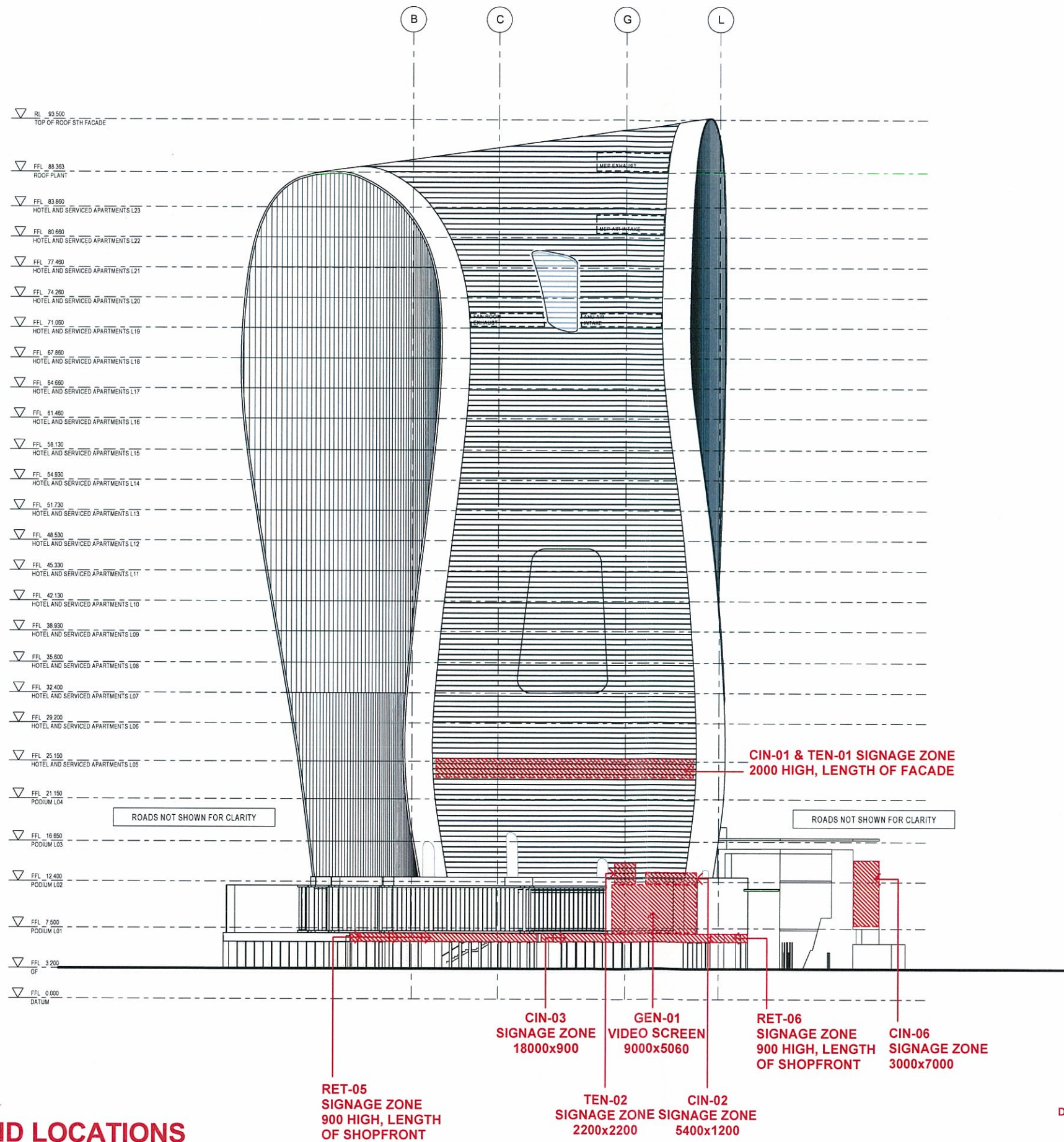
DRAWING TITLE
GA ELEVATIONS - SHEET 2



DRAWING NO.: SK026.2
DATE: 18 APRIL 2016
BASED ON: ARC-HSL-DD-1151 Rev E
DRAWING TITLE: SIGNAGE TYPES & LOCATIONS
EAST ELEVATION

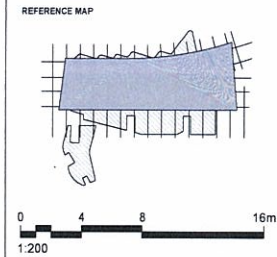
HASSELL - 1743 24m
 18/03/16 10:15:16 AM
 Original Sheet Size B1-1000 x 707mm

SIGNAGE TYPES AND LOCATIONS WEST ELEVATION



DRAWING NO.: SK026.3
DATE: 18 APRIL 2016
BASED ON: ARC-HSL-DD-1152 Rev E

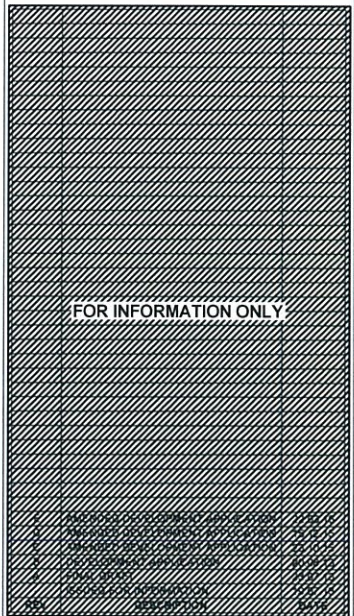
DRAWING TITLE: SIGNAGE TYPES & LOCATIONS
WEST ELEVATION



- NOTES
- DO NOT SCALE DRAWINGS. WRITTEN DIMENSIONS GOVERN.
 - ALL DIMENSIONS ARE IN MILLIMETRES UNLESS NOTED OTHERWISE.
 - ALL DIMENSIONS SHALL BE VERIFIED ON SITE BEFORE PROCEEDING WITH THE WORK. HASSELL SHALL BE NOTIFIED IN WRITING OF ANY DISCREPANCIES.
 - THIS DRAWING MUST BE READ IN CONJUNCTION WITH ALL RELEVANT CONTRACTS, SPECIFICATIONS AND DRAWINGS.

© COPYRIGHT OF THIS DRAWING IS VESTED IN HASSELL LTD 2015 HASSELL LTD

THIS DRAWING IS AN UNCONTROLLED COPY UNLESS NOTED OTHERWISE



ARCHITECT
HASSELL Limited ABN 007 711 435
LEVEL 2, PIER 8/6
23 HICKSBI ROAD
SYDNEY NSW 2000 AUSTRALIA
SYDNEY@HASSELLSTUDIO.COM
T +61 2 9151 2000 F +61 2 9151 2100

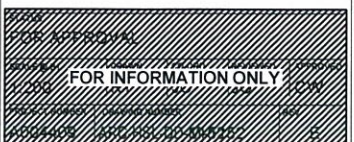
HASSELL

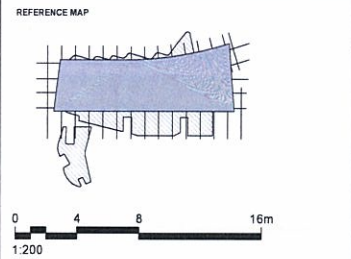
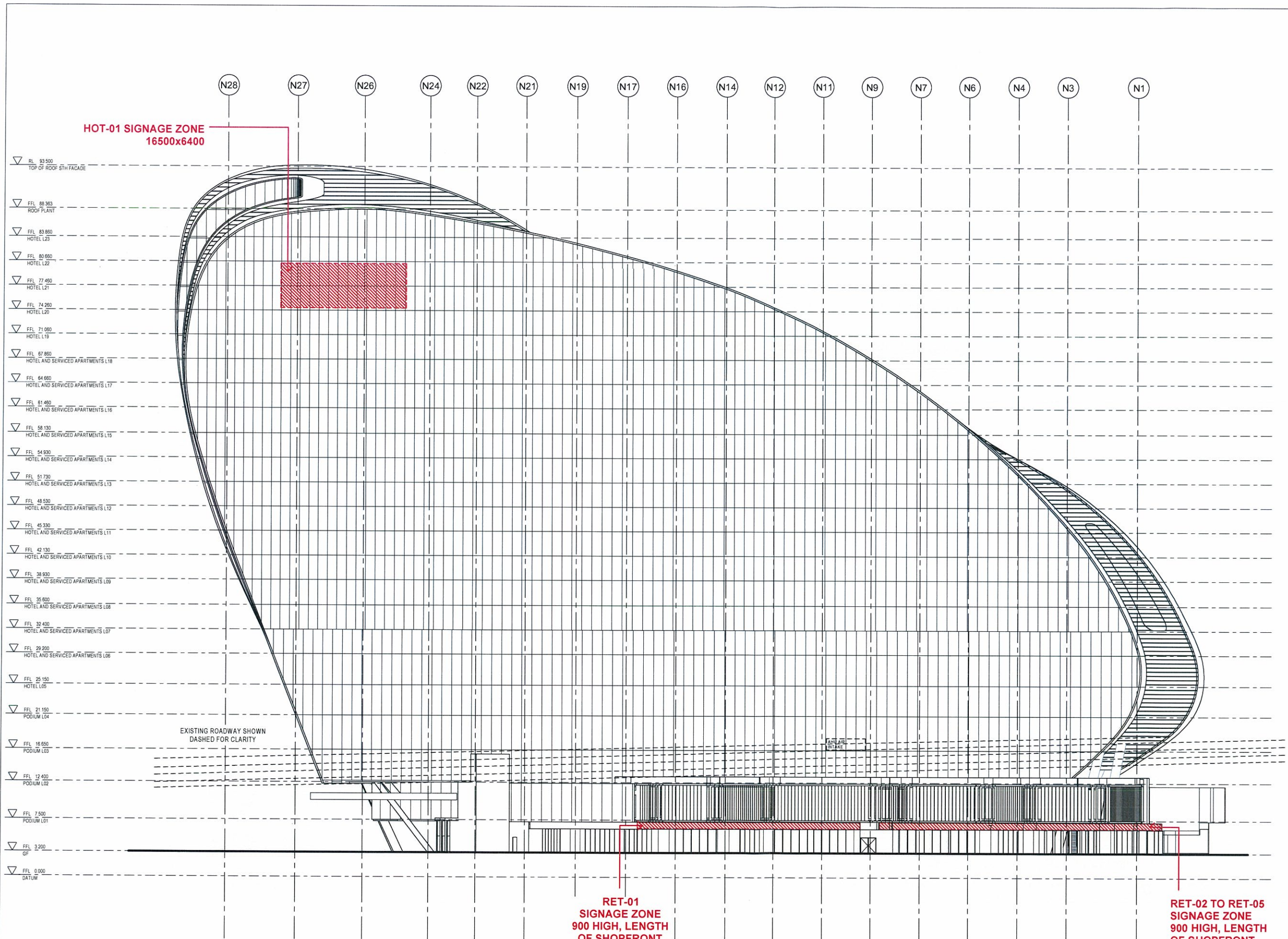
RUSSELL & GEORGE **pmcl**

CLIENT
Grocon

PROJECT
THE RIBBON HOTEL,
SERVICED APARTMENTS AND RETAIL
31 WHEAT ROAD, SYDNEY

DRAWING TITLE
GA ELEVATIONS - SHEET 3



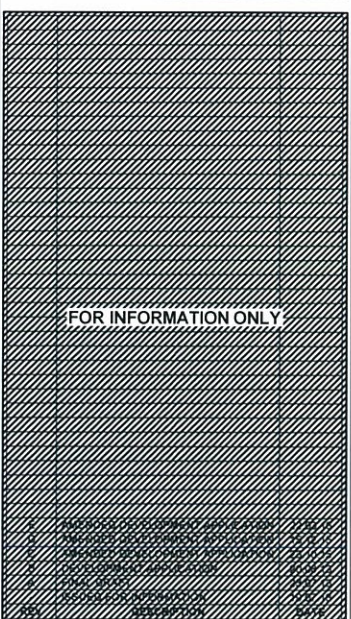


NOTES

- DO NOT SCALE DRAWINGS. WRITTEN DIMENSIONS GOVERN.
- ALL DIMENSIONS ARE IN MILLIMETRES UNLESS NOTED OTHERWISE
- ALL DIMENSIONS SHALL BE VERIFIED ON SITE BEFORE PROCEEDING WITH THE WORK. HASSELL SHALL BE NOTIFIED IN WRITING OF ANY DISCREPANCIES.
- THIS DRAWING MUST BE READ IN CONJUNCTION WITH ALL RELEVANT CONTRACTS, SPECIFICATIONS AND DRAWINGS.

© COPYRIGHT OF THIS DRAWING IS VESTED IN HASSELL LTD 2015 HASSELL LTD

THIS DRAWING IS AN UNCONTROLLED COPY UNLESS NOTED OTHERWISE



ARCHITECT
 HASSELL Limited ABN 007 711 435
 LEVEL 2, PIER 6/9
 23 HICKSON ROAD
 SYDNEY NSW 2000 AUSTRALIA
 SYDNEY@HASSELLSTUDIO.COM
 T +61 2 9101 2000 F +61 2 9101 2100

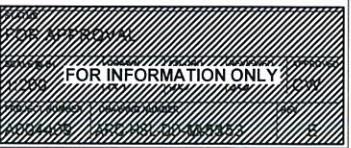
HASSELL

RUSSELL & GEORGE **pmd**

CLIENT

PROJECT
 THE RIBBON HOTEL,
 SERVICED APARTMENTS AND RETAIL
 31 WHEAT ROAD, SYDNEY

DRAWING TITLE
 GA ELEVATIONS - SHEET 4



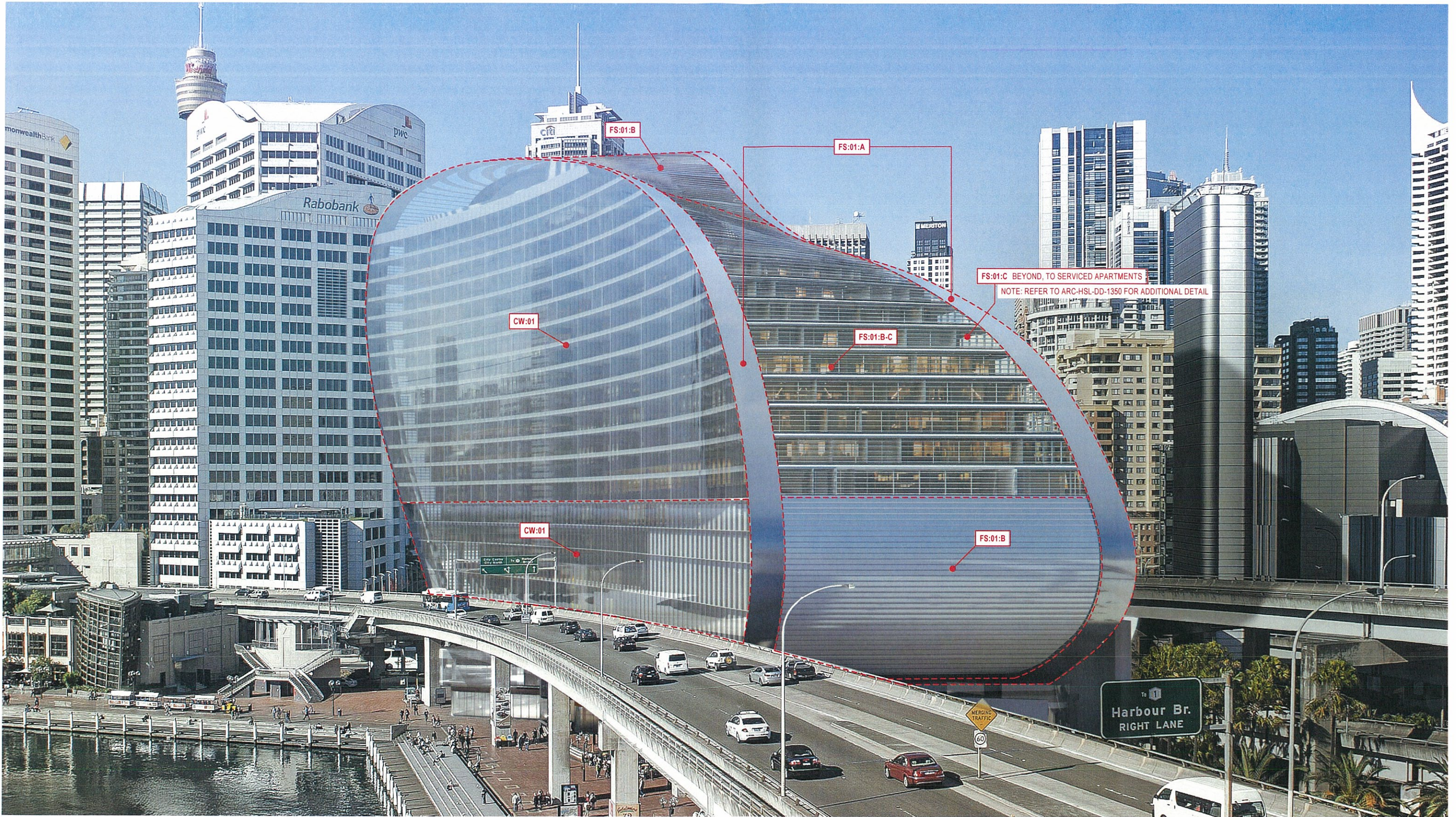
**SIGNAGE TYPES AND LOCATIONS
 NORTH ELEVATION**

DRAWING NO.: SK026.4
DATE: 18 APRIL 2016
BASED ON: ARC-HSL-DD-1153 Rev E
DRAWING TITLE: SIGNAGE TYPES & LOCATIONS
 NORTH ELEVATION

HASSELL LTD 2015 HASSELL LTD
 18/04/2016 10:58 AM
 Original Sheet Size 81-1000 x 707mm

Code	Architectural Program	Location	Max. Visible Light Reflectivity*				Details	Notes
			North	South	West	East		
CL:01	Back of the House/Service	South elevation, podium levels	-	15%	-	-	Modular polyester powder coated insulated aluminium panels.	
CW:01	Hotel, Serviced Apartments	North and South elevations above podium	8%	15%	-	-	High performance low reflectivity curtain wall façade system with polyester powder coated framing.	
CW:02	Hotel	East elevation	-	-	-	15%	High performance curtain wall façade system with polyester powder coated framing and integrated brise solei system.	
FS:01:A	Serviced Apartments	West elevation	-	-	8%	-	Modular polyester powder coated aluminium panels.	
FS:01:B	Serviced Apartments	West elevation	-	-	8%	-	Modular polyester powder coated profiled horizontal brise solei system.	
FS:01:C	Serviced Apartments	West elevation	-	-	8%	-	Modular high performance glazing with polyester powder coated aluminium framing system.	
GL:01	Hotel/Imax Entrance	Podium East and West elevations	-	-	8%	15%	High performance frameless glazing system.	
GL:02	Retail	Podium North, North-West	8%	15%	8%	-	Modular high performance glazing system with vertical fins.	
GL:03	Commercial	SHFA 2 West	-	-	8%	-	Clear glazing in standard aluminium framing system finish and color to match modular aluminium paneling system CL:01	
LV:01	Service Areas	South elevation, other podium level plant areas	8%	15%	8%	15%	Modular polyester powder coated aluminium louvres with backing panels colours to match framing.	

* Applies to all glazing and specular cladding materials. Information sourced from "Table 2 - Recommended surface reflectivity" Cundall Reflectivity Study dated 16/12/2015



DRAWING NO.: SK027.1
 DATE: 18 APRIL 2016
 BASED ON: -

DRAWING TITLE: MATERIALS AND FINISHES
 VIEW FROM NORTH-WEST

MATERIALS AND FINISHES VIEW FROM NORTH WEST

Scale
 NTS

Client
 Grocon

Project Name
 The Ribbon Hotel, Serviced
 Apartments and Retail

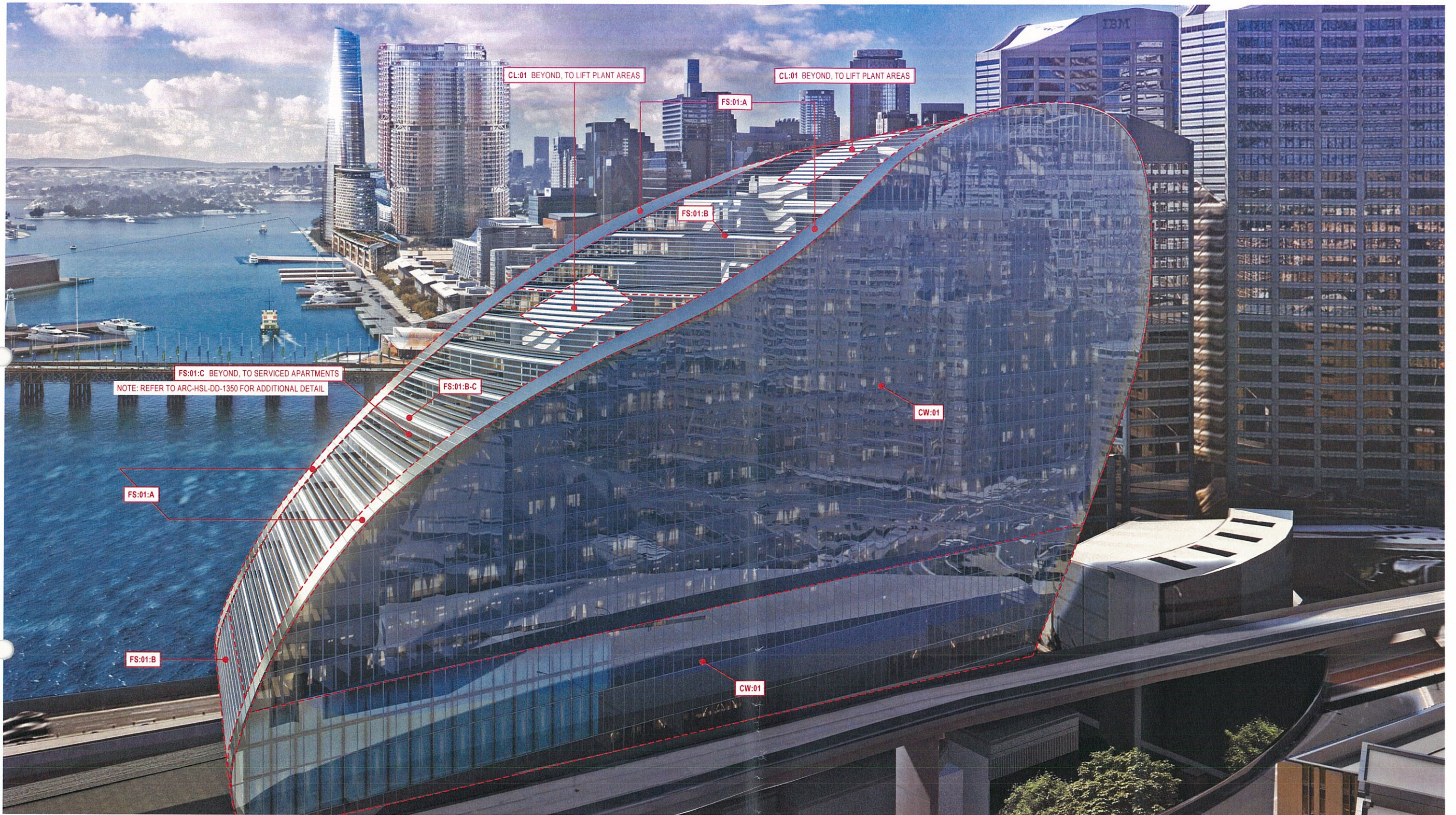
HASSELL

RUSSELL &
 GEORGE

pmdl
 ARCHITECTURE
 INTERIORS
 MASTERPLANNING

ASPECT Studios™

Grocon



DRAWING NO.: SK027.2
 DATE: 18 APRIL 2016
 BASED ON: -

DRAWING TITLE: MATERIALS AND FINISHES
 VIEW FROM SOUTH-WEST

**MATERIALS AND FINISHES
 VIEW FROM SOUTH-WEST**

Scale
 NTS

Client
 Grocon

Project Name
 The Ribbon Hotel, Serviced
 Apartments and Retail

HASSELL

RUSSELL &
 GEORGE

pmdl
 ARCHITECTURE
 INTERIORS
 MASTERPLANNING

ASPECT Studios™

Grocon



DRAWING NO.: SK027.3
 DATE: 18 APRIL 2016
 BASED ON: -

DRAWING TITLE: MATERIALS AND FINISHES
 VIEW FROM SOUTH-EAST

**MATERIALS AND FINISHES
 VIEW FROM SOUTH-EAST**

Scale
 NTS

Client
 Grocon

Project Name
 The Ribbon Hotel, Serviced
 Apartments and Retail

HASSELL

RUSSELL &
 GEORGE

pmdl
ARCHITECTURE
 INTERIORS
 MASTERPLANNING

ASPECT Studios

Grocon



DRAWING NO.: SK027.4
 DATE: 18 APRIL 2016
 BASED ON: -

DRAWING TITLE: MATERIALS AND FINISHES
 VIEW FROM NORTH

**MATERIALS AND FINISHES
 VIEW FROM NORTH**

Scale
 NTS

Client
 Grocon

Project Name
 The Ribbon Hotel, Serviced
 Apartments and Retail

HASSELL

RUSSELL &
 GEORGE

pmdl
 ARCHITECTURE
 INTERIORS
 MASTERPLANNING

ASPECT Studios™

Grocon